

How to use Chrysler wiTech MicroPod 2 Diagnostic Programming Tool ?

Notice: Please dont connect the network when use it , or the hard disk will be damaged cant working !!!

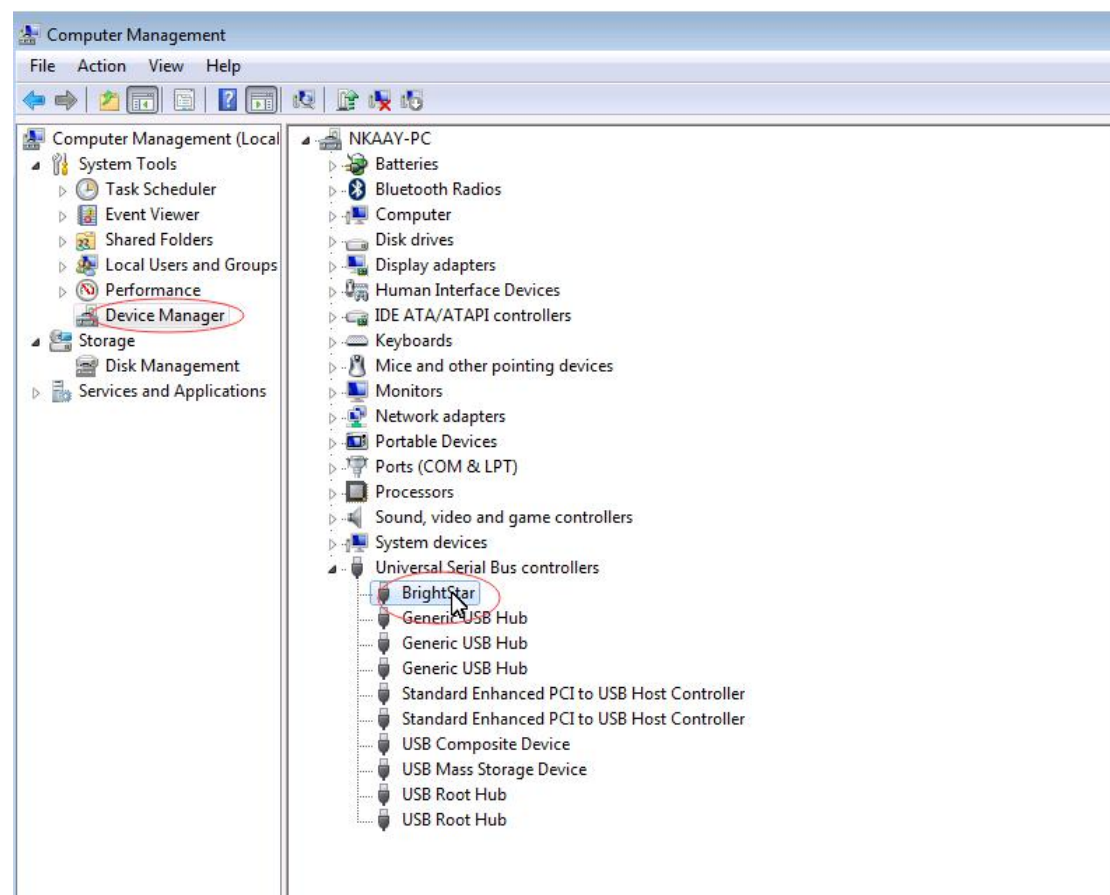
1. Connect the hard disk with your laptop , start your laptop (Please dont connect the network)

2. If cant find the hard disk , or with blue screen , please enter into the BIOS system , make a select for SATA MODE to AHCI , then restart your laptop again .

3. Please set up the date of your laptop to 2017.01.01 !!!

4. Connect Chrysler wiTech MicroPod 2 USB Port with PC, OBD2 Port connect with car. The computer will automatically install Chrysler wiTech MicroPod 2 hardware driver

4 After Drive installed, you can find your device in your computer device manager



5 . Double click the icon of Chrysler wiTech MicroPod 2

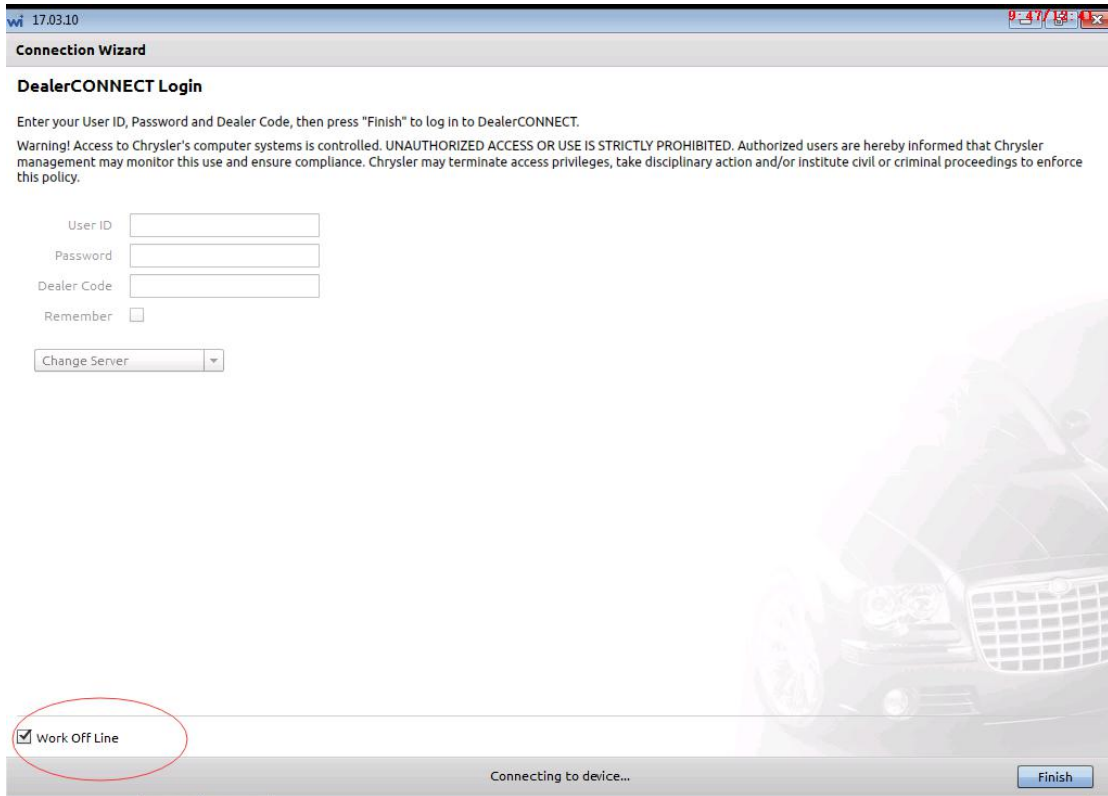


6 .You will see Chrysler wiTech MicroPod 2 connected with software, Please click " next"

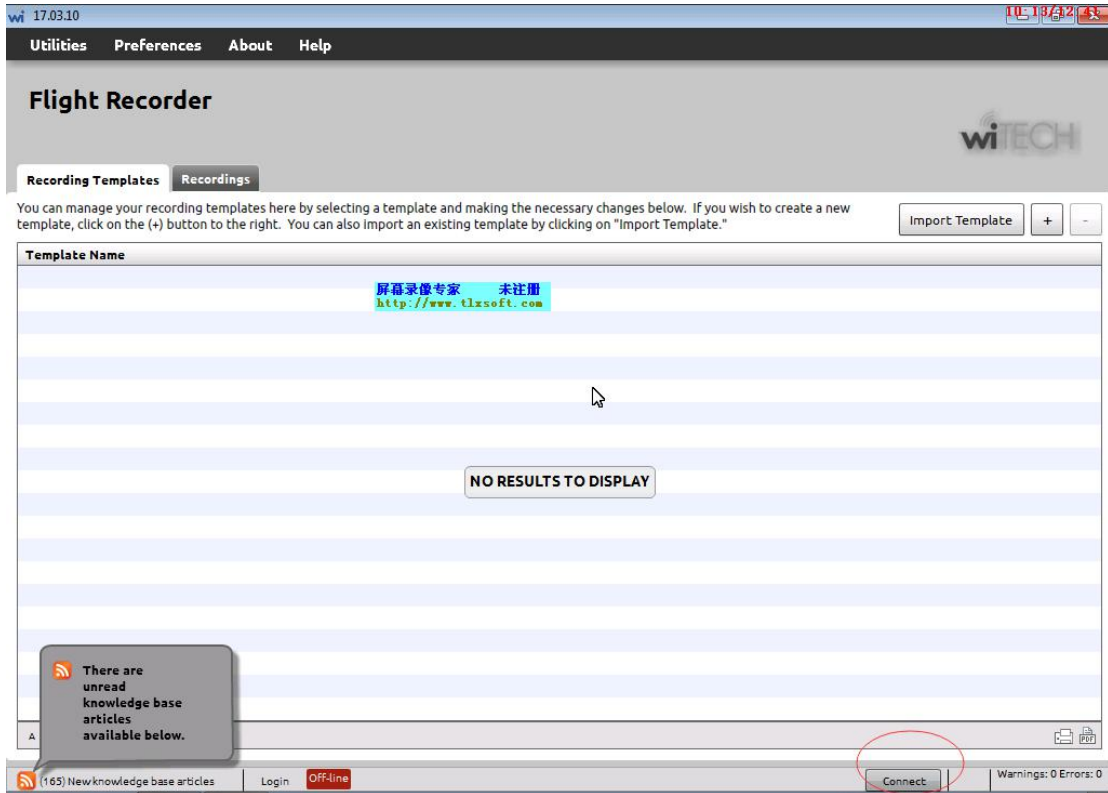
The screenshot shows the "Connection Wizard" window. At the top, it says "wi 17.03.10" and "9:32/19". Below the title bar, it says "Connection Wizard". Underneath, it says "Select Tool". Below that, it says "Double-click row or select tool and press 'Next'. List refreshes automatically as tools are added or removed." There is a checkbox labeled "Hide Unresponsive Devices". Below this is a table with the following columns: Device, Year, Body, IP Address, Workgroup, Interface, Locked, and Lock Owner. The first row is highlighted in blue and contains the following data: Device: RDM-WMP-00000, Year: ????, Body: ??, IP Address: 172.22.22.22, Workgroup: (empty), Interface: usb, Locked: (empty), Lock Owner: (empty). Below the table, there is a checkbox labeled "Work in standalone mode" and a button labeled "Modify Location Profiles". At the bottom right, there is a button labeled "Next".

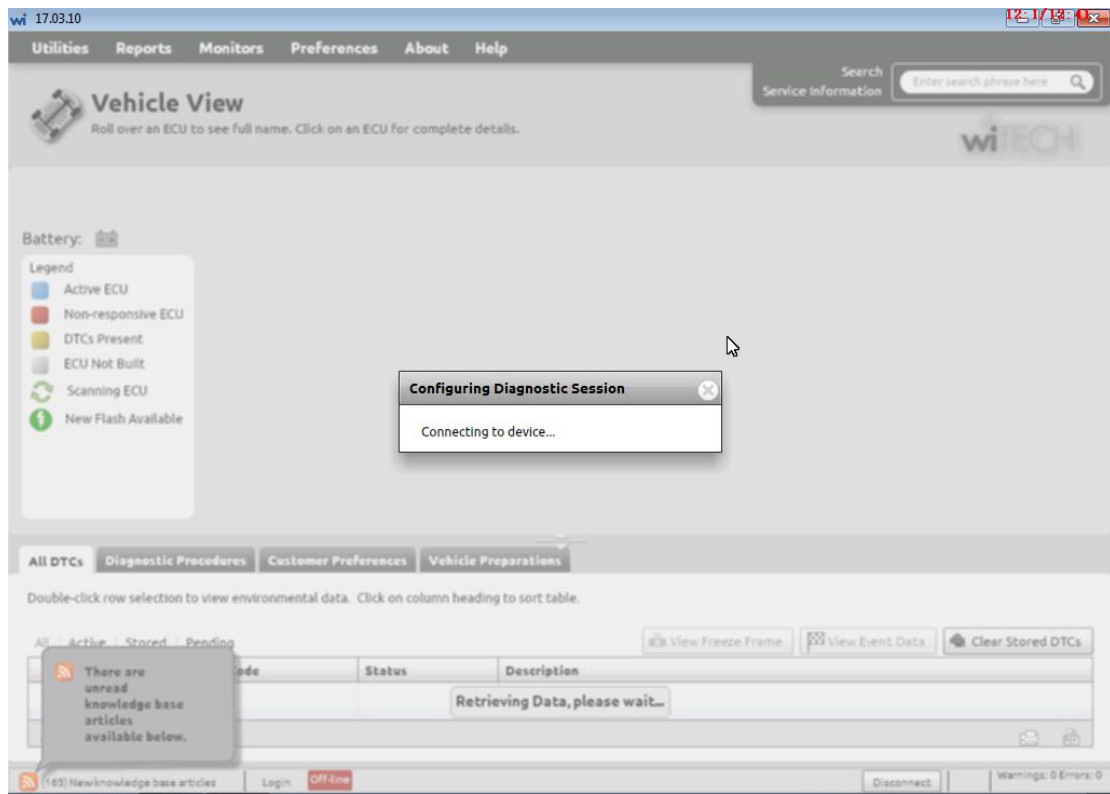
Device	Year	Body	IP Address	Workgroup	Interface	Locked	Lock Owner
RDM-WMP-00000	????	??	172.22.22.22		usb		

7. please select "word off line", Then click "finish" and go to next step



8. Select " Connect"





9. To this step, you can choose the type of car which you want to test the system