
Honda Key Programmer

Brief Introduction

1. Functions

The device is for registering key by OBDII. Cover all Honda/Acura equipped with OBDII-16 socket. Support both transponder key and smart key registration in the following scenarios:

- a) Add key
- b) All keys lost
- c) Replace IMMOBI
- d) Replace ECM/PCM
- e) Replace MPCS/MICU/IMOES
- f) Replace smart entry
- g) Replace key knob
- h) Remote learning

2. Highlights

- a) Easy to use. Register keys full automatically. User just turns ignition ON/OFF.
- b) Register keys fast. Finish registration in minutes.
- c) Small package and easy to carry. Can be hold in one hand.

3. Technical Specifications

- a) Voltage & Current Requirements

8V – 18V DC (12V nominal) at 4 Amps (maximum)

b) Vehicle Protocols

- DIAGH
- CAN
- ISO-9141
- ISO-14230

c) Vehicle Connection

Molded DLC

d) Dimensions

H:22mm (0.87in) W:54mm (2.13in) L:76mm (2.99in)

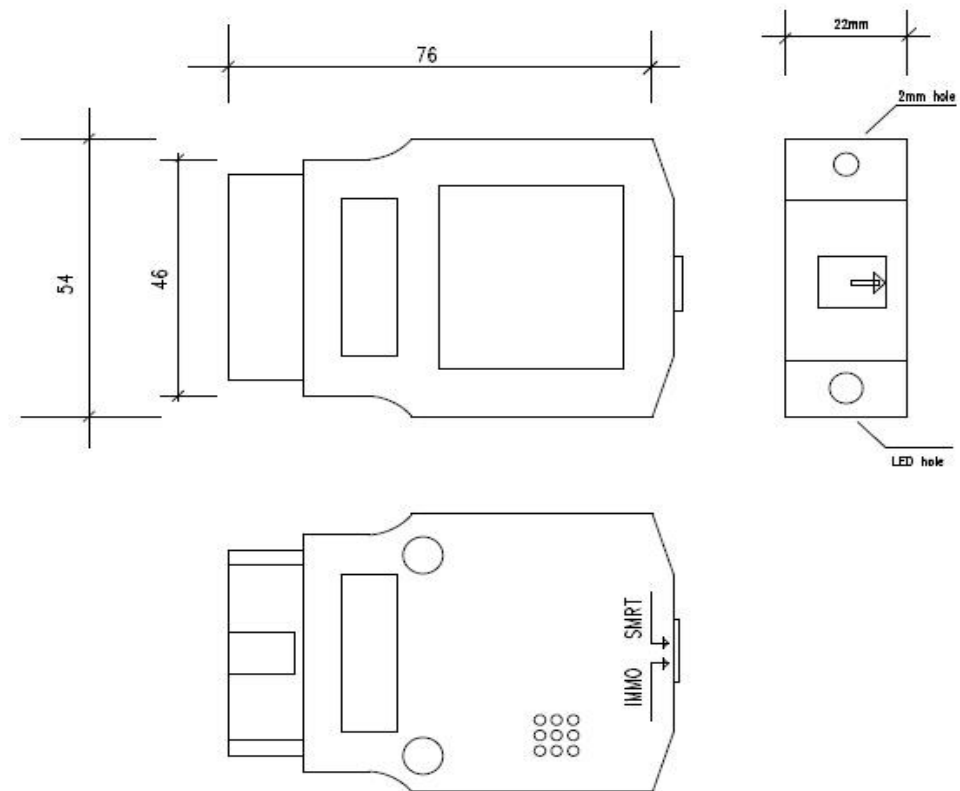
e) Weight

50g (1.76oz)

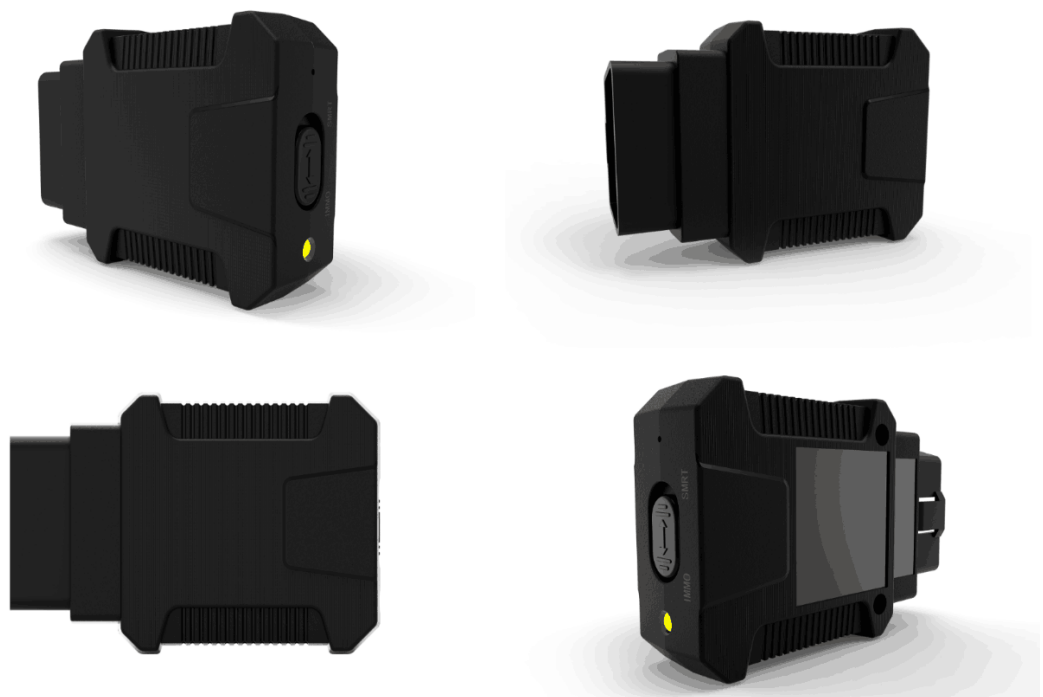
f) Environmental

Operating: -20°C to 45°C (-4°F to 113°F) at 15% to 85% RH
non-condensing

4. Appearance Detail



Picture 1 Sketches view



Picture 2 3D view

a) Key Type Switch

IMMO: Transponder key

SMRT: Smart key

b) LED Status Indicators

ON: Power ON

OFF: Power OFF

c) Buzzer

- Long beep once "Di---" (Beep ON continuous for 3 seconds)
- Long beep periodically with "Di---"(Beep ON for 1 second and OFF for 1 second, and repeat)
- Short beep periodically with "Di" (Beep ON for 100 milliseconds, OFF for 900 milliseconds, and repeat)
- Short beep periodically with "Di, Di" (Beep ON for 100 milliseconds, OFF for 100 milliseconds, ON for 100 milliseconds, OFF for 700 milliseconds, and repeat)
- Short beep periodically with " Di, Di, Di" (Beep ON for 100 milliseconds, OFF for 100 milliseconds, ON for 100 milliseconds, OFF for 100 milliseconds, ON for 100 milliseconds, OFF for 500 milliseconds, and repeat)