

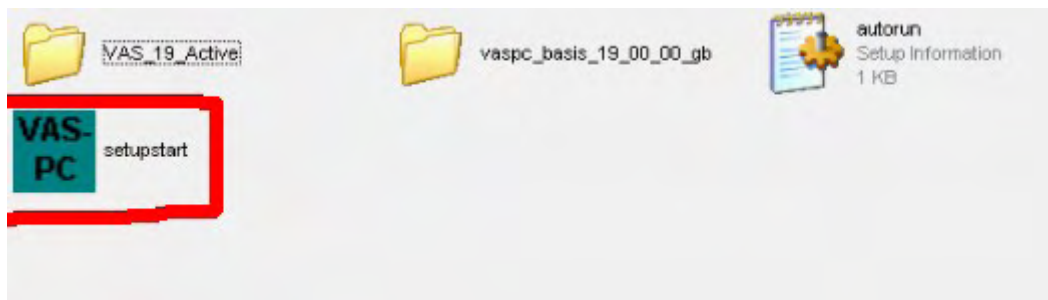
5054A-v19 setup instruction English

Computer System Requirements:

- 1) Language: English
- 2) Windows XP(xp2/xp3)
- 3) System C:// have to be NTFS format
- 4) C:// need to have at least 5GB space for installing VAS5054A

VAS5054A V19 setup steps

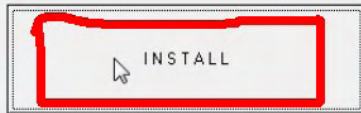
step 1: put 5054a-basis CD into computer, then select “setupstart”



Step 2: Enter VAS5054A installation interface,select “INSTALL”

VAS-PC Car Diagnostic System Installation

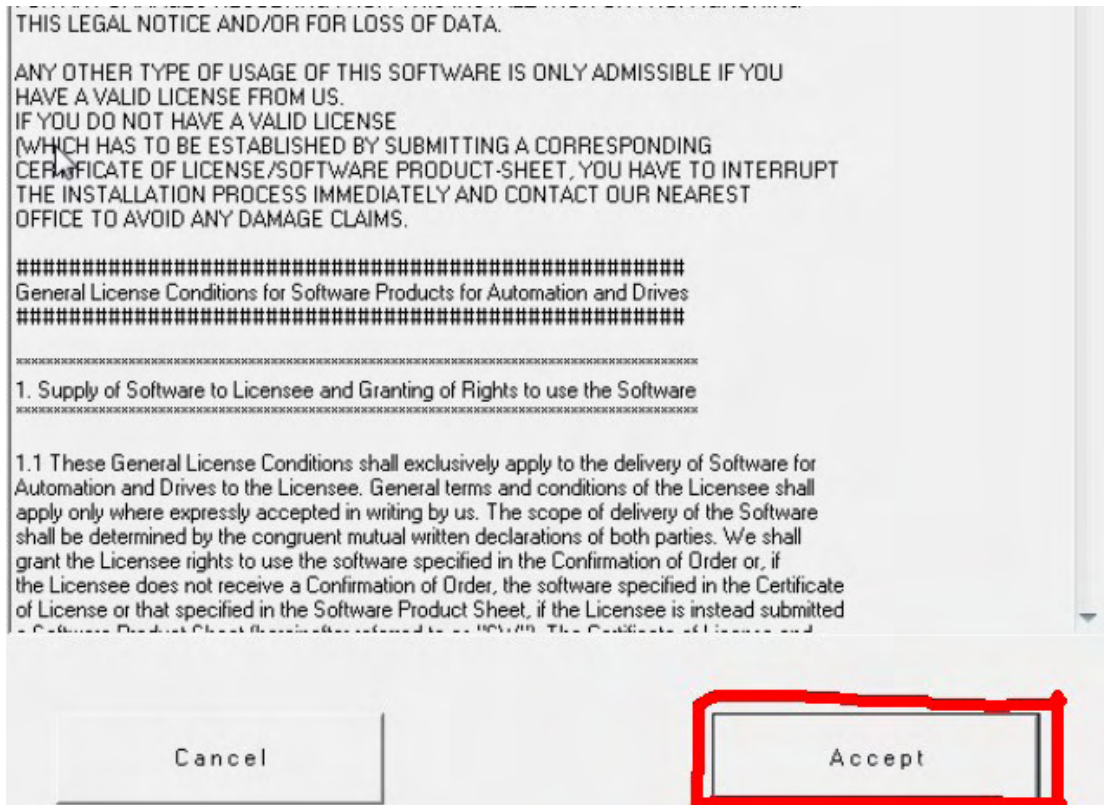
Version: V19.00.00



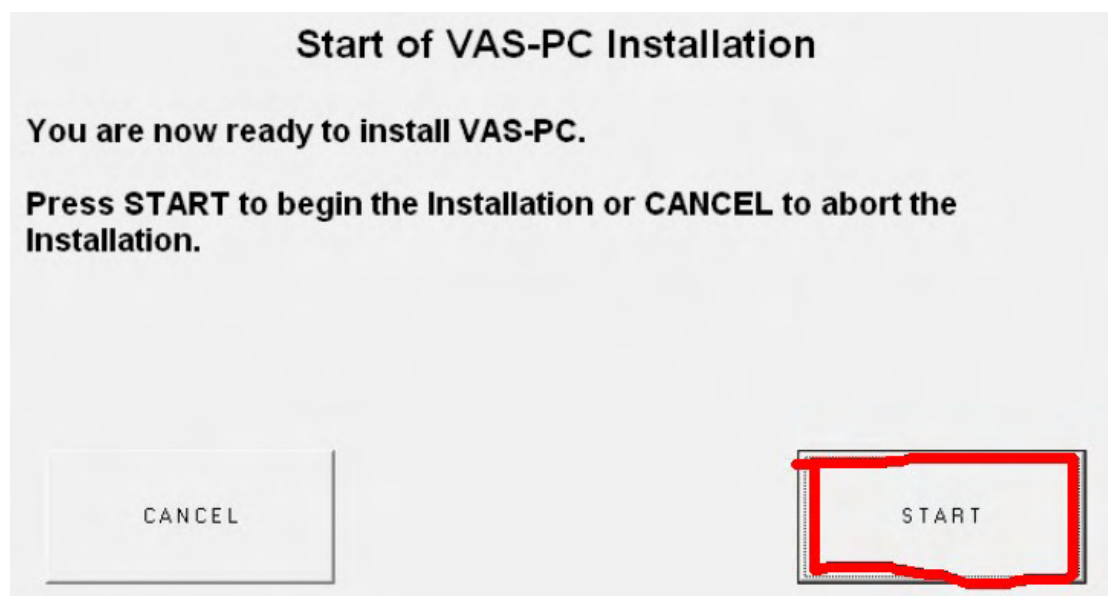
UNINSTALL

EXIT

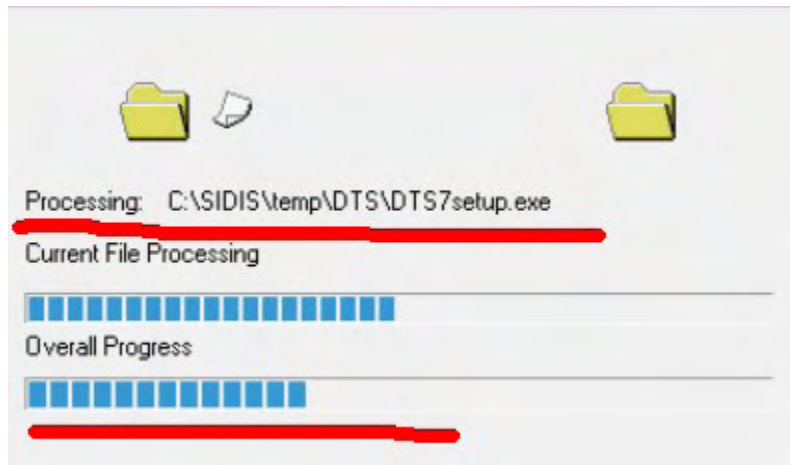
Step 3: click “Accept”



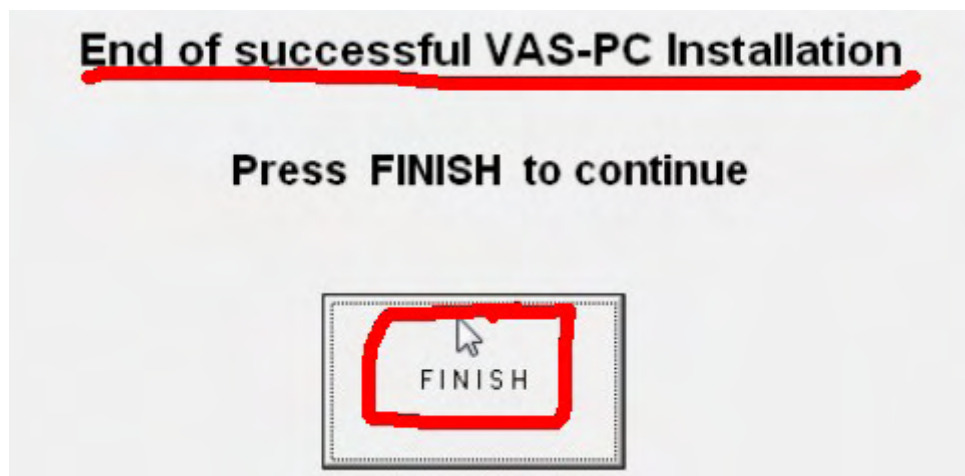
Step 4: click "START"



Step 5: installing software, please wait patiently



Step 6: end software installation, click “**FINISH**”



Step 7: Click “**EXIT**”

VAS-PC Car Diagnostic System Installation

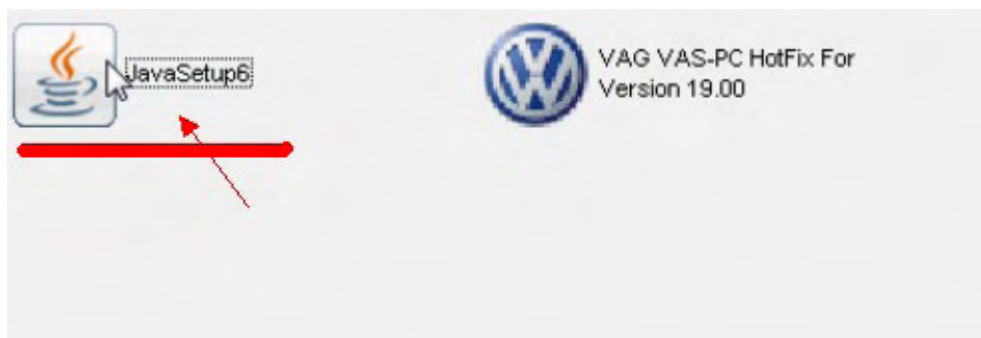
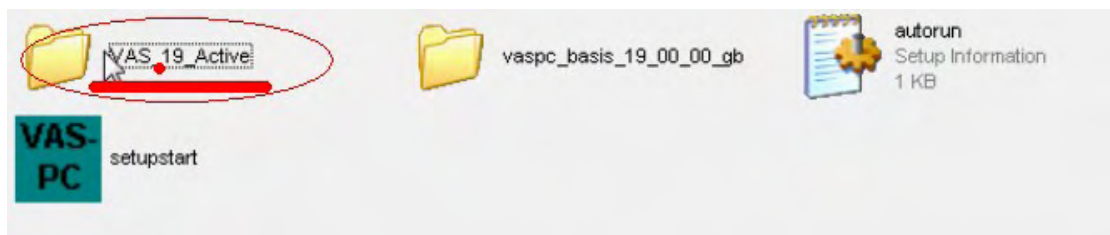
Version: V19.00.00

INSTALL

UNINSTALL

EXIT

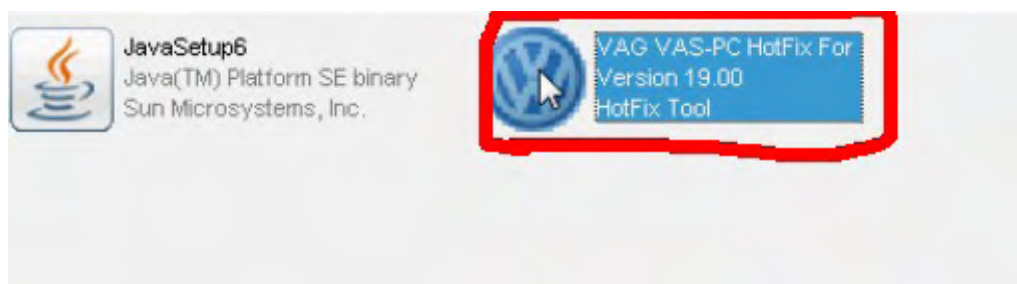
Step 8: Open C:// and Click “**VAS_19_Active**” to install java.



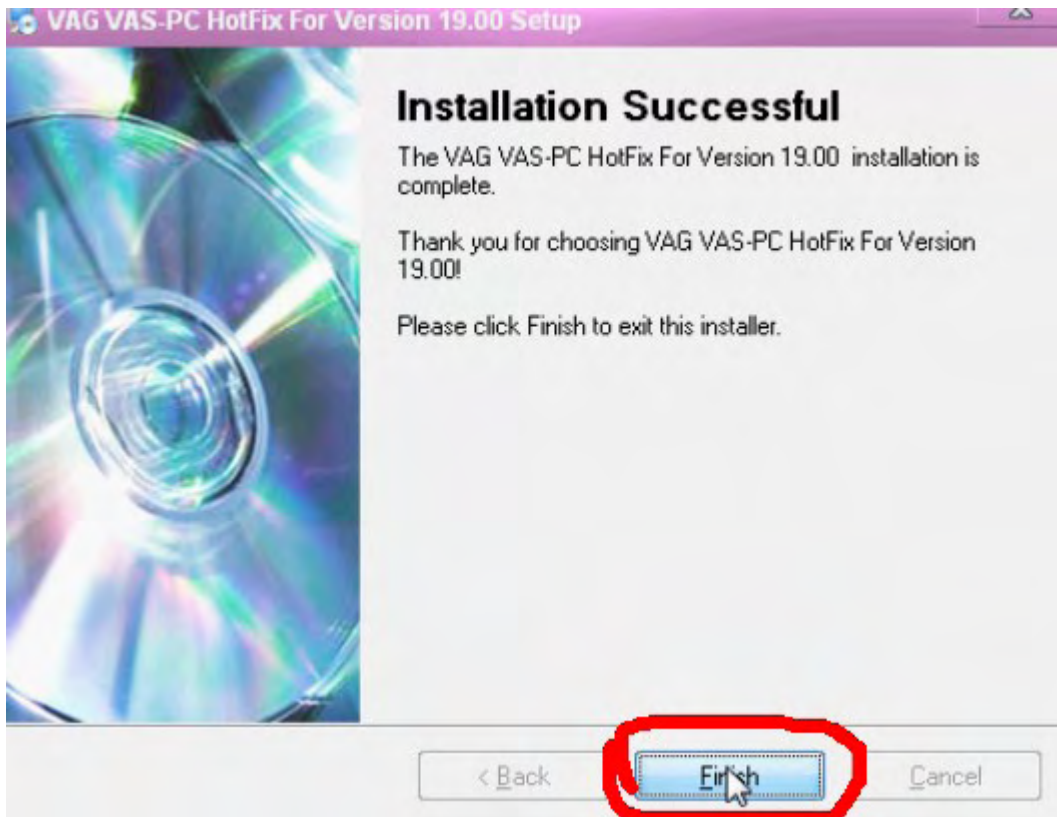
Step 9: Finish installing Java



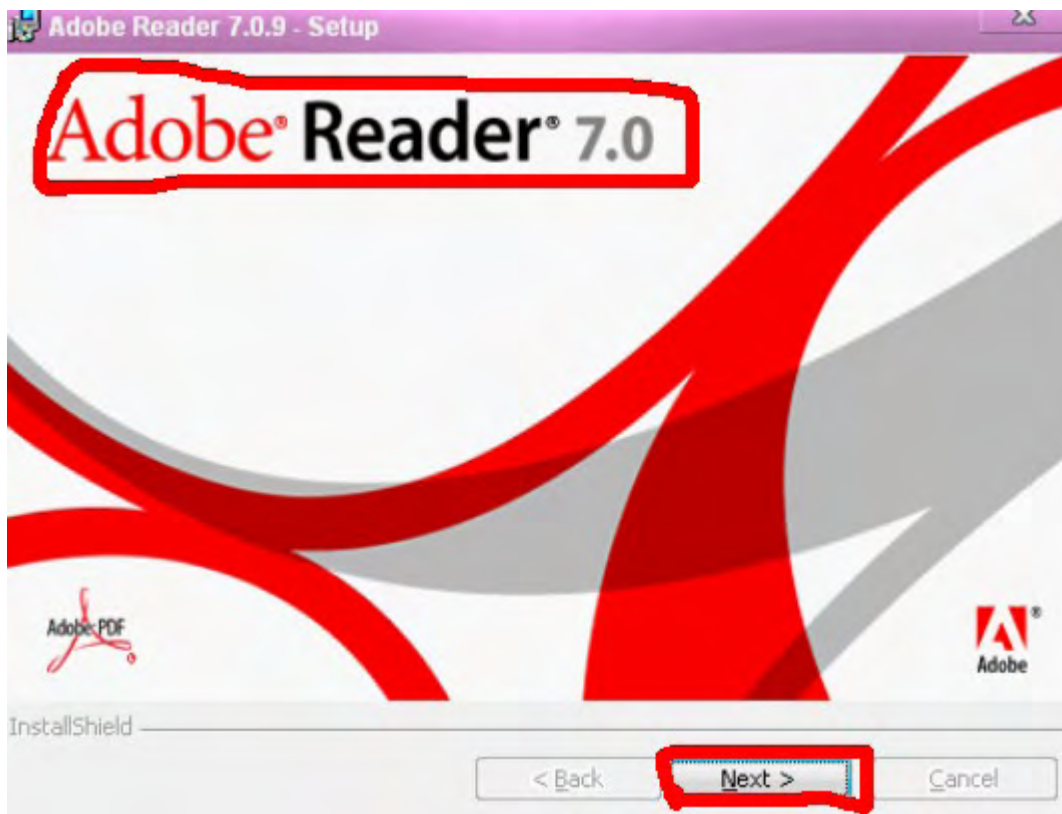
Step 10: click “VAG VAS-PC Hotfix for Version 19.00 HotFix Tool”



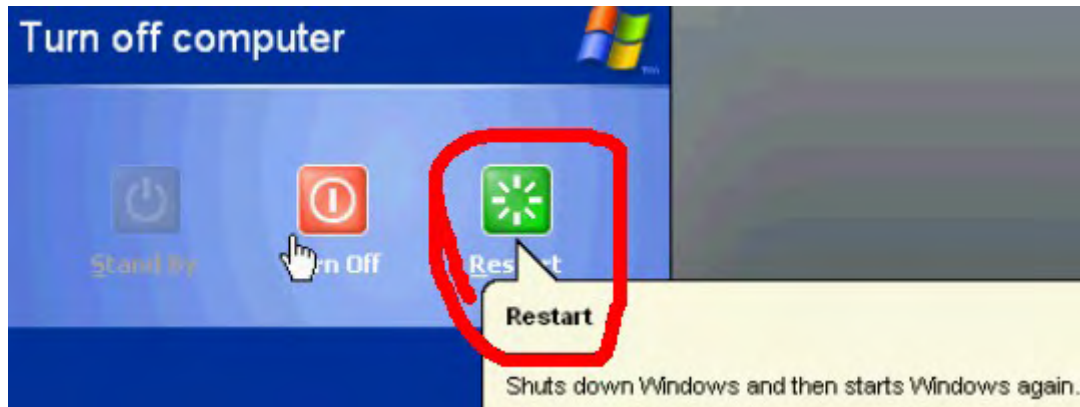
Step 11: Installation Successful, click “Finish”



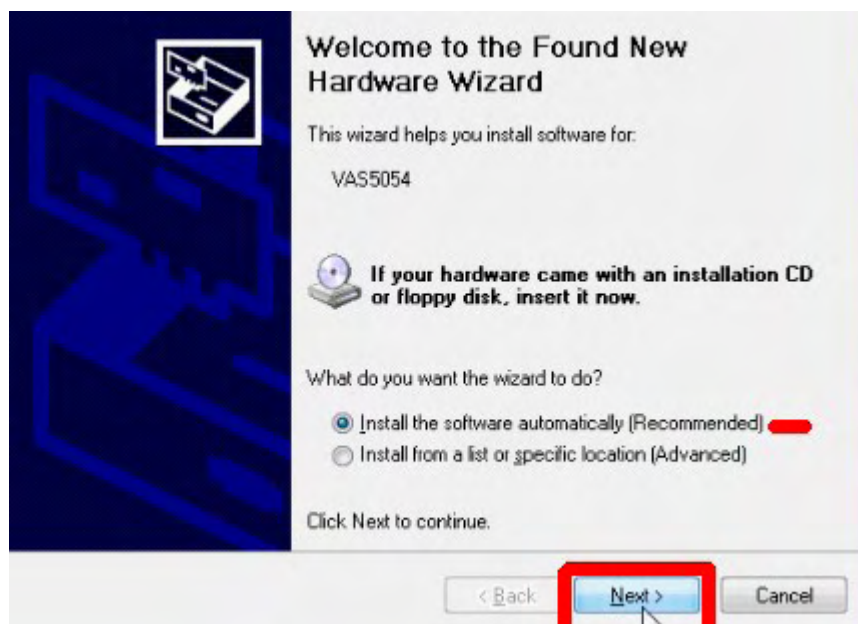
Step 12: Download and install “Adobe Reader 7.0.9”



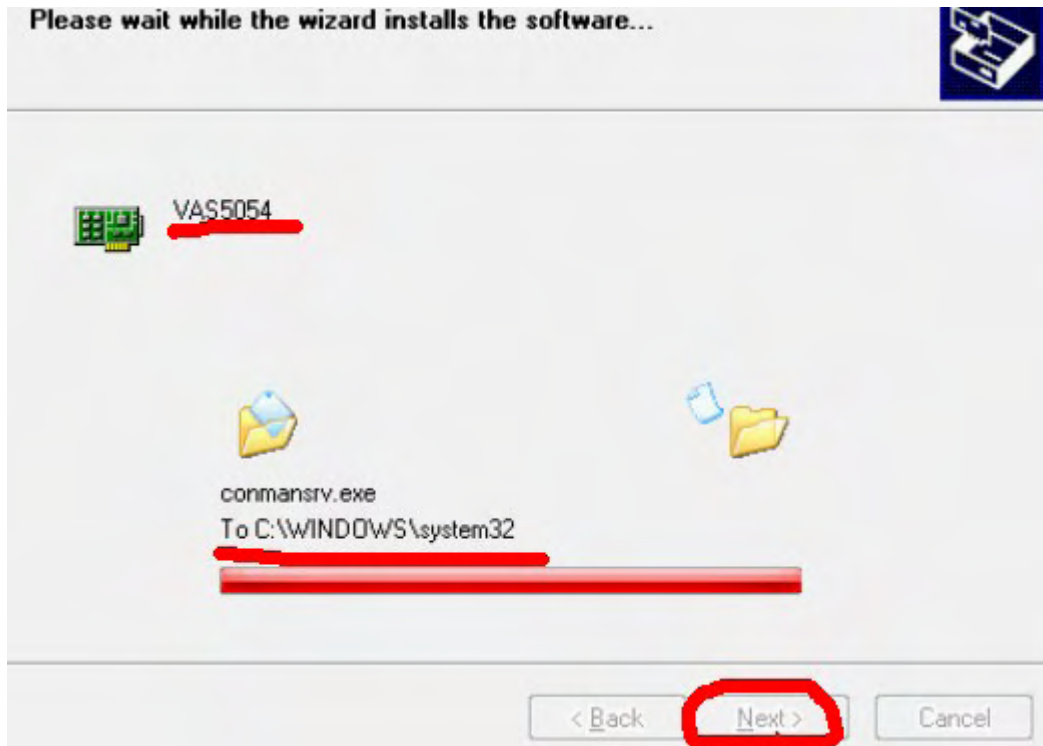
Step 13: Now **restart computer (have to restart)**, to save VAS5054A installation settings.



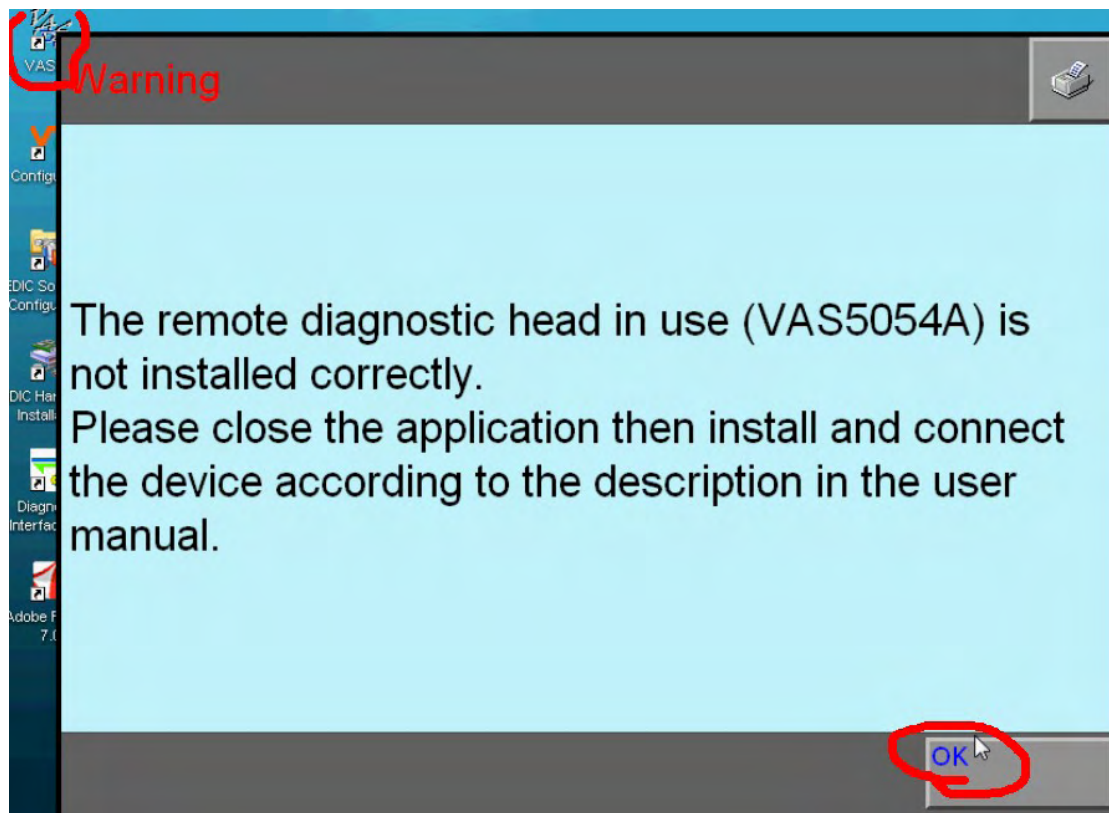
Step 14: after restart computer, connect VAS5054A to car and with computer, then start to install driver.



Step 14: Driver installation finish



Step 15: open “VAS-PC” on your computer desktop, when the dialog box named “Warning” open, click “ok”



Step 16: Now enter VAS5054A V19 software, begin to set “administration”

VAS PC

Vehicle diagnostic, measuring and information system
Version -GB- / V19.00.00 04/05/2011



Step 17: Click “Enter Workshop Code”

| | |
|----------------------------------|--------------------------|
| Administration | Equipment Number: 999999 |
| Select function | |
| Install/Update CD | |
| Net Update | |
| Self-test | |
| Enter workshop code | |
| Signal Generator | |
| Date/Time | |
| Expanded Functions | |
| Select Initial Graphic | |
| Contents | |
| Display User Documentation | |
| Application Statistic | |
| Dimension Pressure / Temperature | |
| Network Settings | |
| Exporting Function Test Files | |

Step 18:

Importer Number consists of three digits

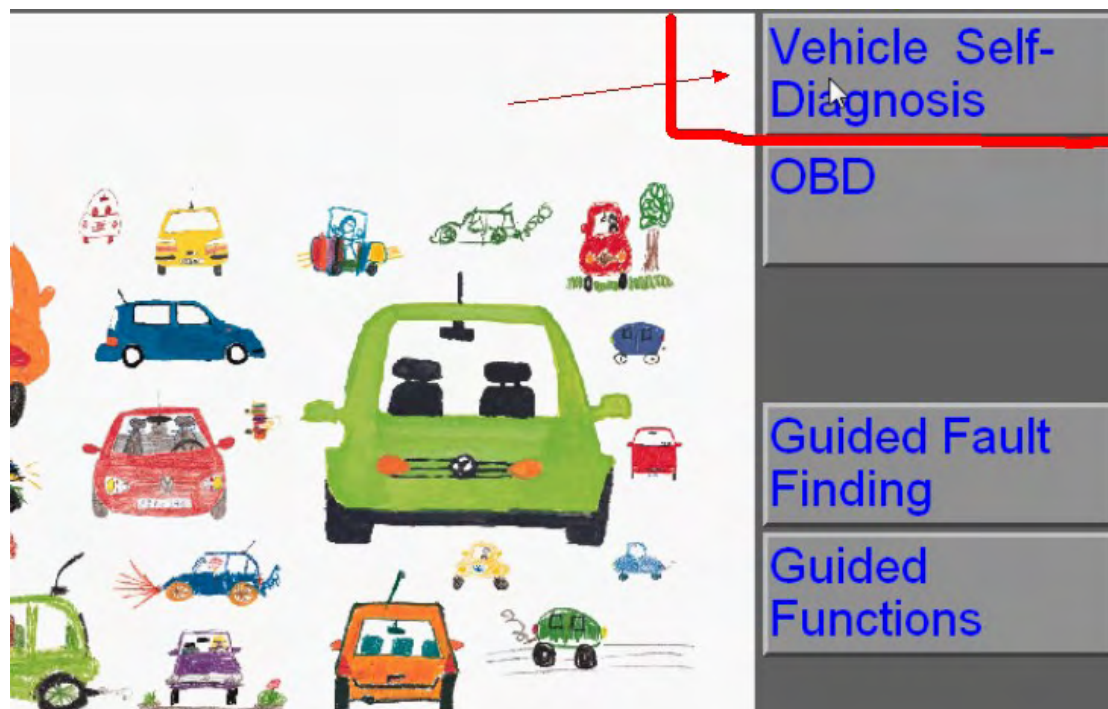
Dealership Number consists of five digits

The third group code consists of two lines, **no more than 60 characters**

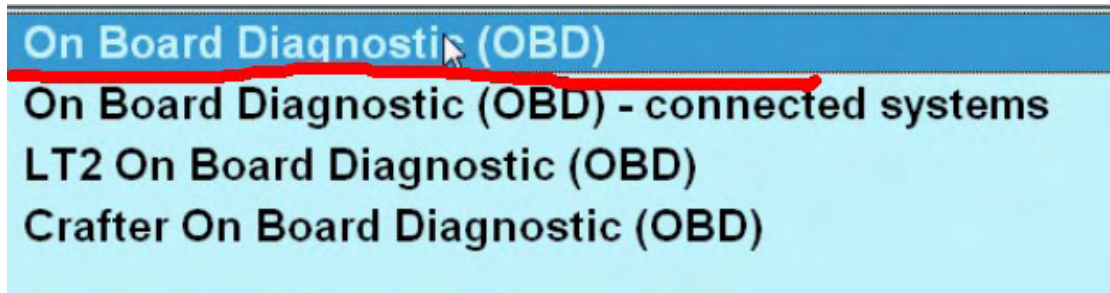
| | |
|------------------------------|---------------------------|
| Administration | Equipment Number: 999999 |
| | Importer Number: 326 |
| Select function | Dealership Number : 78654 |
| | 654362 |
| | 8uuyui97 |
| Install/Update CD | |
| Net Update | |
| Self-test | |
| Change Dealership Identifier | |
| Signal Generator | |
| Date/Time | |
| Expanded Functions | |
| Select Initial Graphic | |
| Contents | |
| Display User Documentation | |
| Application Statistic | |

After finish setup “**administration**”, exit it, you will see **operation menu**.

Step 19: Click “Vehicle self-diagnosis”



Step 20: Click “On Board Diagnosis OBD”



Step 21: enter vehicle “VIN”

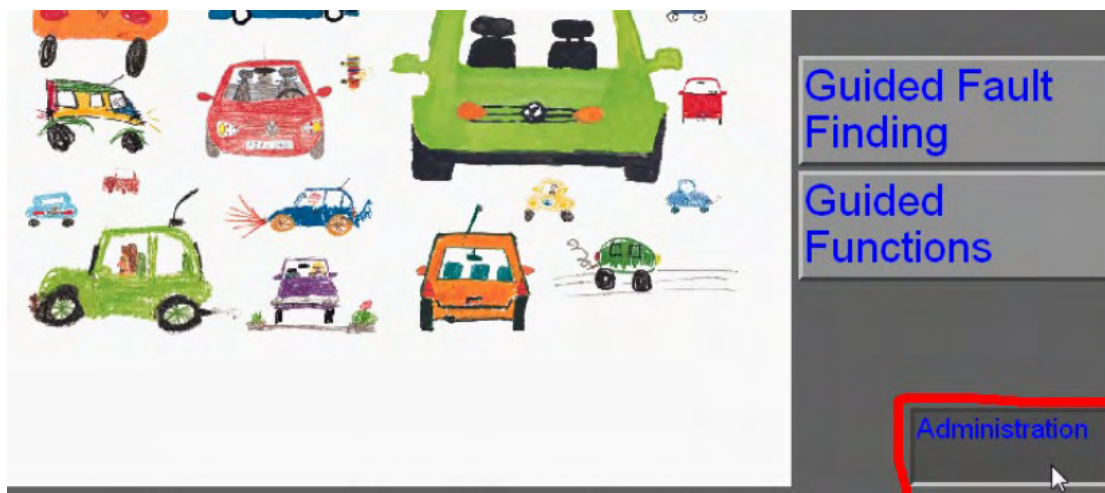
A screenshot of a form for entering vehicle information. The "Vehicle Identification Number (VIN)" field contains "LSVCR49F73226795" and is circled in red. The "License plate" field contains "888" and is also circled in red. Below the fields is a numeric keypad with letters Q-Z and a hyphen. At the bottom, there are three buttons: "Read", "OK" (circled in red), and "Cancel".

| | | | | | | | | | | |
|---|---|---|---|---|---|---|---|---|---|---|
| 1 | 2 | 3 | 4 | 5 | 6 | 7 | 8 | 9 | 0 | |
| Q | W | E | R | T | Z | U | I | O | P | ↑ |
| A | S | D | F | G | H | J | K | L | - | |
| ← | Y | X | C | V | B | N | M | | ↵ | |

Step 22: Now you are able to check **all Vehicle Systems**.
Click **any Control Unit** you want to check.

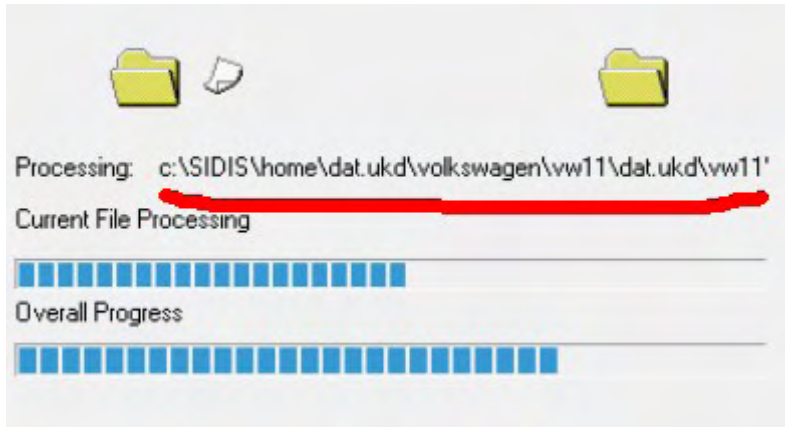
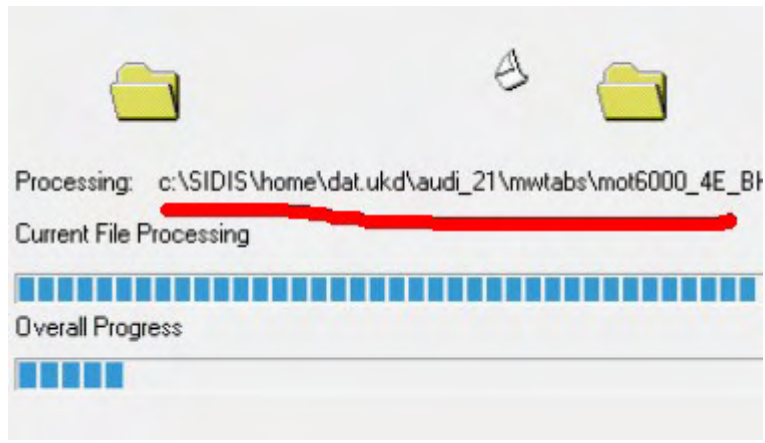
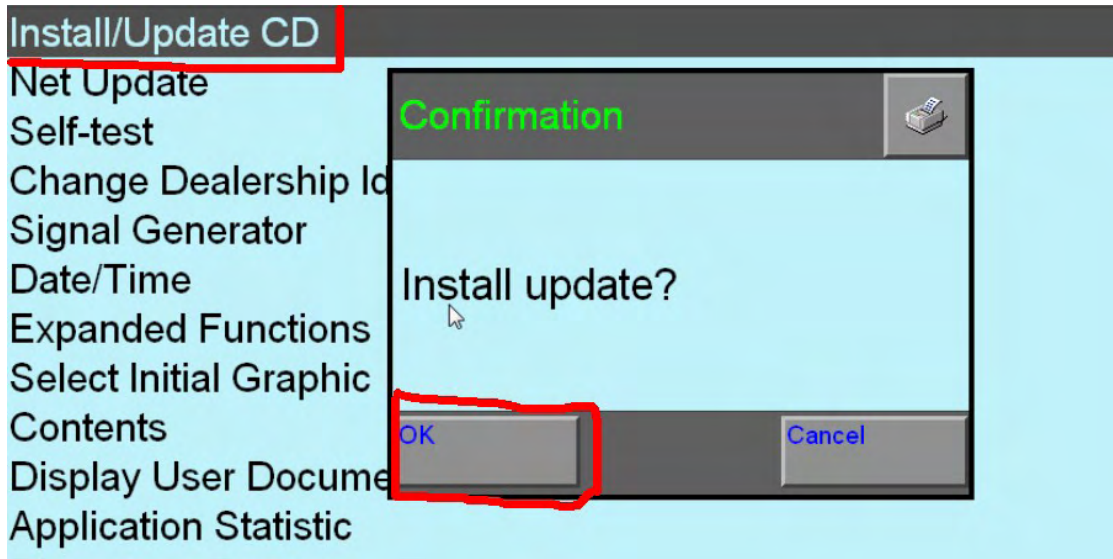
| Vehicle system |
|---|
| 1001 - Compiling services |
| 01 - Engine electronics |
| 02 - Gearbox electronics |
| 03 - Brake electronics |
| 04 - Steering angle sensor |
| 05 - Access and start authorization |
| 06 - Passenger side seat adjustment |
| 07 - Operating-/ display unit |
| 08 - Air conditioner/heater electronics |
| 09 - Electronic central electronics |
| 0B - Auxiliary air heater |
| 0D - Sliding door left |
| 0E - Media player position 1 |

Step 23: begin to update Audi data, firstly insert Audi CD, and click “administration”



Step 24: click “Install/Update CD”, then click “OK”

Note: use the same way to update VW data



Step 25: after update the data of VW and Audi, you will see their **LOGO** as following shows. Now you are able

to use **Guide Function**.

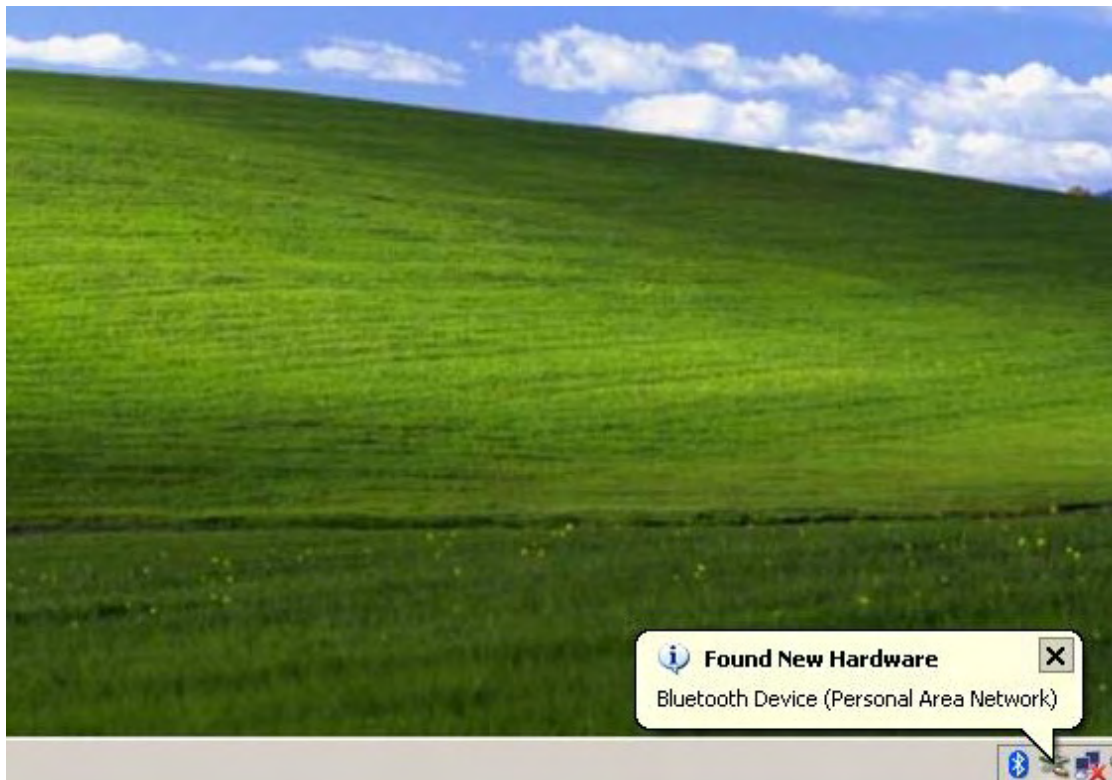
VAS PC

Vehicle diagnostic, measuring and information system
Version -GB- / V19.00.00 04/05/2011

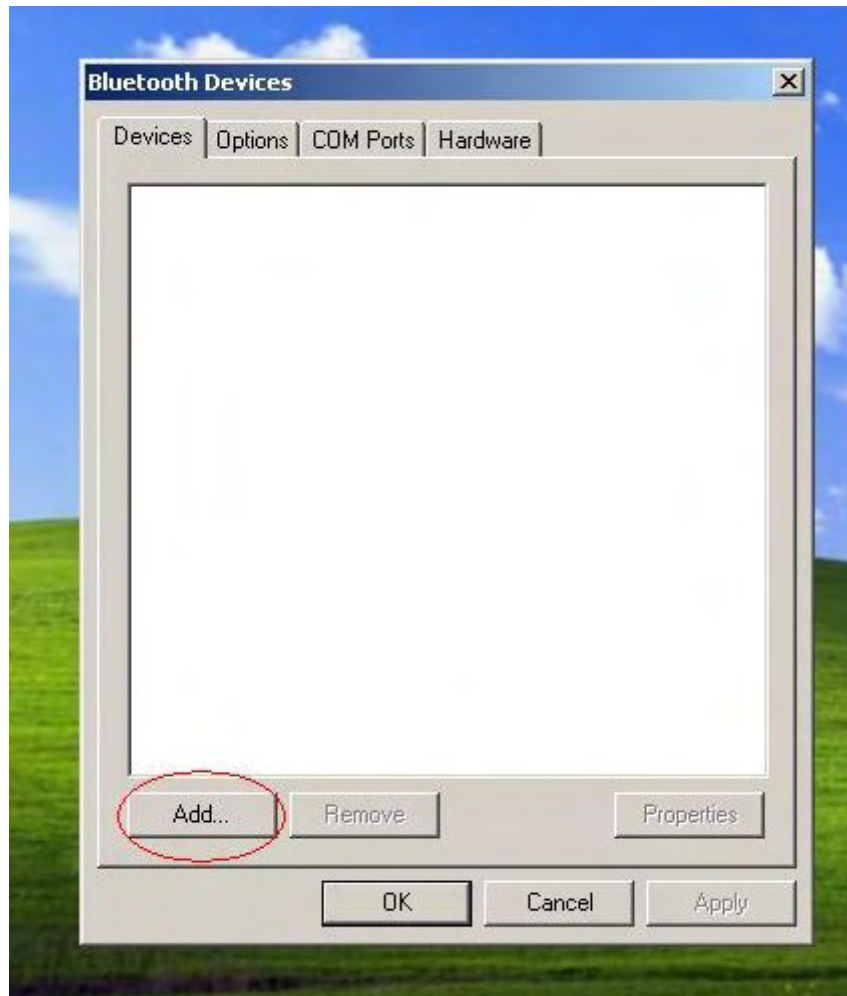


Step 26: Set Bluetooth Device

Firstly put **Bluetooth Device into computer USB port**, then the right corner of computer desktop will appear **“Found New Hardware”**.



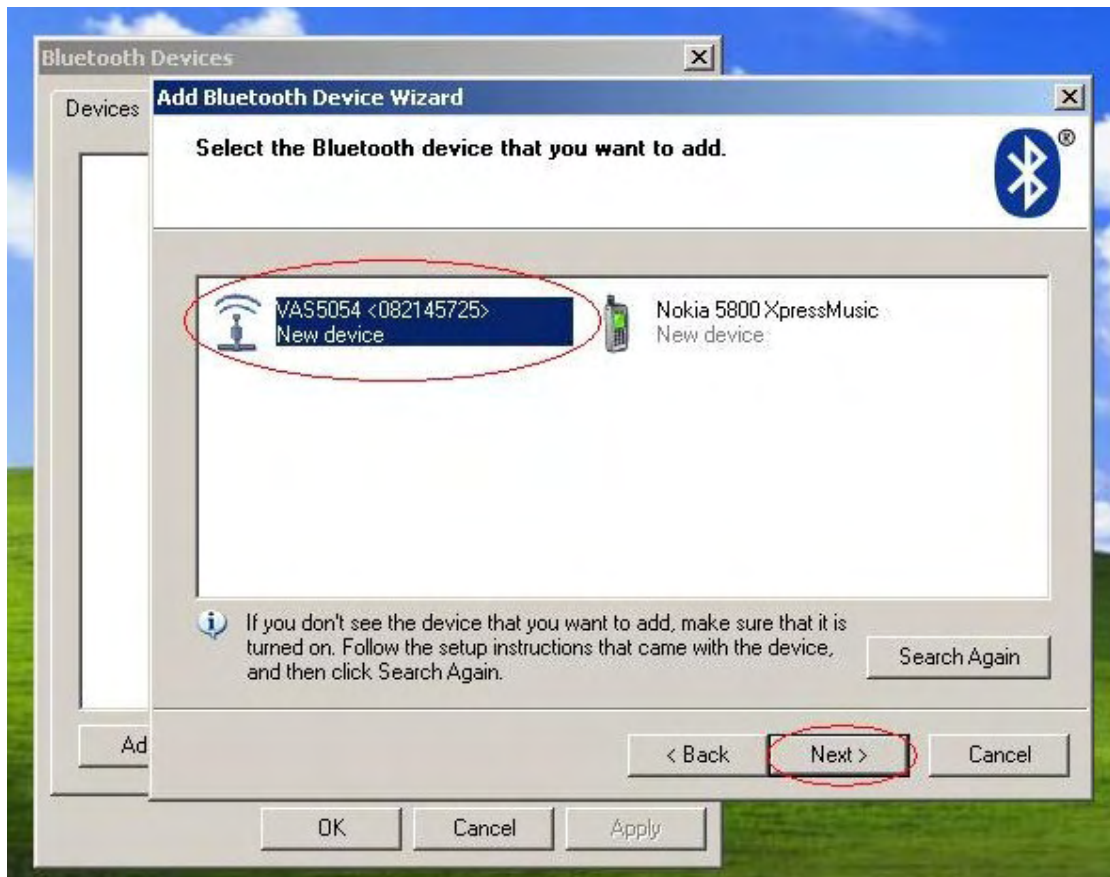
Step 27: double click the Bluetooth Icon at the right corner of your computer desktop. Then a dialog box appears as follows, then **click “Add”**.



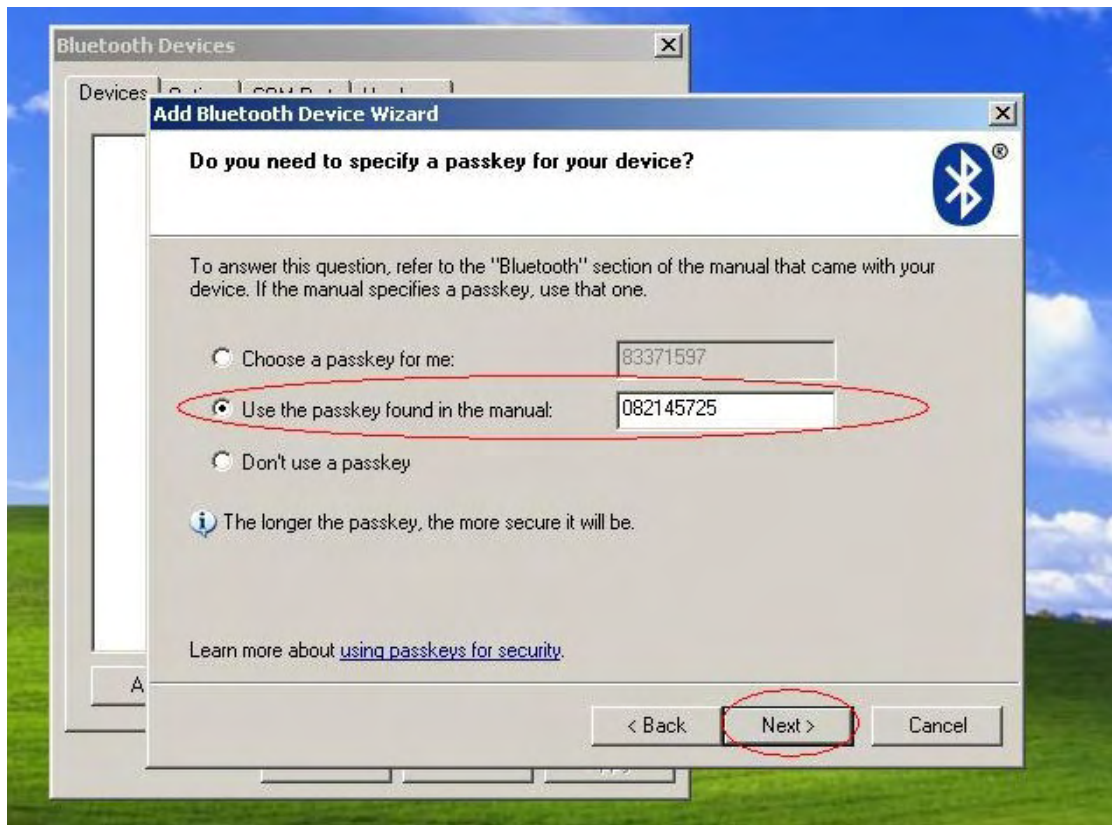
Step 28: follow the suggestion, **click “Next”**



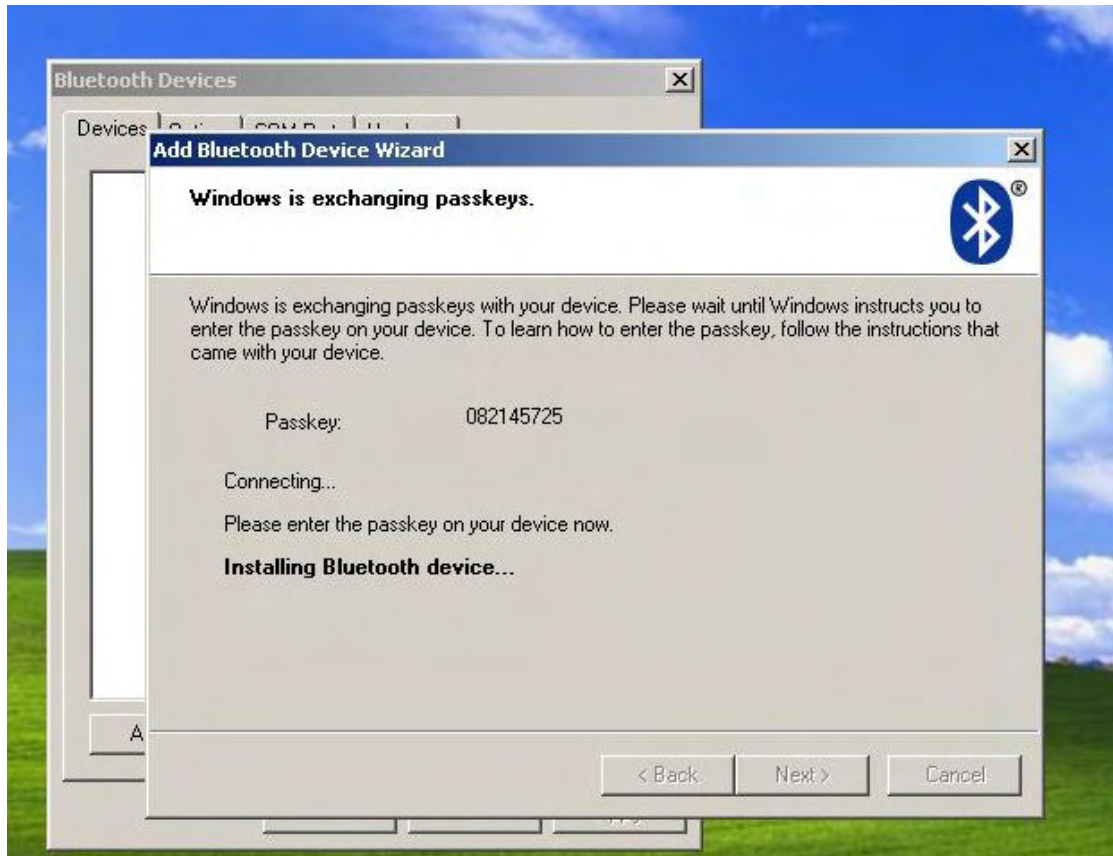
Step 29: After search the Bluetooth Device, we select “VAS5054” and click “Next”



Step 30: choose **“Use the passkey found in the manual”**
and enter **Bluetooth password**, finally click **“Next”**



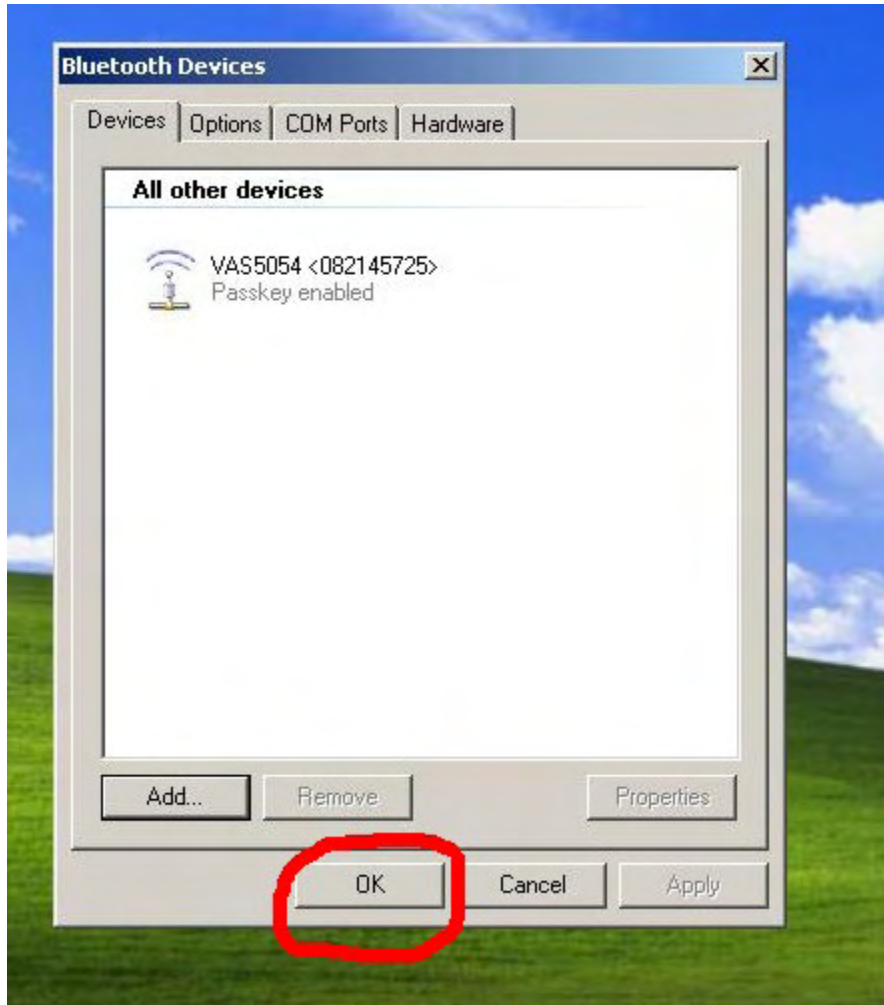
Step 31: Adding Bluetooth, please wait....



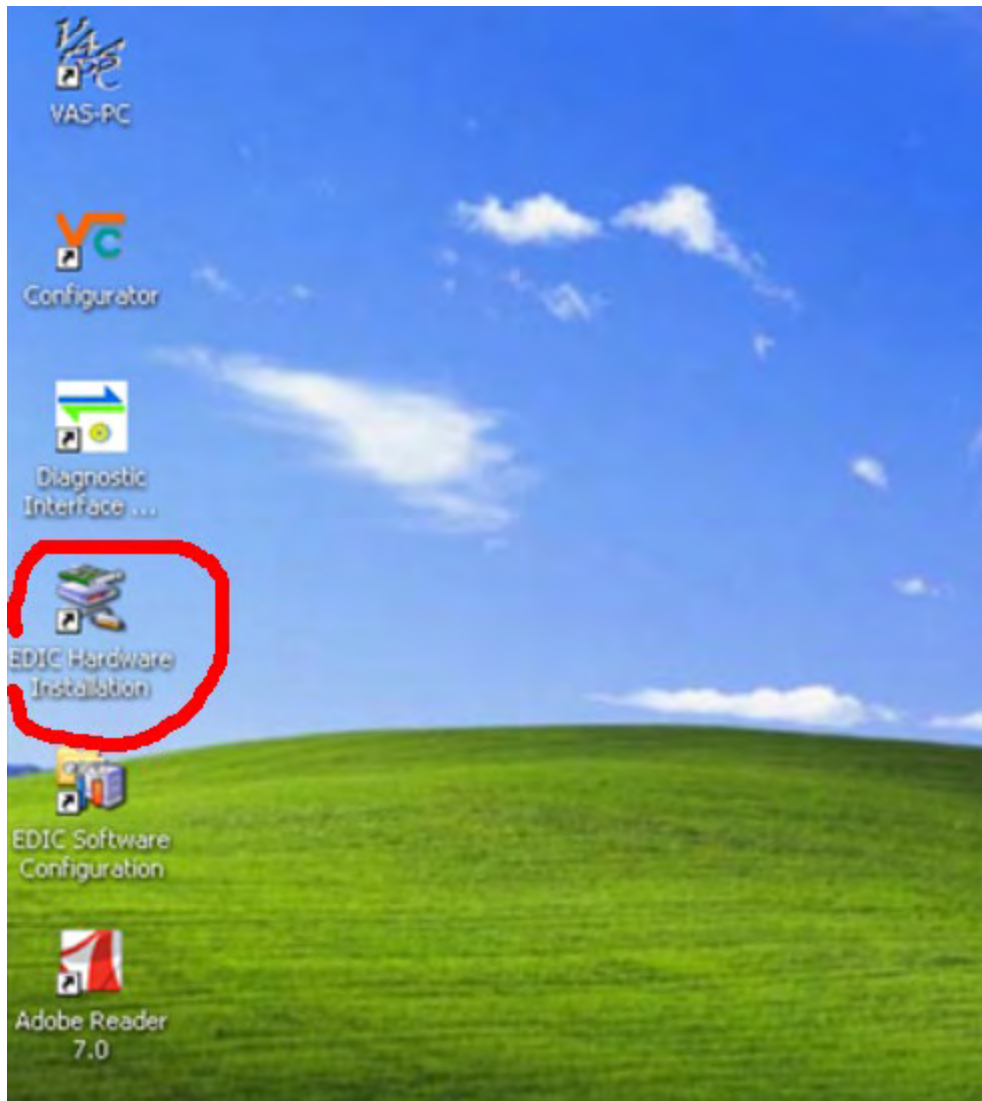
Step 32: Adding Bluetooth successfully, Outgoing COM port must be **com4**



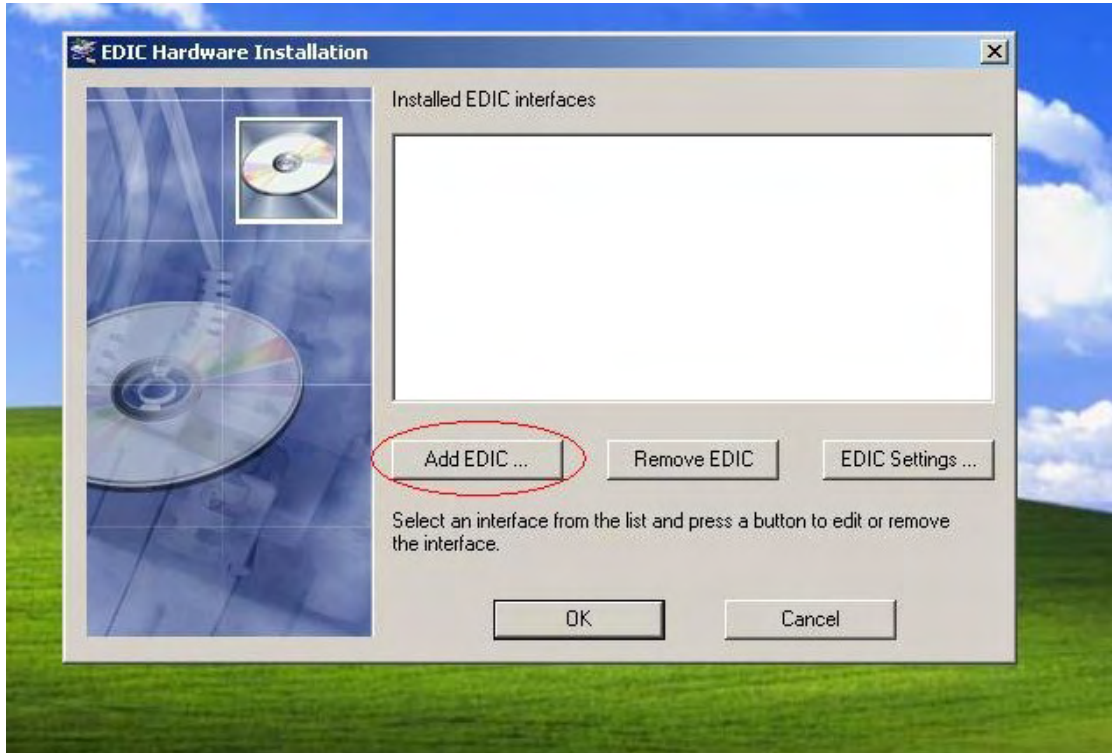
Step 33: Bluetooth Device can work well, **click “OK”** to close this window



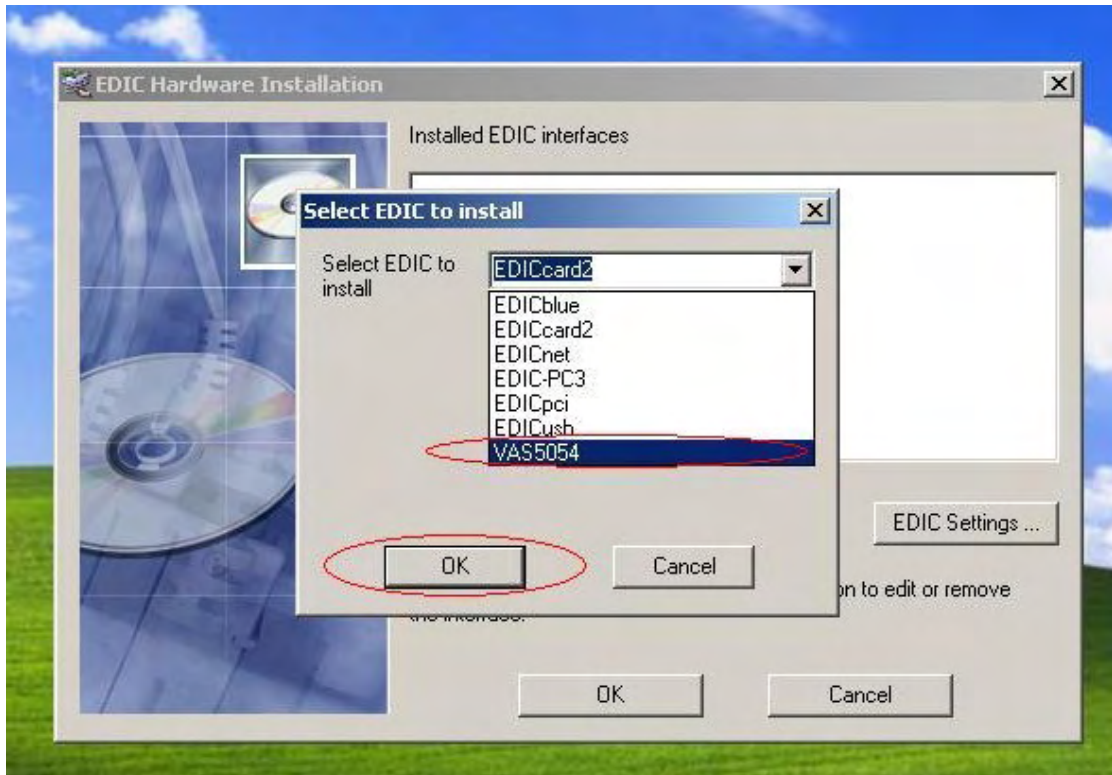
Step 34: go to computer desktop to **open “EDIC”**



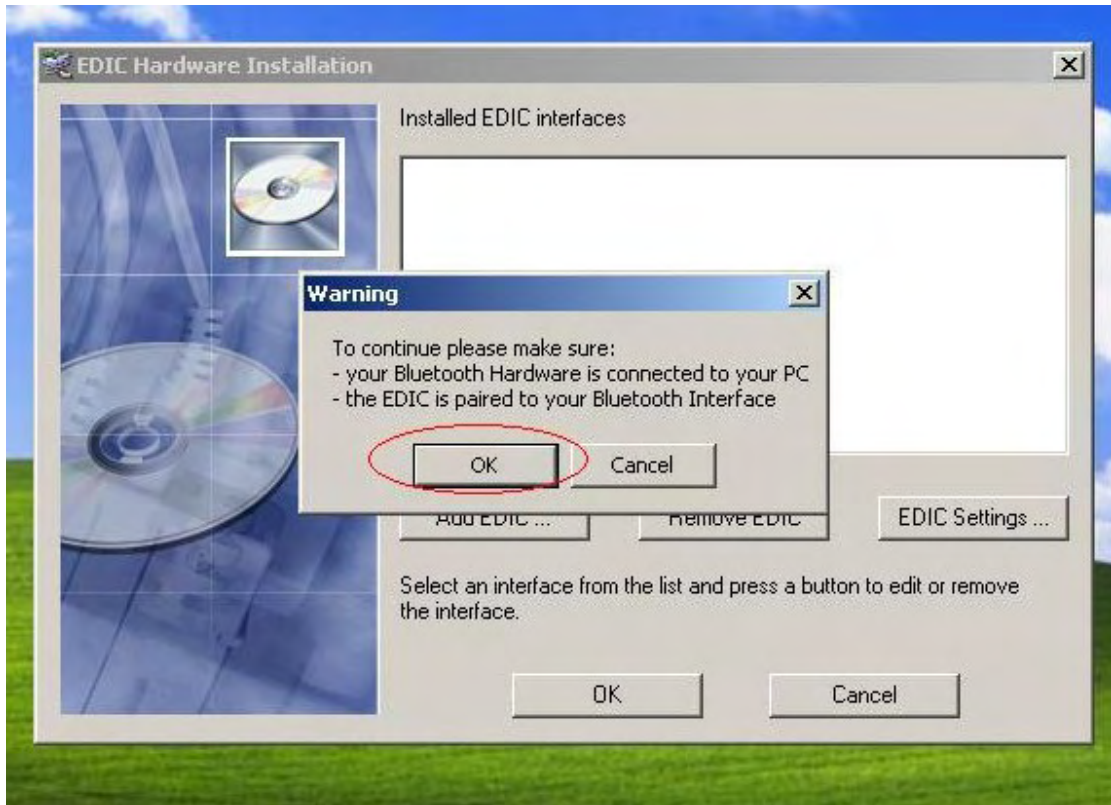
Step 35: Click “Add EDIC”



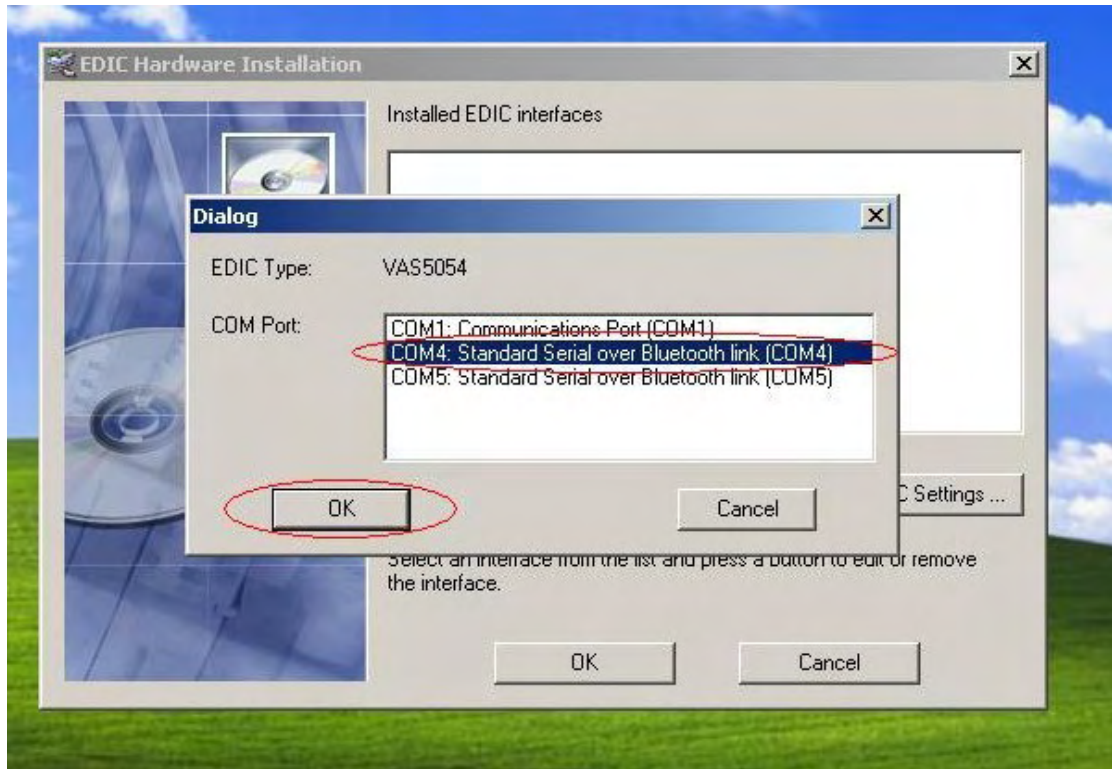
Step 36: Select EDIC to install, choose “VAS5054”



Step 37: when “Warning” window display, click “OK”



Step 38: in the window named “Dialog”, choose COM Port as **COM4**, then click “OK”.



Step 39: Complete setting, click “OK” to close this window.

