

SUPER MB STAR NET 05-2013



A: OBDII 16Pin B: USB Cable C: Express To RS232 Card D: Multiplexer E: RS232 To RS485 Cable
F: Verification Letter G: 14Pin Cable H: 38Pin Cable I: Driver for Express J: Driver for PCMCIA
K: PCMCIA To RS232 Card L: USB Key M: 4Pin Cable N: Mobile HDD (Normal Version)

**To protect your rights, please buy Official
Authorized Tools!**

Super MB STAR 05-2013 Description

Description

Super MB STAR is one of the best after-market tools for Bens diagnostic, coding/programming in the world, it is also an up-to-date tool for online upgrade directly, work with any laptops, compatible with Windows7/XP/VISTA/2000/Mac/Linux operation system, software including Xentry for new released **C204/ C205/ CLA117/ GLC156/ E207/ E212**, ect., which are able to work with Benz cars, trucks, Sprinters, Vans, Smart, Cobus, FUSO, BHARATBENZ, FOTON, etc.

The new Super MB STAR Net 05-2013 released **Internal HDD software** fit for:

Lenovo Series (X61T, X60, T60, T61, T400, E420, E430, etc.) **HP Series**, **Dell Series** (D630, D620, E6420, E6430, etc.) **Toshiba Series**, **Fujin Series**.

Update official website: www.supermbstar.com

New features of Super MB Star 05/2013:

- ★ Password Letter verification of your Super MB STAR Online
- ★ Latest version 05/2013
- ★ No need to active EPC/WIS any more, double click the icon then use it
- ★ New cars of C-Class 205, CLA117, GLC156, B 246, CLS 218, SLK172, BHARATBENZ, CLC 171, etc., are released in this version
- ★ **Online SCN Coding**/offline SCN Coding/offline coding are all available with this new version
- ★ New function WIS and EPC DATACARD is added
- ★ The car **PL67 (01-2013 Version)** is added to Benz price list
- ★ Online updater client platform **STAR Updater V3.0.0.1** for users' easier upgrade.
- ★ Support the hardware quick self-test and the software to be quickly recovery
- ★ **FDOK Key Calculator (Optional)**
- ★ Adjust truck Speed Limitation function (**Top version only**)

- ★ SBC Reset function (**Top version only**)
- ★ **SBC Special function Password Removed** (**Top version only**)
- ★ **A/C, SRS Special function Password Removed** (**Top version only**)
- ★ TV Activation function (**Top version only**)
- ★ Clean ASSYST plus Memory (**Top version only**)
- ★ W221 W216 Instrument Cluster AMG Style (**Top version only**)
- ★ Enable tank info & L/100KM into KM/L W211 (W203) (w221) and more (**Top version only**)
- ★ Airbag ECU unlock function (**Top version only**)
- ★ DPF Regeneration (**Top version only**)
- ★ No need password when you choose special function in DAS of W204 (**Top version only**)
- ★ **Diagnostic W204 /W207/ W212 by DAS Directly** (**Top version only**)
- ★ Start HHT Win from desktop icon directly, no need start from DAS.
- ★ **Offline Coding** key provide service. (**Top version only**)

Product software includes:

DAS: the automatically Diagnosis Assistance System

WIS.net: Workshop Information System

EPC.net: Electronic Parts Catalog

ST Finder: Part location finder

STARUTILITIES: the movement management system and self-test

PL 67: Price List tool to find out how much price by input the parts number

Xentry: New software released by Benz Company after 04/2009 by diagnosis new cars.

New Smart TAN Code: Opened special function in DAS program with Smart cars 450/451/452/454, even with the new type smart

Developer model: Engineer mode, remove limitations and open more Special functions.

Benz Disassembly system: Video lessons to teach you how to remove each part from Benz cars with details order steps.

Software language: Multi-languages 23 Languages, you can choose the one you need when you using it.

Normal version: One of 23 languages

Top version: (23 Languages all)

STAR UPDATER V3.0.0.1: Online upgrade tool for Super MB STAR users.

Product hardware includes:

- ★ **Multiplexer:** Super MB STAR Diagnostic interface
- ★ **OBDII 16Pin:** For cars with OBDII port
- ★ **Sprinter 14Pin:** For sprinter cars or some vans
- ★ **38Pin Cable:** For old Benz cars with 38 Pin port
- ★ **4Pin Cable:** For old Benz cars fit for 4 Pin port
- ★ **RS232 To RS485 Serial Cable:** Connect Multiplexer to PC/Laptop
- ★ **Mobile HDD with USB Cable:** with all the software per-installed work with any laptops by USB
- ★ **USB KEY:** Security USB Encryption
- ★ **Verification Letter with Password inside:** Used for verify the Super MB STAR and upgrade password.
- ★ **PCMCIA or Express Card:** Used for laptop without serial port

Hardware and software requirements:

Hardware requires at least Intel Celeron/Pentium 2.0GHz, 2G RAM, USB 2.0 recommended and Microsoft Windows 2000/XP/Vista/7 latest service pack installed.

F&Q

★ ***How many years of free updating can we enjoy?***

Super MB STAR provides one year free update online service. Super MB STAR Lite provides 3 months free update online service.

★ ***What else shall I do before using this item?***

You need setting some configurations before using this tool, we have both video and user manual to teach you how to do that, just follow the steps.

★ *Super MB STAR is able to work with Trucks and change the speed limitation?*

Yes, Super MB STAR is able to work with different kinds of Benz trucks, and it is able to change the speed limitation, please do that under the legal permission.

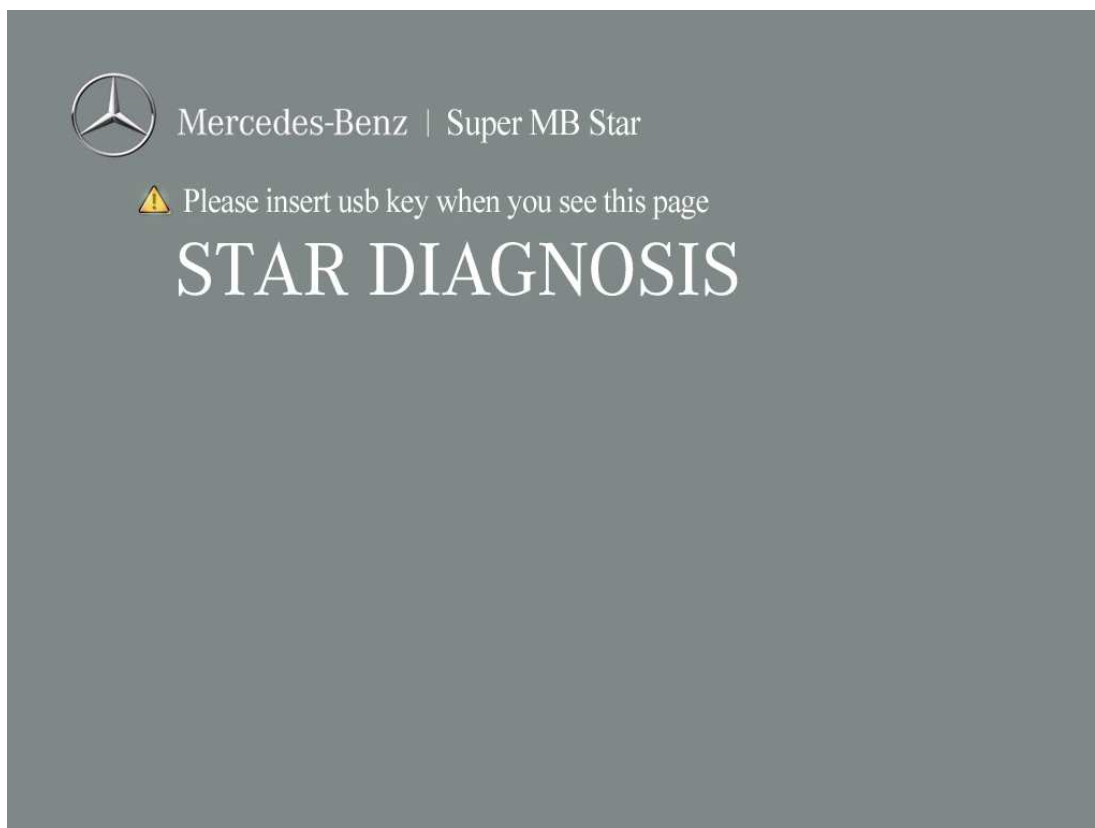
★ *What should I do if I do not know how to setting or face some difficulty when install the software?*

We provide online service 24 HRs, our after-sales service men can help you solve the problem through teamviewer, just contact the sales.

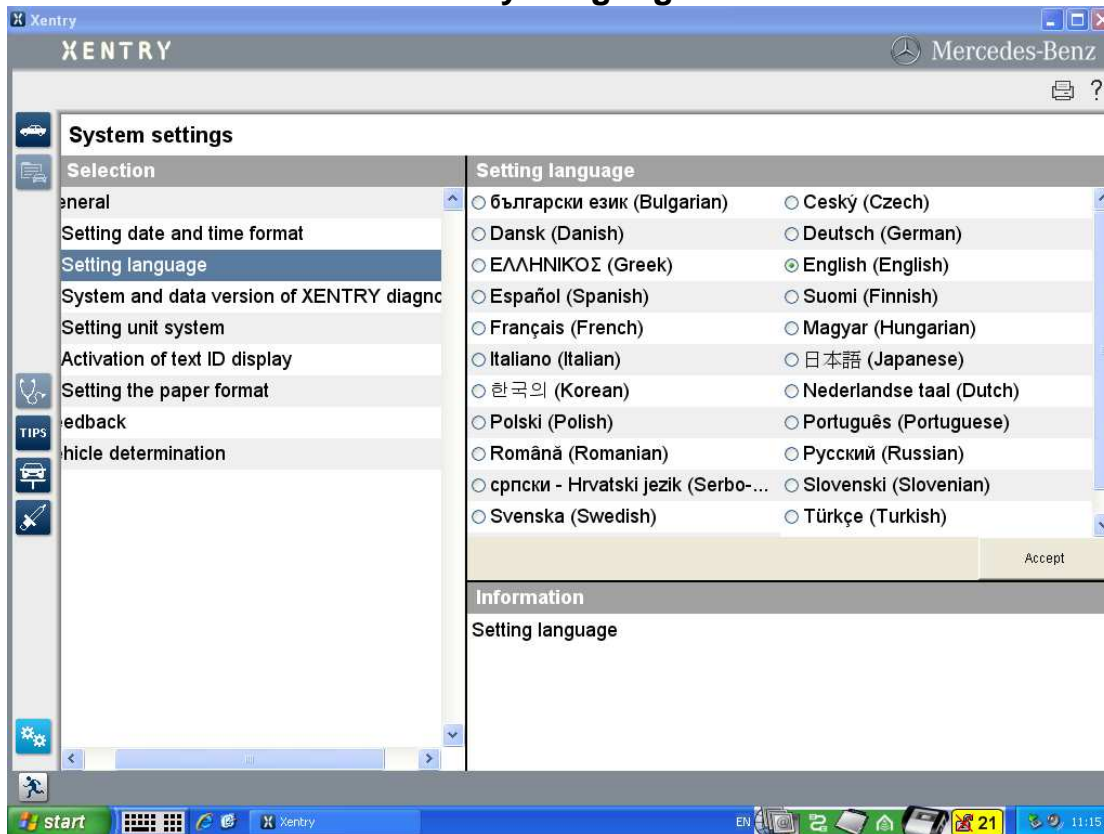
★ *Is this tool able to work with Reset the SBC Function?*

The Super MB STAR Top Version provides you SBC Reset, TV active and some other functions. You are able to access SBC Special function without password.

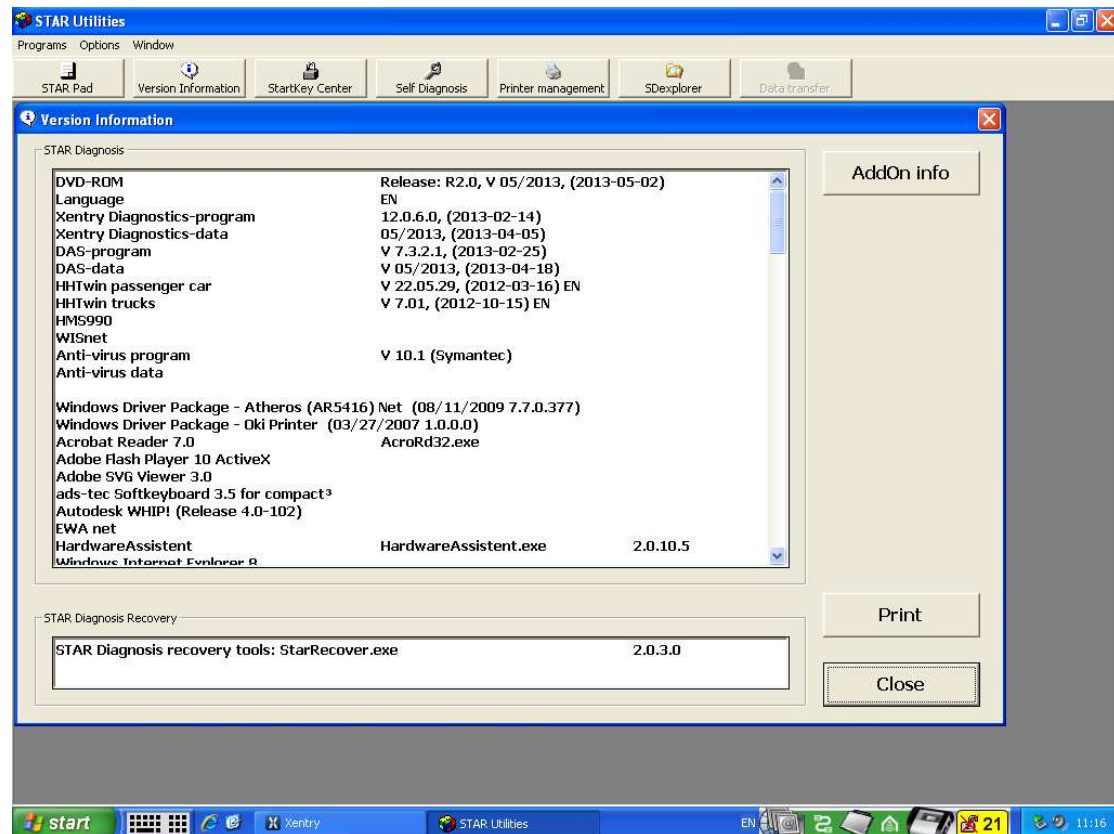
New Windows Welcome icons



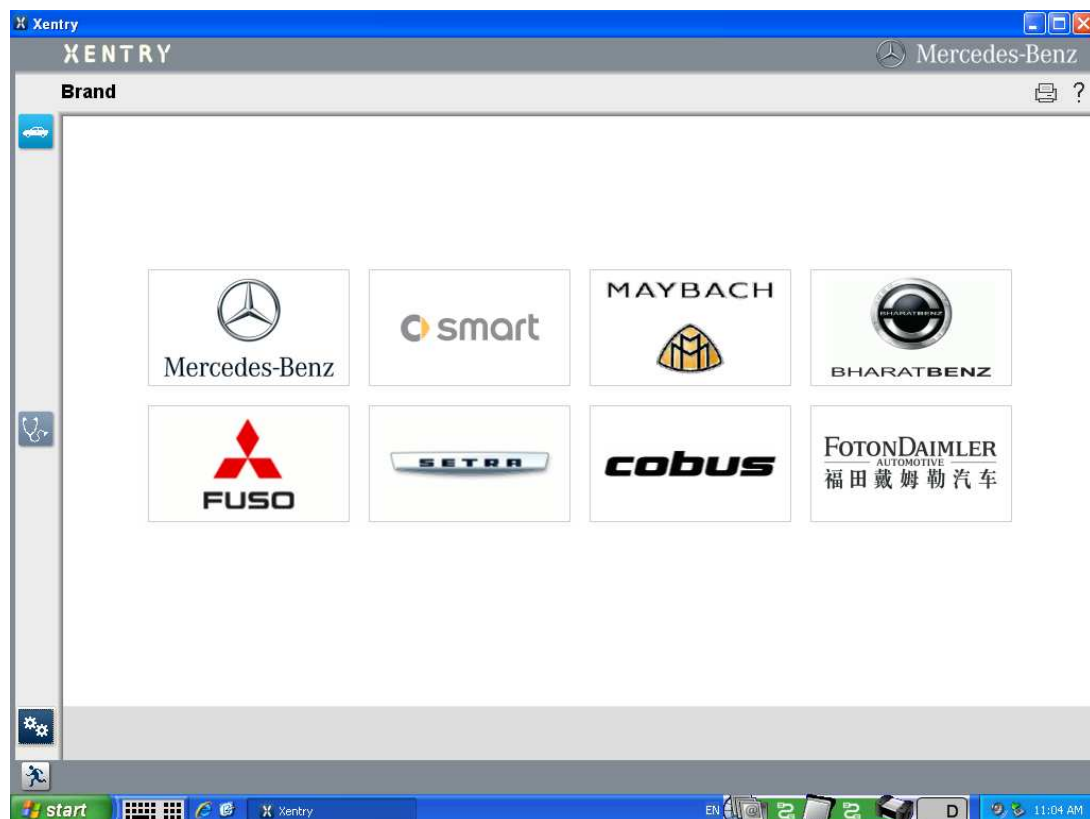
Xentry Languages



Version over All



New Xentry Version



Xentry TIPS Function (Need SCN account)

XENTRY TIPS

Änderungen | Suche | Meine Suchen | Info

News | Systemvoraussetzungen | Technologien | Disclaimer | Version

Release/Version	Wichtige Informationen / Neue Funktionen
v2.10 03/2011	<ul style="list-style-type: none"> Technische Migration Akamai Unterstützung
v2.8 09/2010	<ul style="list-style-type: none"> Der TIPS-Reader ist an den neuen Styleguide der Daimler AG angepasst. Fehler, die durch falsch administrierte User hervorgerufen werden, werden dem User mithilfe eines passenden Hinweistexts angezeigt (z.B. "Ihre Benutzereinstellungen für TIPS sind ungültig [ggf. Grund]. Bitte kontaktieren Sie Ihren Administrator.").
v2.6 03/2010	<p>Reader Themenmodul</p> <ul style="list-style-type: none"> Nach der Fahrzeugfestlegung und dem Starten von TIPS kann unter "Suche" direkt nach einer GI oder LI gesucht werden (unter "Dokumentnummer").
v2.4 09/2009	<ul style="list-style-type: none"> Beim Speichern eines TIPS Themas als PDF wird ein eindeutiger Dateiname vergeben Beim Speichern eines TIPS Fall/ TPR als PDF wird ein eindeutiger Dateiname vergeben. In der Dokumentenansicht entfällt die Auflistung der Gültigkeiten. Das Fallmodul wird um zusätzlich benötigte Datenfelder in den Registern "Fall" und "Zustandsdaten" erweitert. Die User-ID des angemeldeten Anwenders wird beim Ausdrucken eines Dokumentes, eines Falles oder eines TPR hinzugefügt. Die Darstellung des Symptombaums für die Themensuche wird übersichtlicher.
v2.2 04/2009	<p>1. Fallmodul</p> <ul style="list-style-type: none"> PDF-Generierung über Druckbutton im Fallmodul: Beim Betätigen des Druckbuttons wird aus dem Fall ein pdf erstellt, das gedruckt werden kann. <p>2. Themenmodul</p> <ul style="list-style-type: none"> Aktivierung des Druckbuttons im Reader: Der Druckbutton in der Themenansicht ist aktiviert. Anzeige von Anhängen gemäß Zuordnung Beanstandung, Ursache, Abhilfe, Teile: Anhänge werden gemäß ihrer Zuordnung zu Beanstandung, Ursache, Abhilfe, Teile stets unterhalb des jeweiligen Feldes angezeigt. Entfall der Serienmaßnahmen

Logged in: [User Name]

Xentry Version

XENTRY

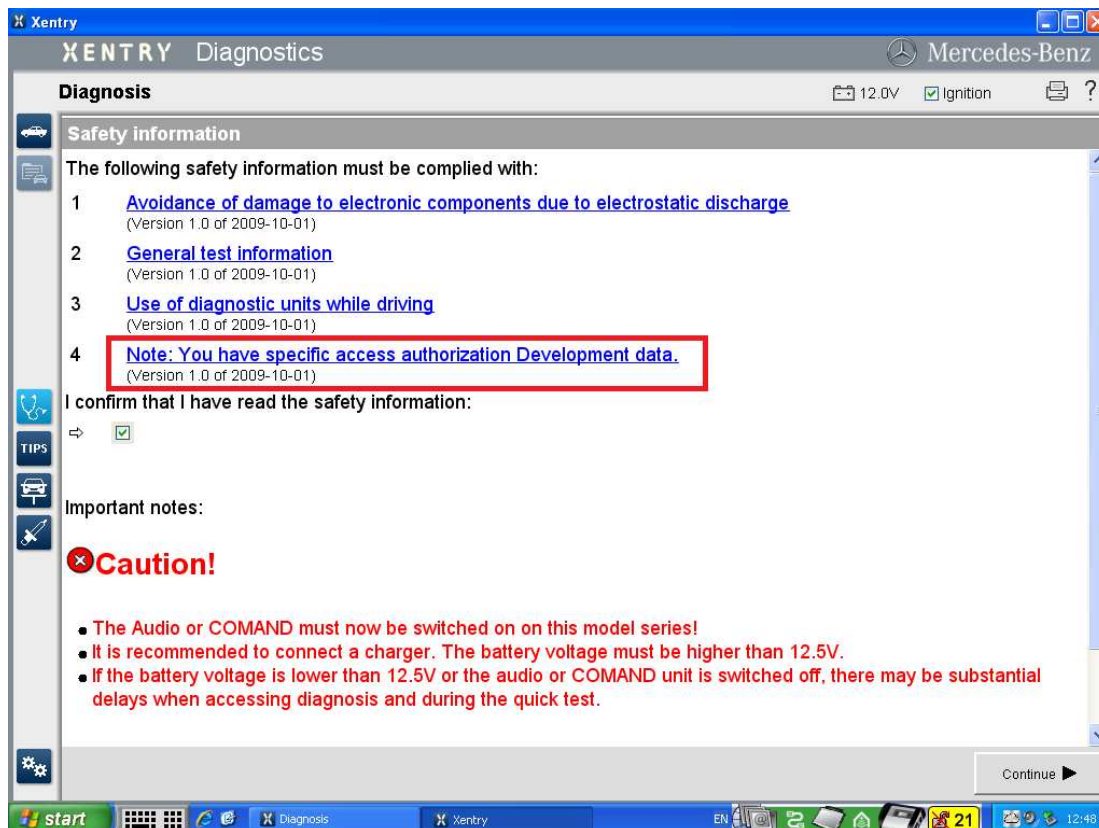
System settings

Selection	System and data version of XENTRY diagnostics
General	12.0.6.0 XENTRY diagnostics version
Setting date and time format	DVD 05/2013 Data release of XENTRY Diagnostics
Setting language	1.2.11.0 Software version of ASAM server
System and data version of XENTRY diagnostics	8.2.93 Software version of ASAM server
Setting unit system	
Activation of text ID display	
Setting the paper format	
Feedback	
Vehicle determination	

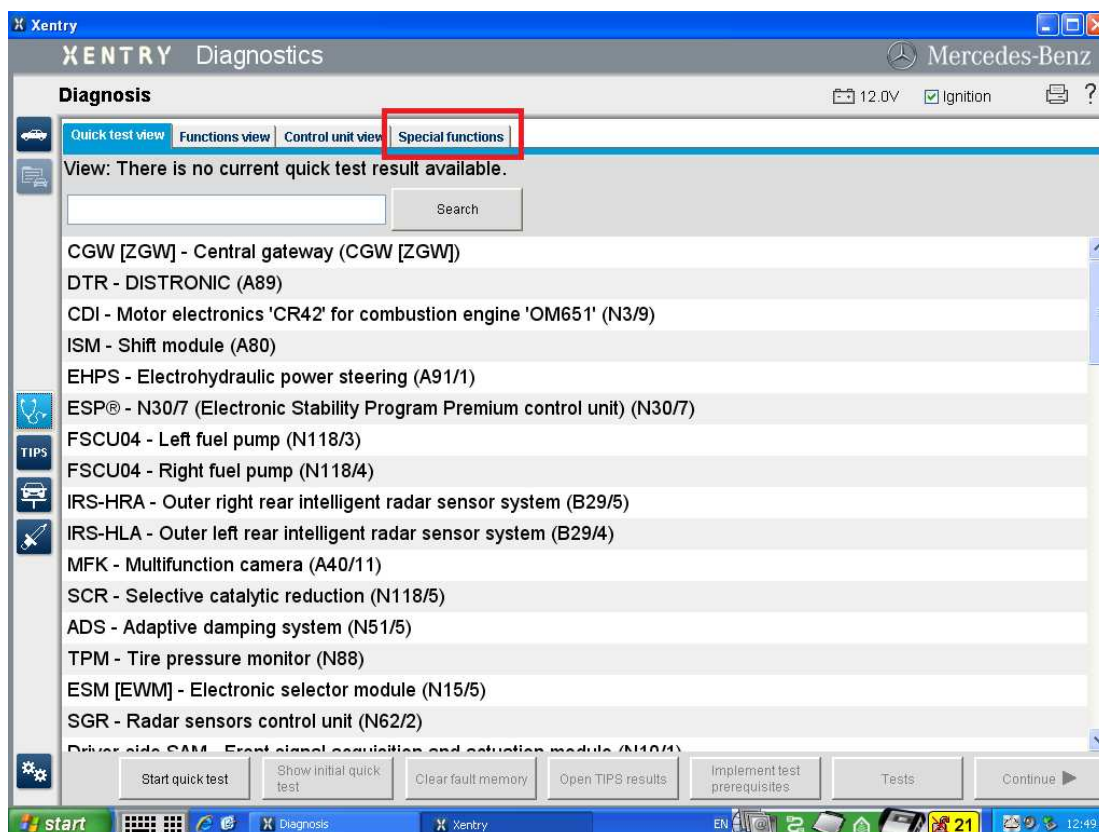
Information

System and data version of XENTRY diagnostics

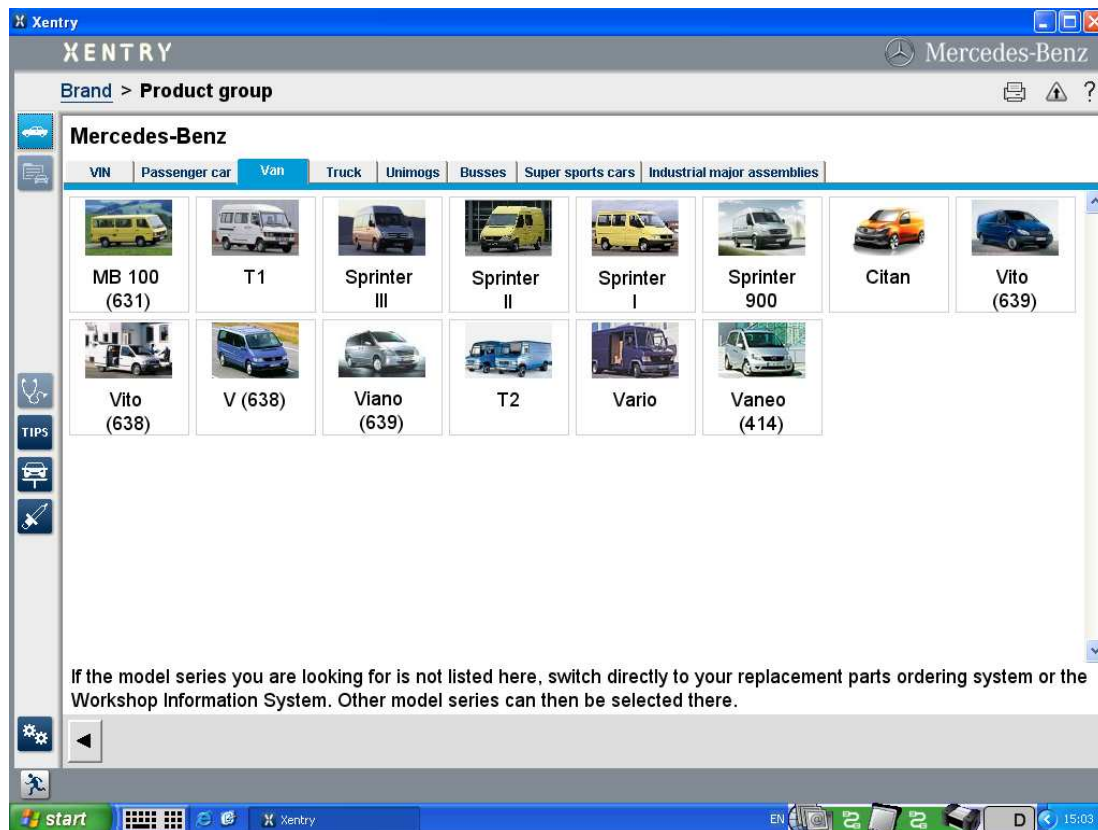
Xentry Developer mode



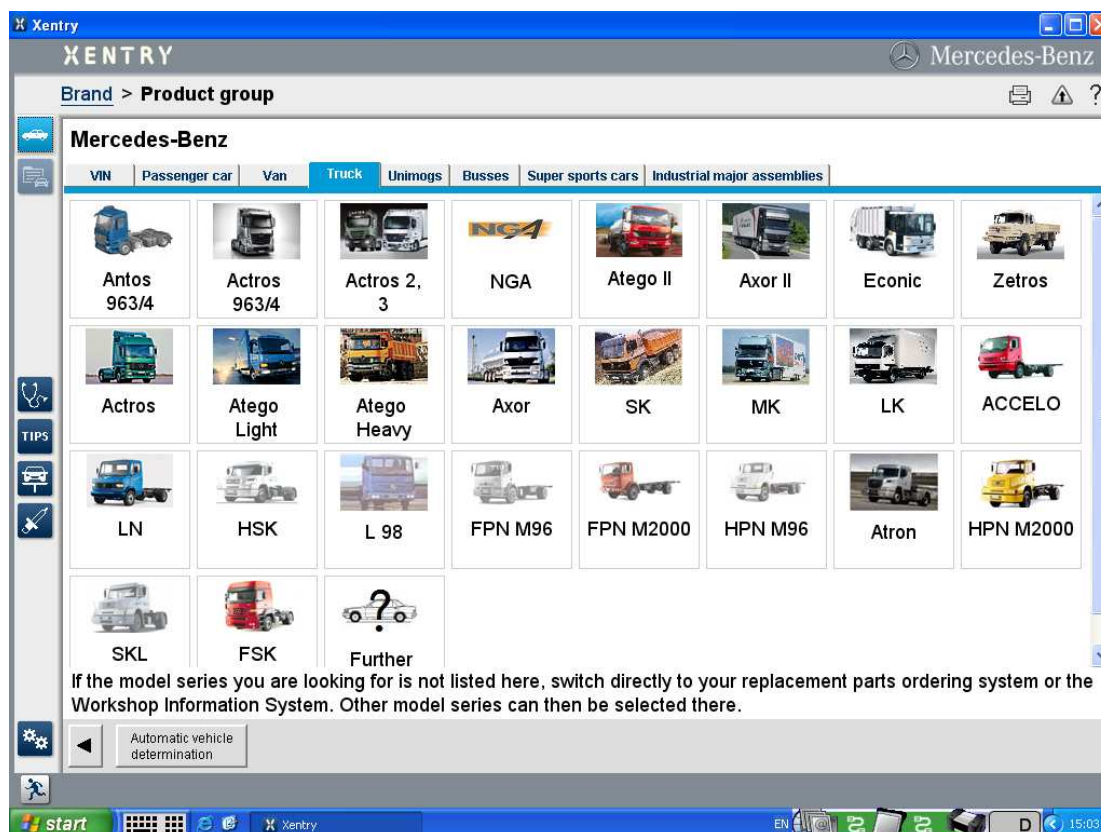
Xentry Special Function



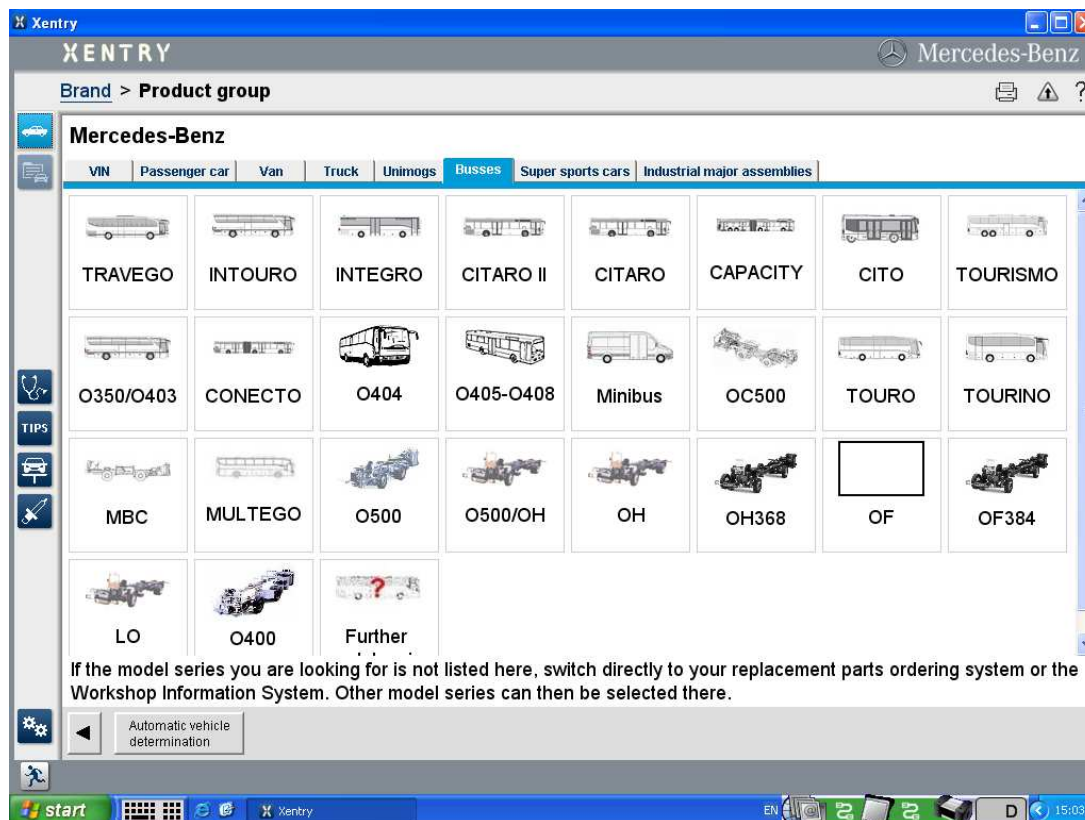
New Xentry Van List



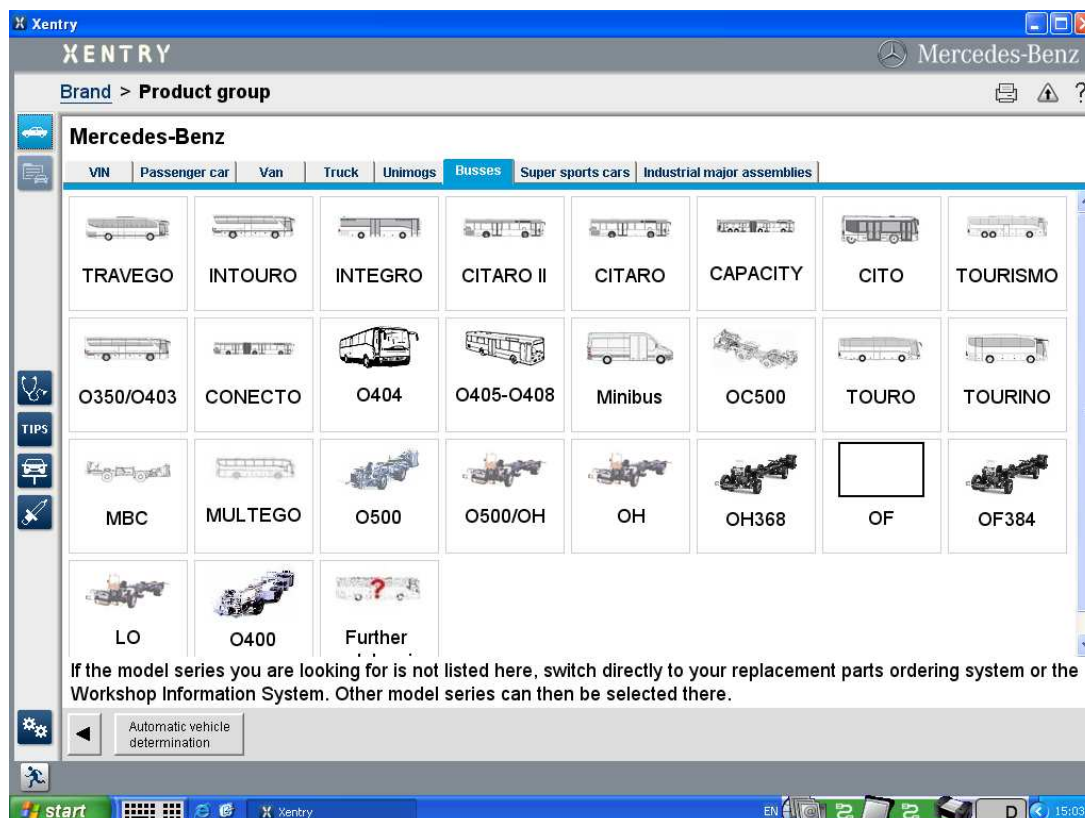
New Xentry Truck List



New Xentry Busses List



New Xentry Industrial major assemblies List



New Version WIS

The screenshot shows the 'Current WIS search context' dialog box in the WIS/ASRA - Mercedes-Benz & smart - admin application. The dialog box contains several input fields and sections:

- Vehicle type:** None
- Sales designation:** (empty)
- Major assemblies:** None
- Vehicle identification number:** WDB
- Engine number:** (empty)
- Groups:** None
- Information types:** None
- Document number:** (empty)
- Document title:** (empty)
- Search mode:** Standard search
- Document languages:** English, English, English
- Software version:** 3.6.20.0
- Publication:** G/04/13; WIS 04/13, Vollversion; 2013-03-21 16:00:00.0
- Publication date:** 2013-03-21

The dialog box has a 'Close' button at the bottom right. The background shows the WIS/ASRA application interface with a sidebar containing icons for WIS, ASRA, SSL, MSS, and EPC.

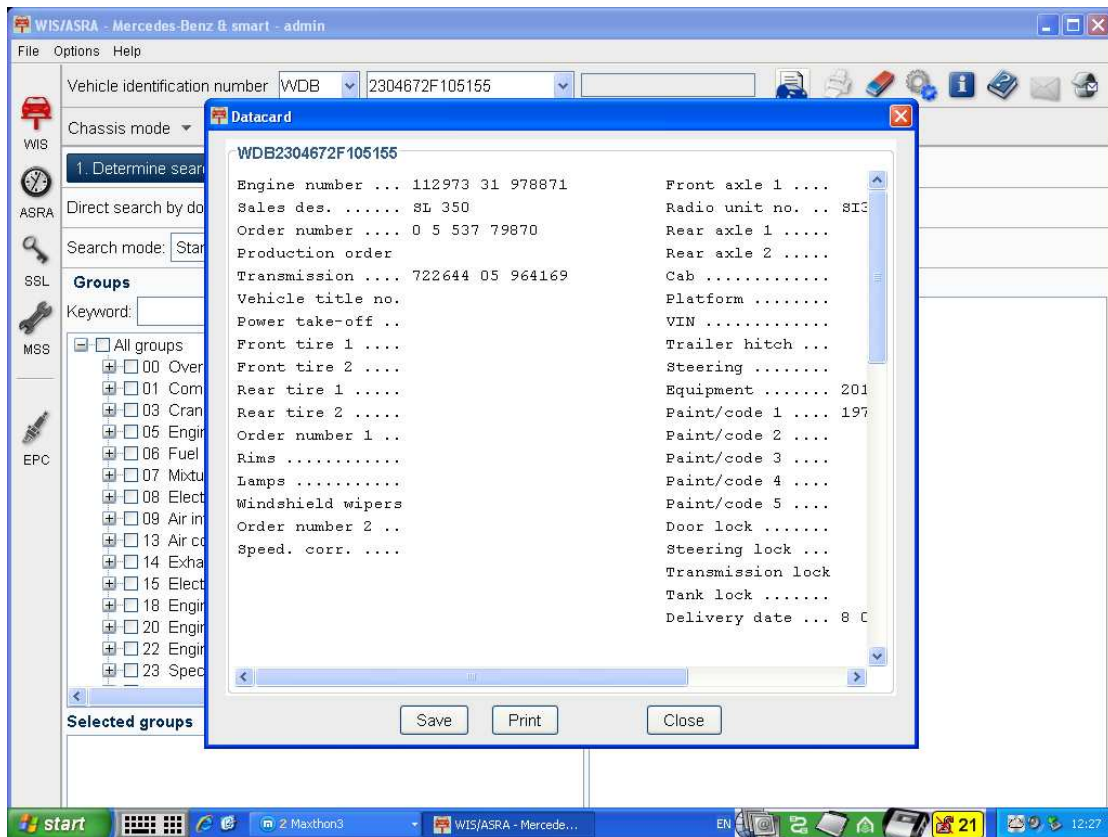
WIS Details functions

The screenshot shows the 'WIS model designation' dialog box in the WIS/ASRA - Mercedes-Benz & smart - admin application. The dialog box contains several sections and input fields:

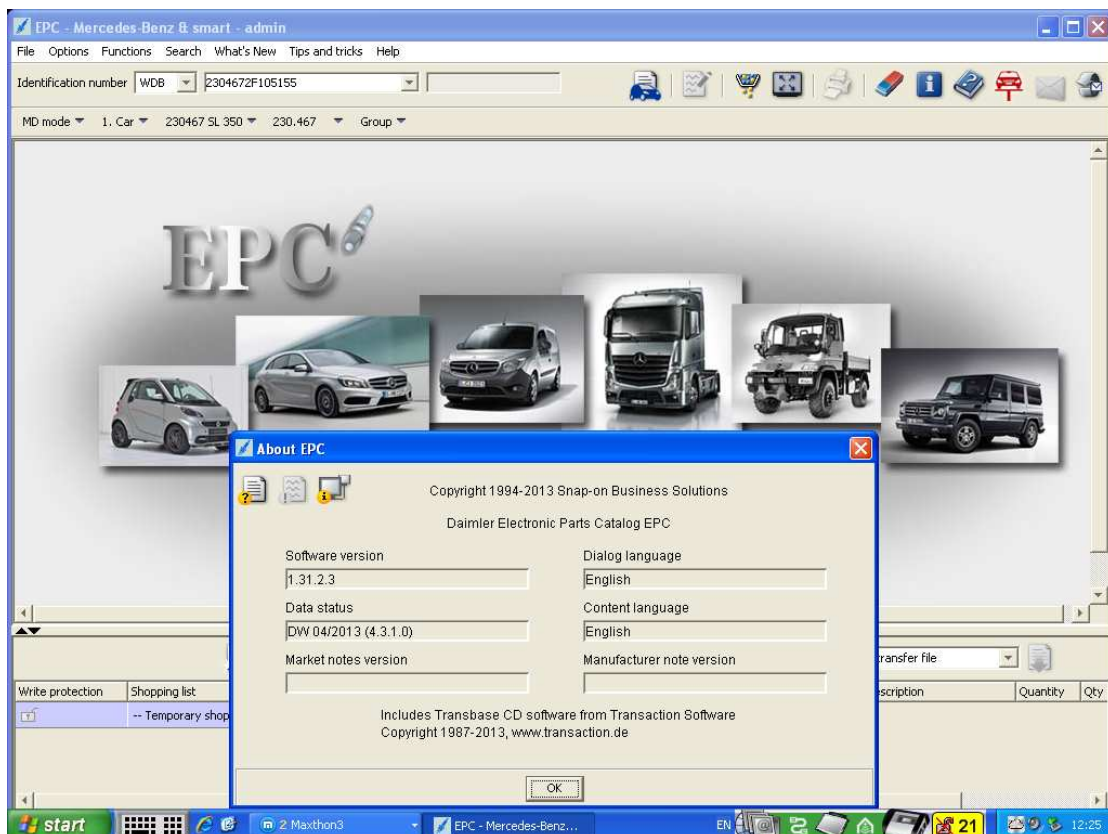
- Vehicle identification number:** WDD, 2211222A083065
- Chassis mode:** CAR, 221122(2A083065) S 320 CDI, 642930(40 229991), AG 722902(00 809565) BM 722.902
- 1. Determine search criteria** (selected)
- 2. Start search**
- 3. Show documents**
- Vehicle type:** 4xWD
- Model:** 460210, 230 G
- Sales designation:** 230 G
- Engine:** 115973
- Major assembly:** HI, 741501

The dialog box has a 'Close' button at the bottom right. The background shows the WIS/ASRA application interface with a sidebar containing icons for WIS, ASRA, SSL, MSS, and EPC.

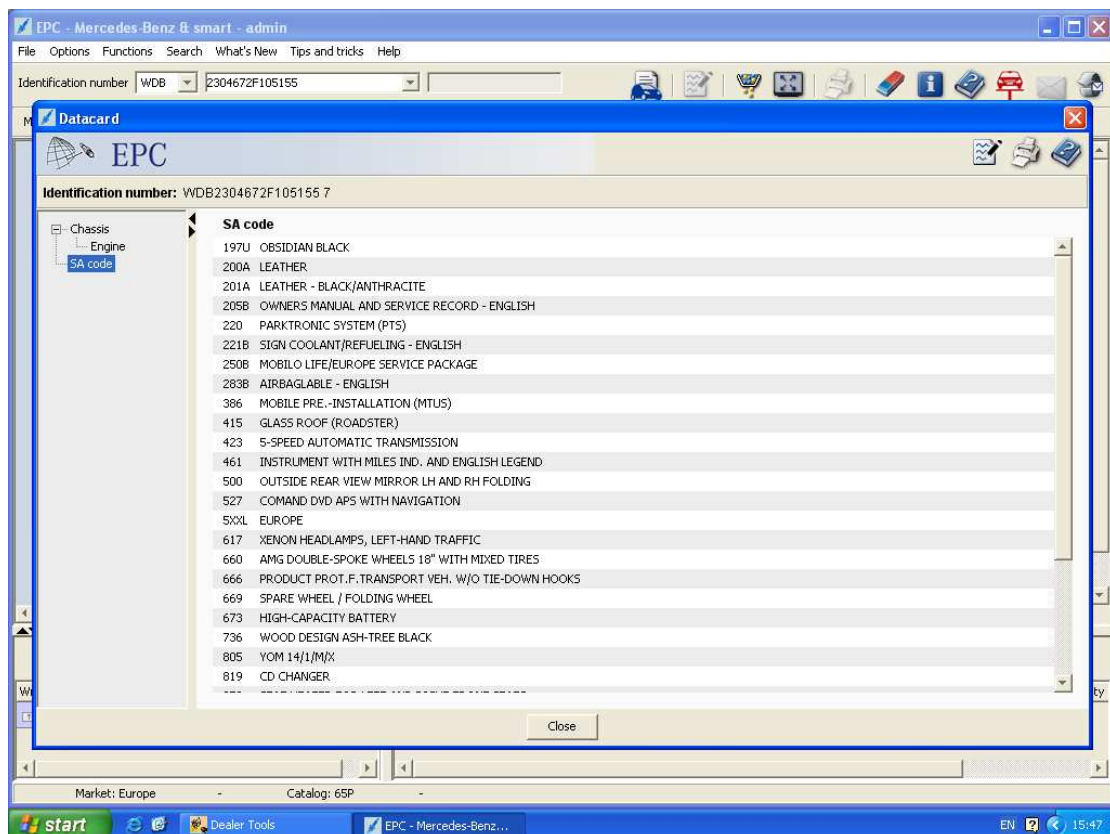
WIS Databcard Function



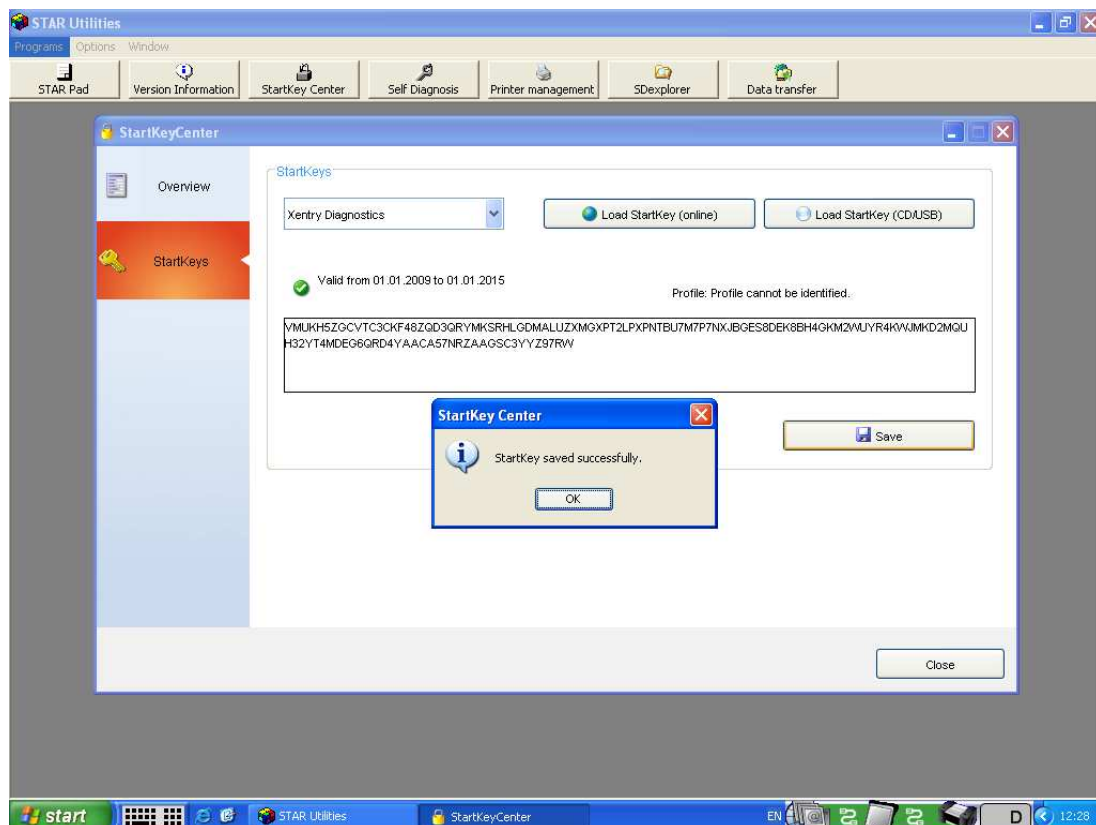
New EPC Function



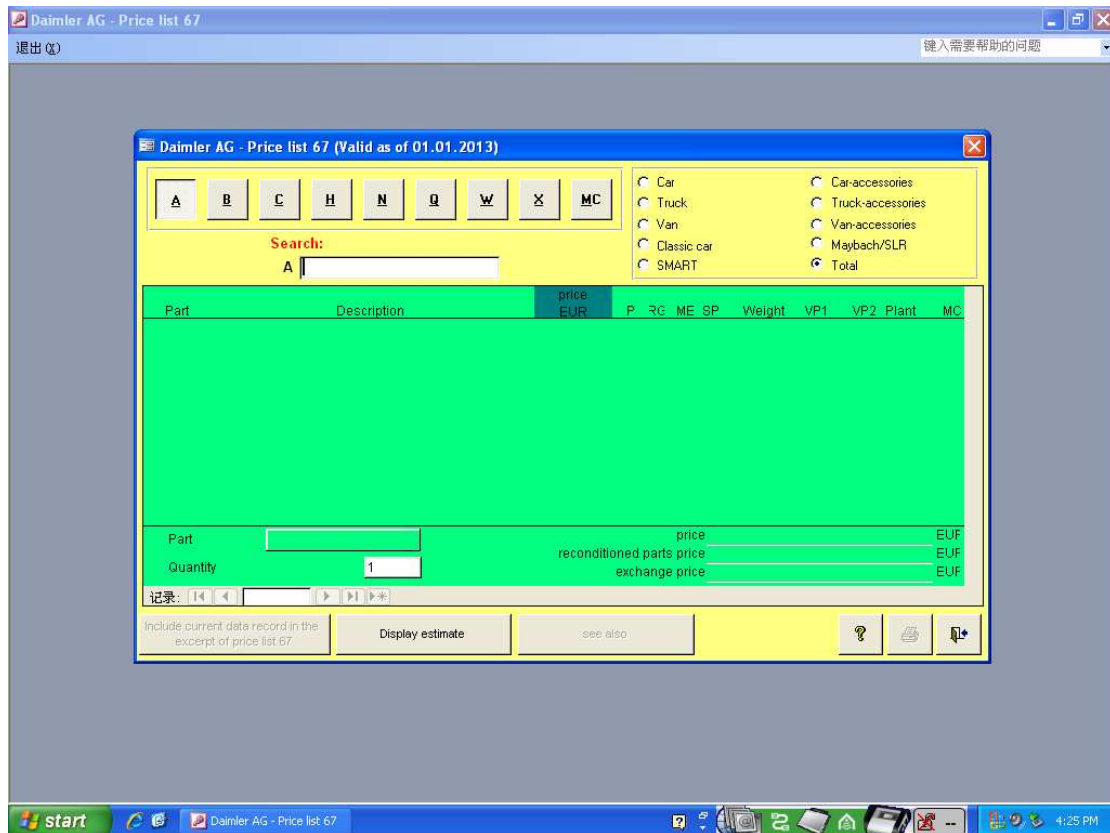
EPC Datacard



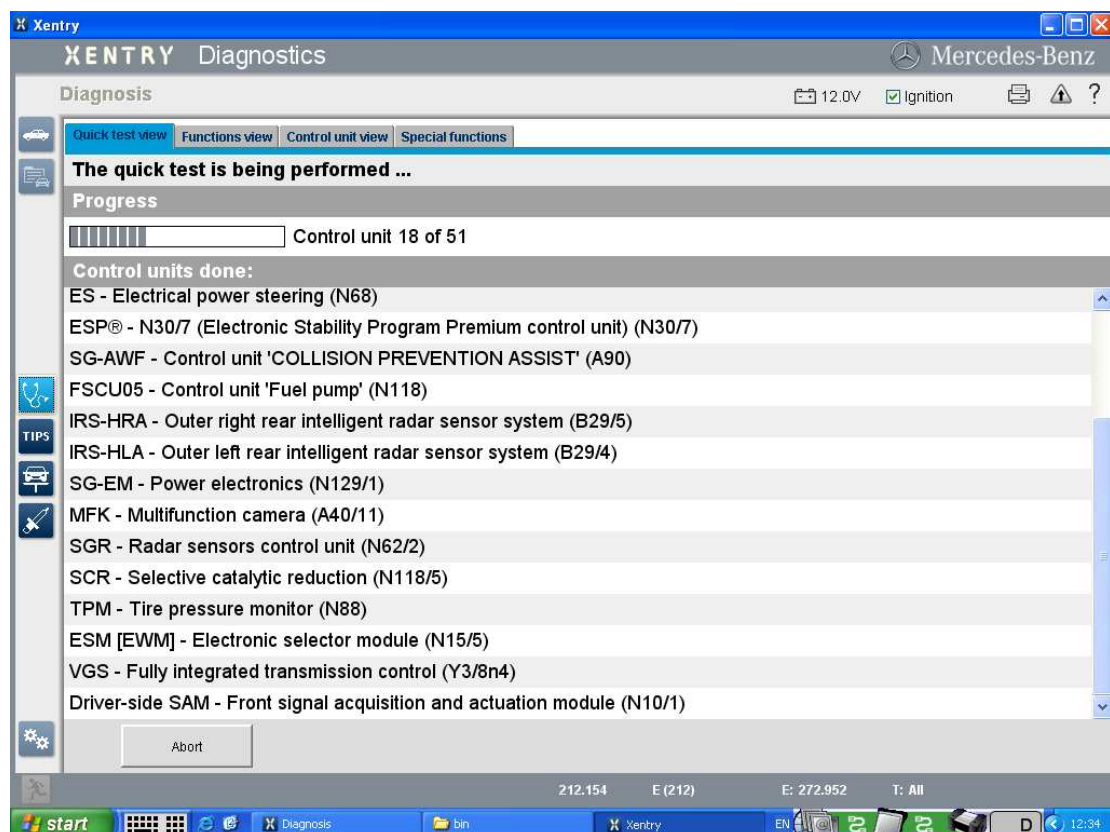
New Start Key Center



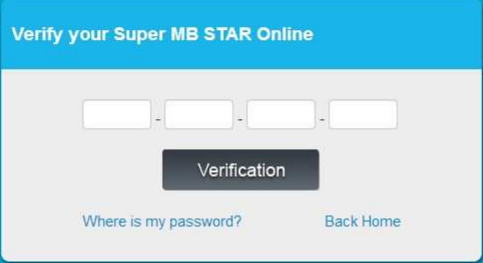
PL 67 (2013-1) Version



Xentry Works with W212



Super MB STAR Online Verify



Verify your Super MB STAR Online

- - -

Verification

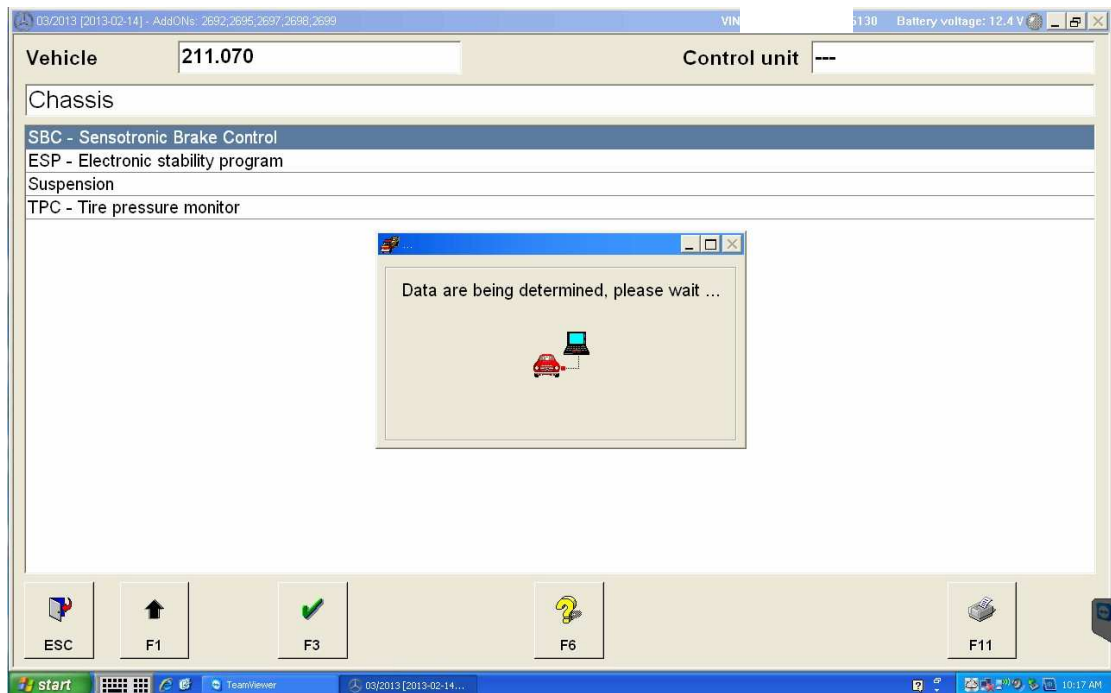
[Where is my password?](#) [Back Home](#)

Copyright © 2009-2013 Super MB Star INC. All Rights Reserved.

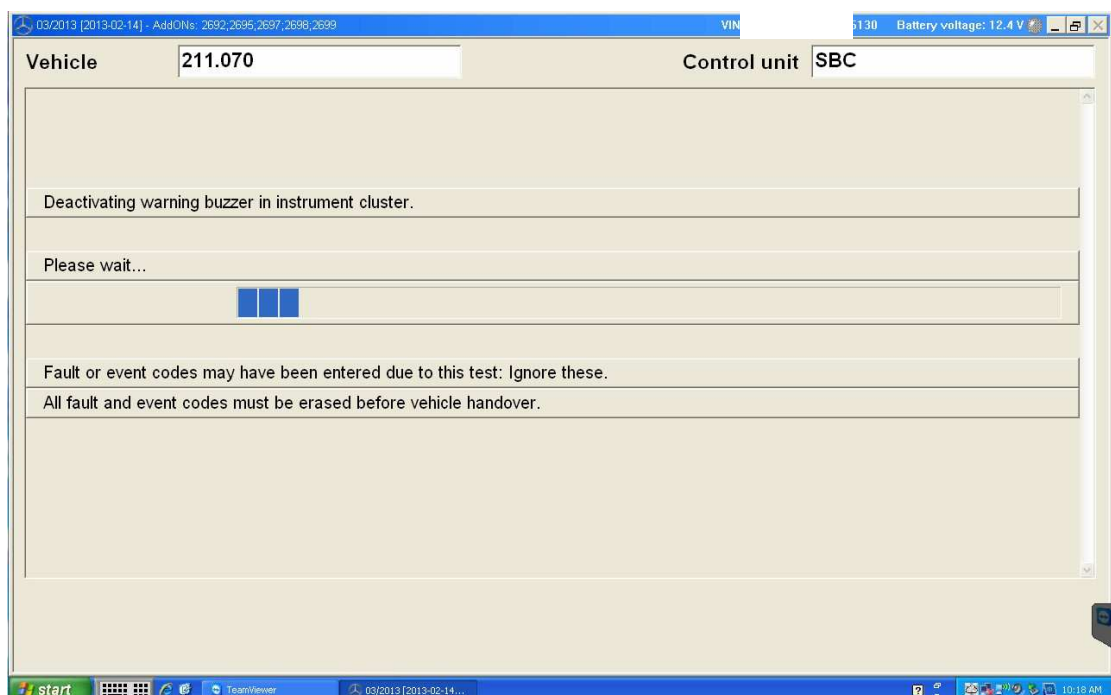
Super MB STAR SBC Special Function Access

(TOP Version Only)

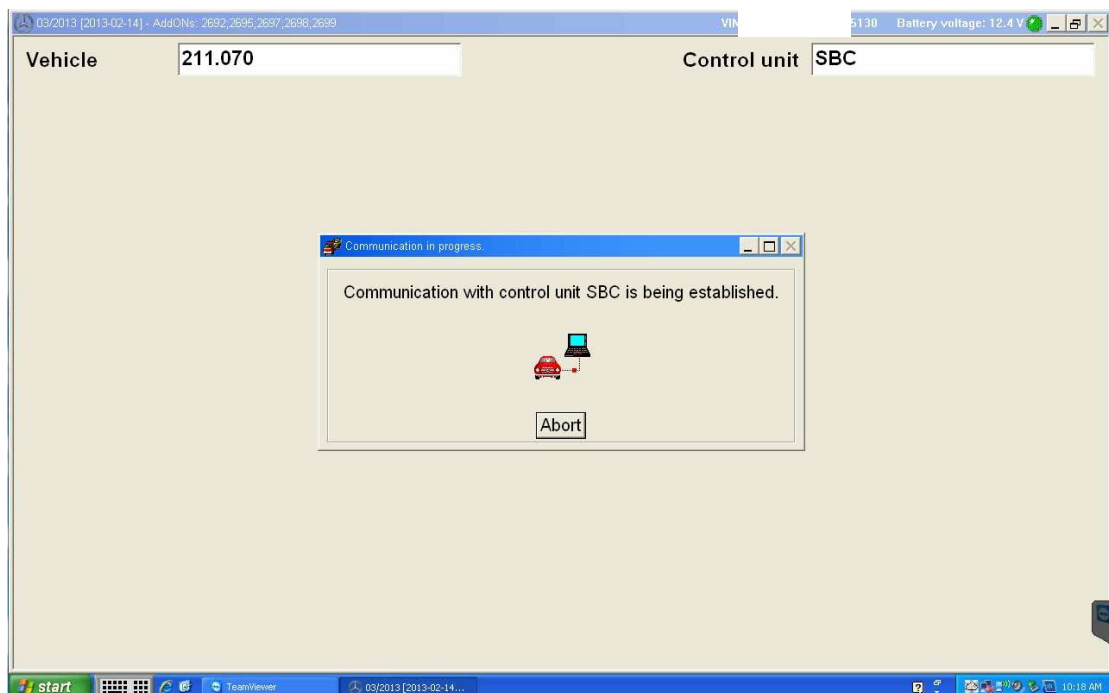
1. Enter the DAS Software and choose the module SBC.



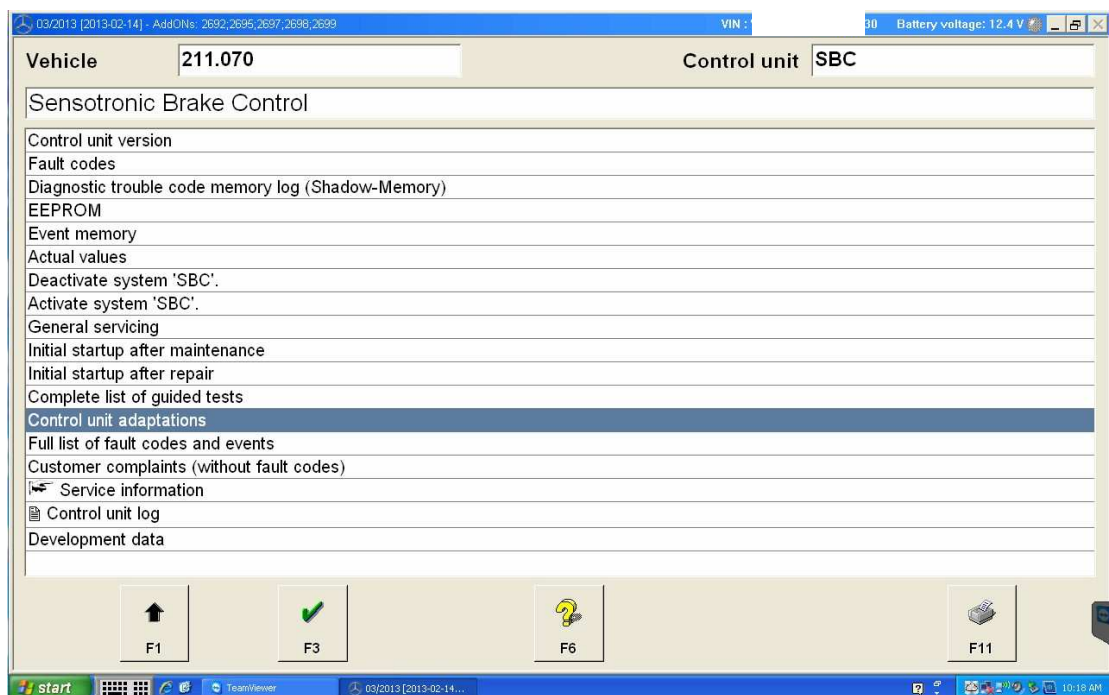
2. Press F3 to continue.



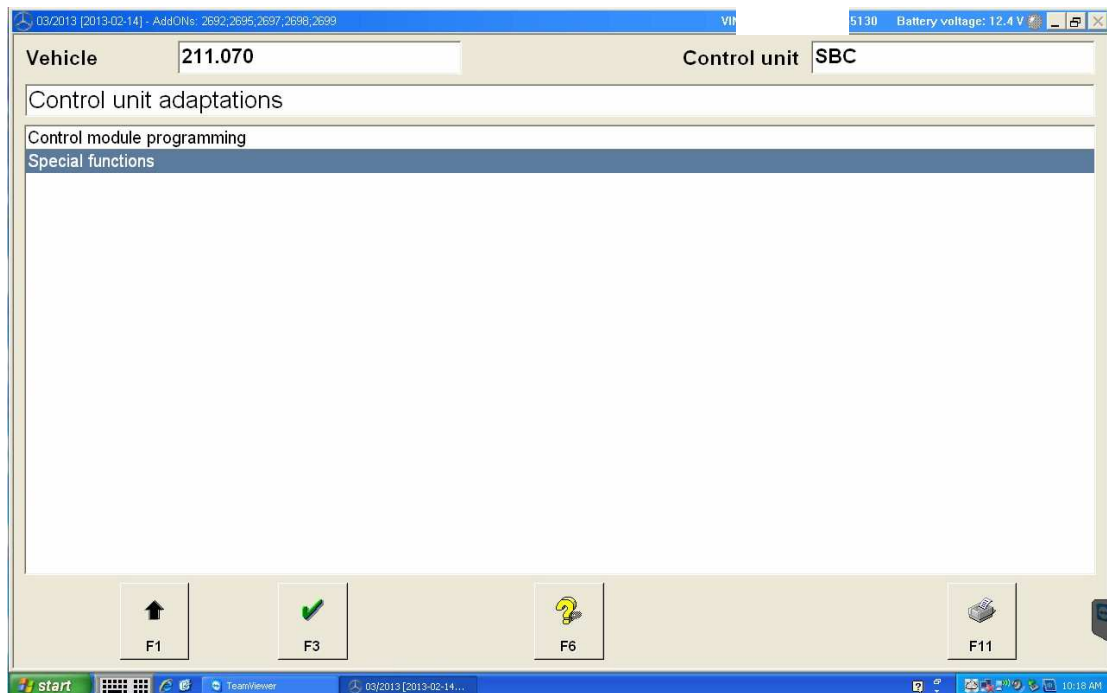
3. Wait for communication between car and laptop.



4. Choose Control Unit adaptations



5. Choose Special function



6. Access into Special Function successfully without password request.

