



CAS 4+

Copy key without key

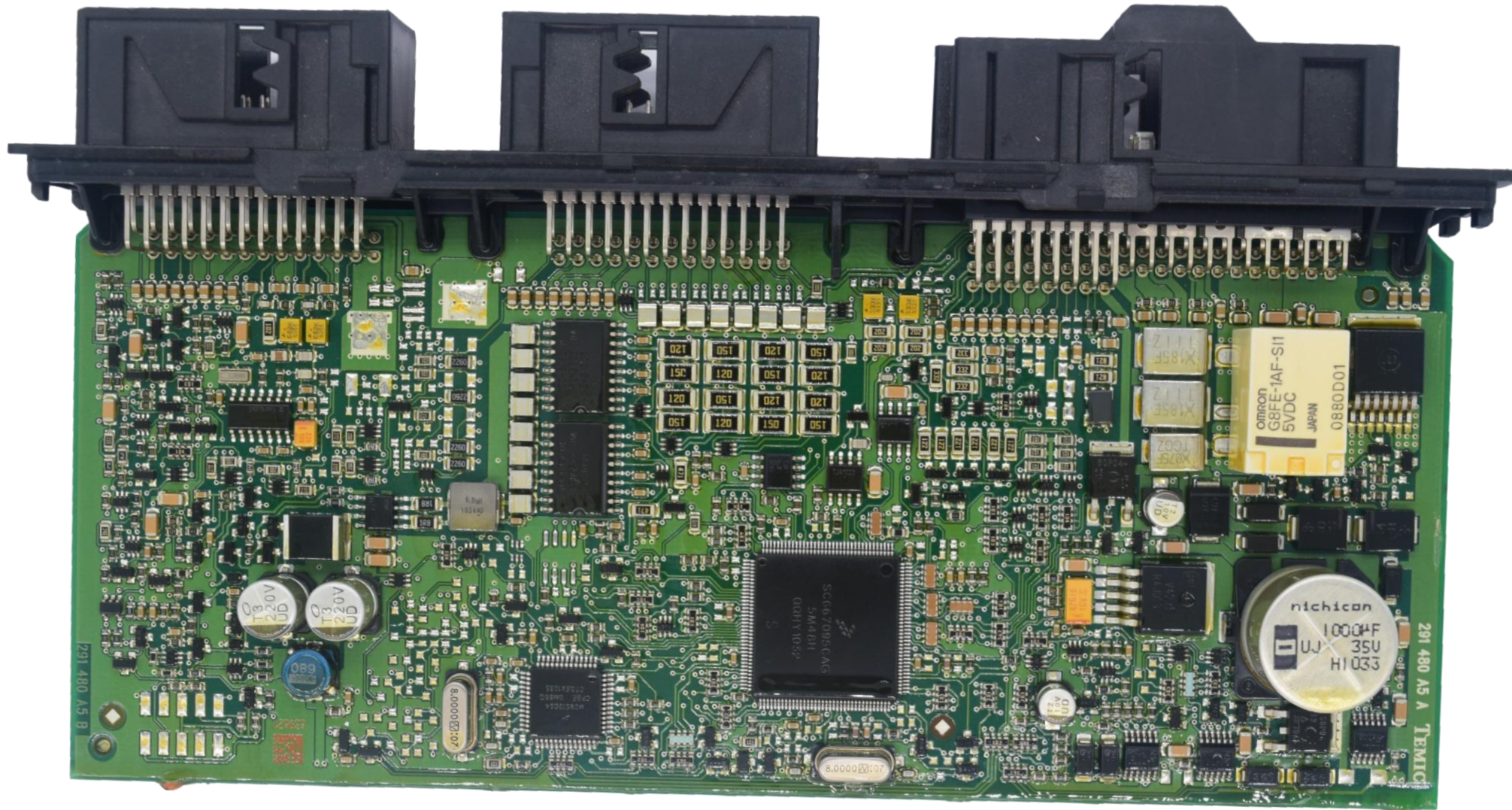
CG-DI

**CAS 4+ anti-theft auto keys
are all lost, need to be read to
configure the key, read CAS 4+
anti-theft data and engine
computer data, to load data
distribution keys。**

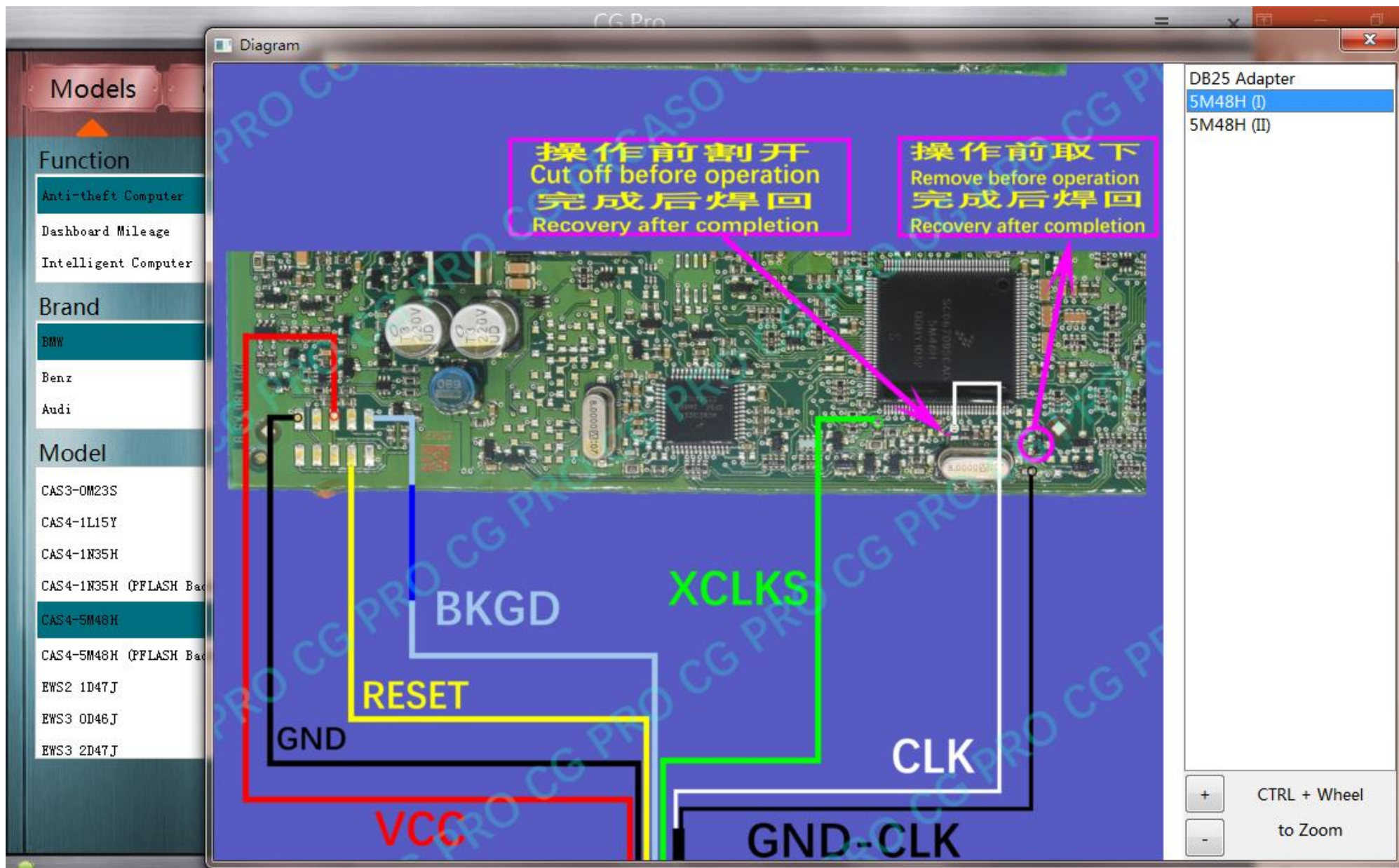
Operating CG-Pro
Read CAS 4+ anti-theft data



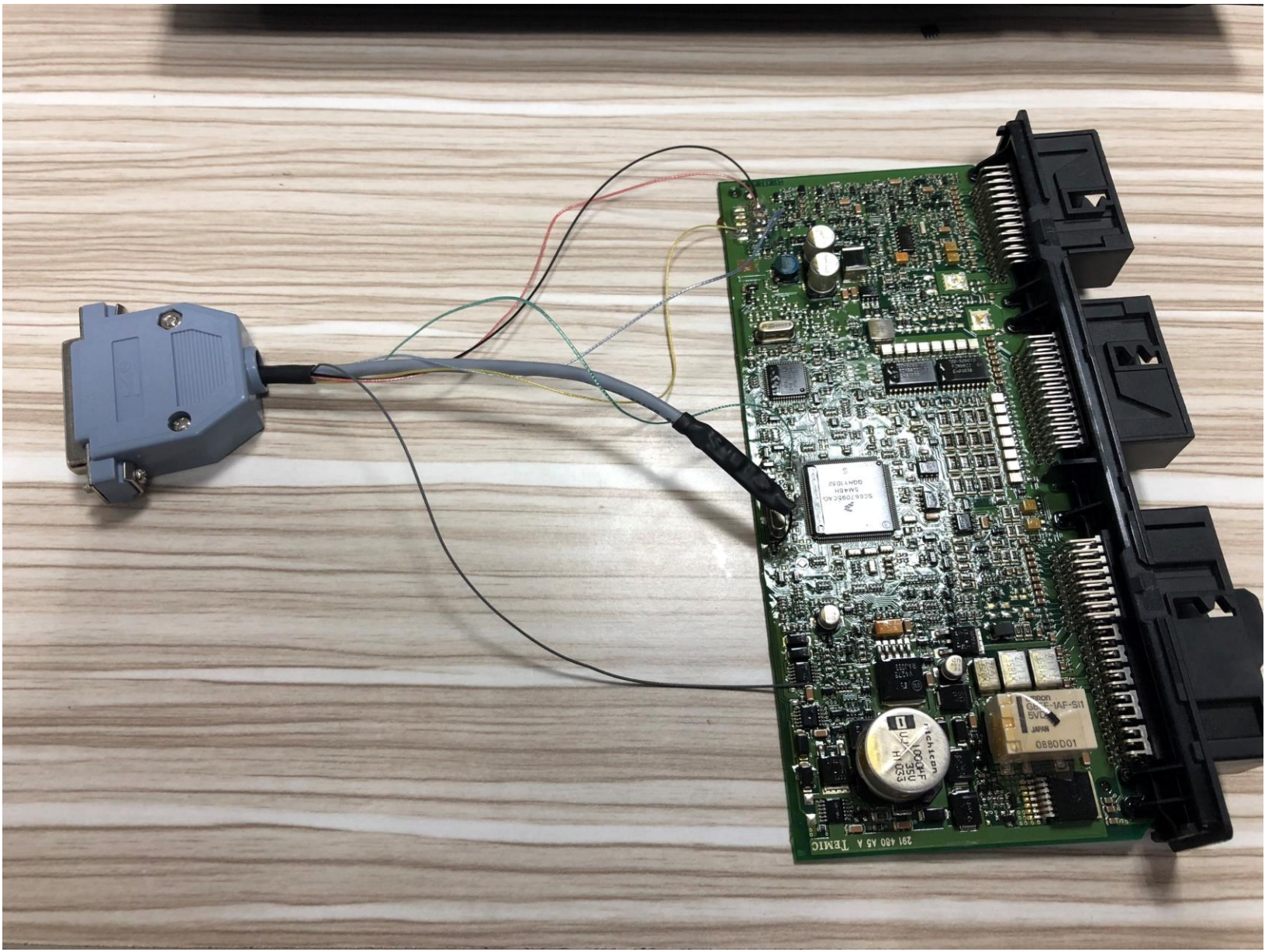
CAS 4+ anti-theft computer module style



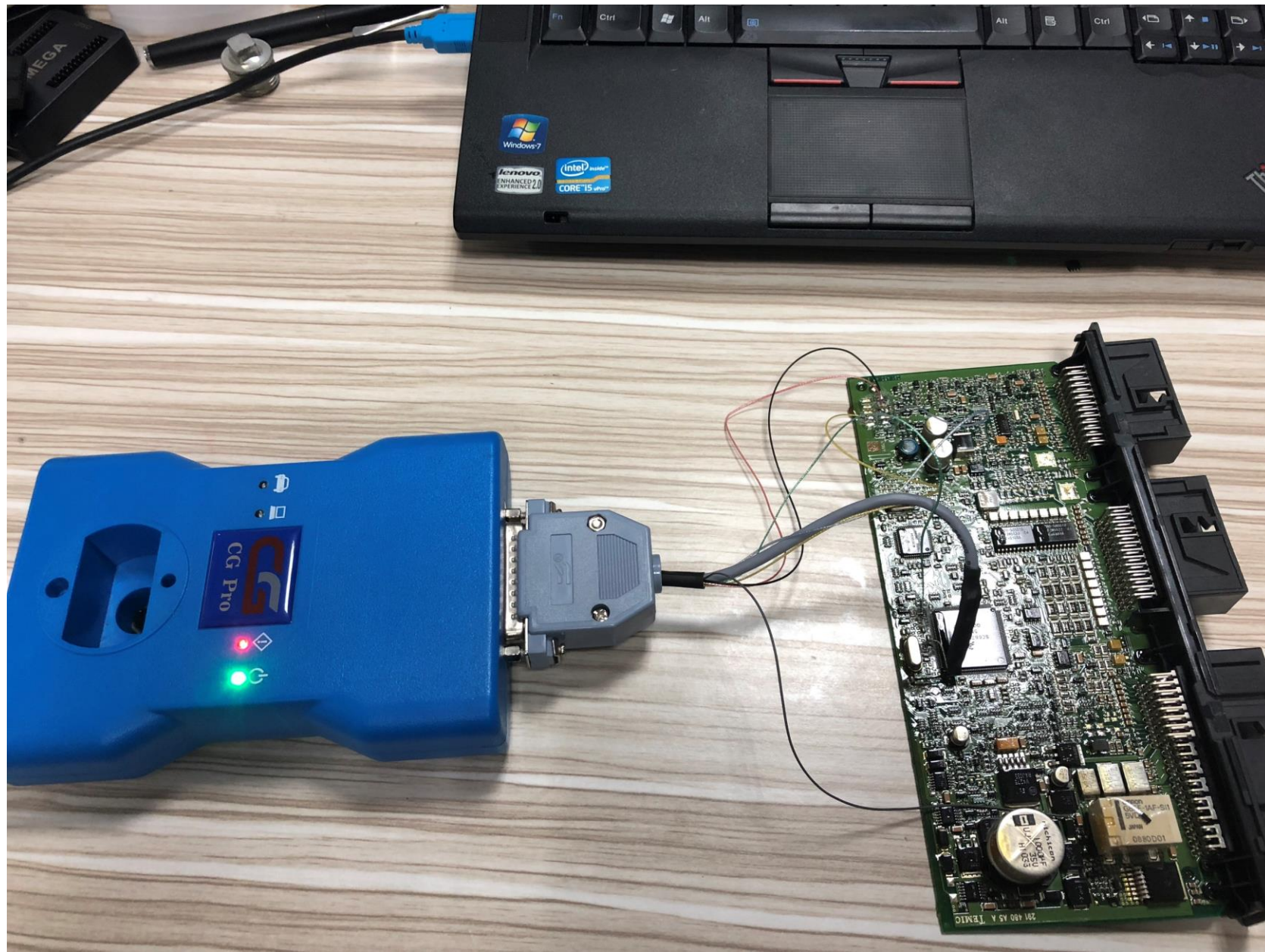
CAS 4+ anti-theft computer module



Software physical wiring diagram



Physical connection



Connect theCG-Pro

CG Pro

Models Chips

Function

- Anti-theft Computer
- Dashboard Mileage
- Intelligent Computer

Brand

- BMW
- Benz
- Audi

Model

- CAS3-0M23S
- CAS4-1L15Y
- CAS4-1N35H
- CAS4-1N35H (PFLASH Backup)
- CAS4-5M48H
- CAS4-5M48H (PFLASH Backup)
- EWS2 1D47J
- EWS3 0D46J
- EWS3 2D47J

Diagram Open Save Read Write Erase Partition Decrypt Encrypt

	[0]	[1]	[2]	[3]	[4]	[5]	[6]	[7]	[8]	[9]	[A]	[B]	[C]	[D]	[E]	[F]	0	1	2	3	4	5	6	7	8	9	A	B	C	D	E	F	
00000000	FF	FF	FF	FF	FF	FF	FF	FF	FF	FF	FF	FF	FF	FF	FF	FF
00000010	FF	FF	FF	FF	FF	FF	FF	FF	FF	FF	FF	FF	FF	FF	FF	FF	
00000020	FF	FF	FF	FF	FF	FF	FF	FF	FF	FF	FF	FF	FF	FF	FF	FF	
00000030	FF	FF	FF	FF	FF	FF	FF	FF	FF	FF	FF	FF	FF	FF	FF	FF	
00000040	FF	FF	FF	FF	FF	FF	FF	FF	FF	FF	FF	FF	FF	FF	FF	FF	
00000050	FF	FF	FF	FF	FF	FF	FF	FF	FF	FF	FF	FF	FF	FF	FF	FF	
00000060	FF	FF	FF	FF	FF	FF	FF	FF	FF	FF	FF	FF	FF	FF	FF	FF	
00000070	FF	FF	FF	FF	FF	FF	FF	FF	FF	FF	FF	FF	FF	FF	FF	FF	
00000080	FF	FF	FF	FF	FF	FF	FF	FF	FF	FF	FF	FF	FF	FF	FF	FF	
00000090	FF	FF	FF	FF	FF	FF	FF	FF	FF	FF	FF	FF	FF	FF	FF	FF	
000000A0	FF	FF	FF	FF	FF	FF	FF	FF	FF	FF	FF	FF	FF	FF	FF	FF	
000000B0	FF	FF	FF	FF	FF	FF	FF	FF	FF	FF	FF	FF	FF	FF	FF	FF	
000000C0	FF	FF	FF	FF	FF	FF	FF	FF	FF	FF	FF	FF	FF	FF	FF	FF	
000000D0	FF	FF	FF	FF	FF	FF	FF	FF	FF	FF	FF	FF	FF	FF	FF	FF	
000000E0	FF	FF	FF	FF	FF	FF	FF	FF	FF	FF	FF	FF	FF	FF	FF	FF	
000000F0	FF	FF	FF	FF	FF	FF	FF	FF	FF	FF	FF	FF	FF	FF	FF	FF	
00000100	80	00	36	0	9												
00000110	FF	FF	FF	FF	FF	FF	FF	FF	FF	FF	FF	FF	FF	FF	FF	FF	
00000120	FF	FF	80	00	00	00	0A	02	0A	BF	40	AA	FF	FF	FF	FF		
00000130	FF	FF	FF	FF	FF	FF	FF	FF	FF	FF	FF	FF	FF	FF	FF	FF	
00000140	FF	FF	FF	FF	FF	FF	00	00	80	00	3A	C5	90	AA	FF	FF		
00000150	FF	FF	FF	FF	FF	FF	FF	FF	FF	FF	FF	FF	FF	FF	FF	FF	
00000160	FF	FF	FF	FF	FF	FF	FF	FF	FF	FF	80	00	00	00	00	AA	

[15:47:53:910] The chip is encrypted, please decrypt and then operate
[15:47:53:931] Performing decryption operation...
[15:48:09:803] Decryption success!
[15:48:09:840] Reading data...
[15:48:16:007] Read success!
[15:48:16:022] Power off...
[15:48:16:039] Operation completed!

100%

Decrypt successfully and save the data

Operating CG – 100

Read engine ECU data

Note: CG-100 full-featured support



9S12Das



AtmelDas



AirBag



ECU



BCM



UniProg



AMP

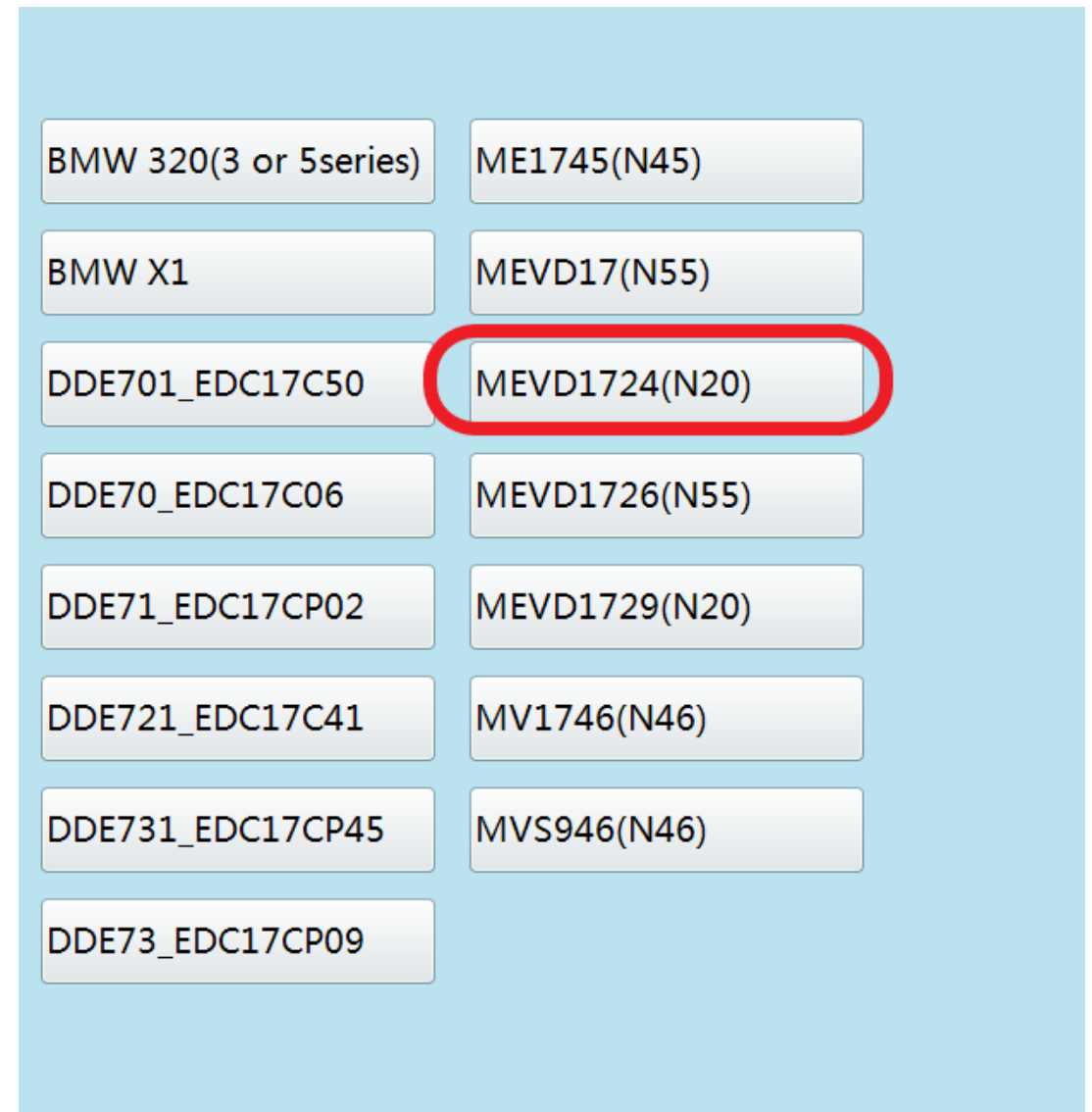
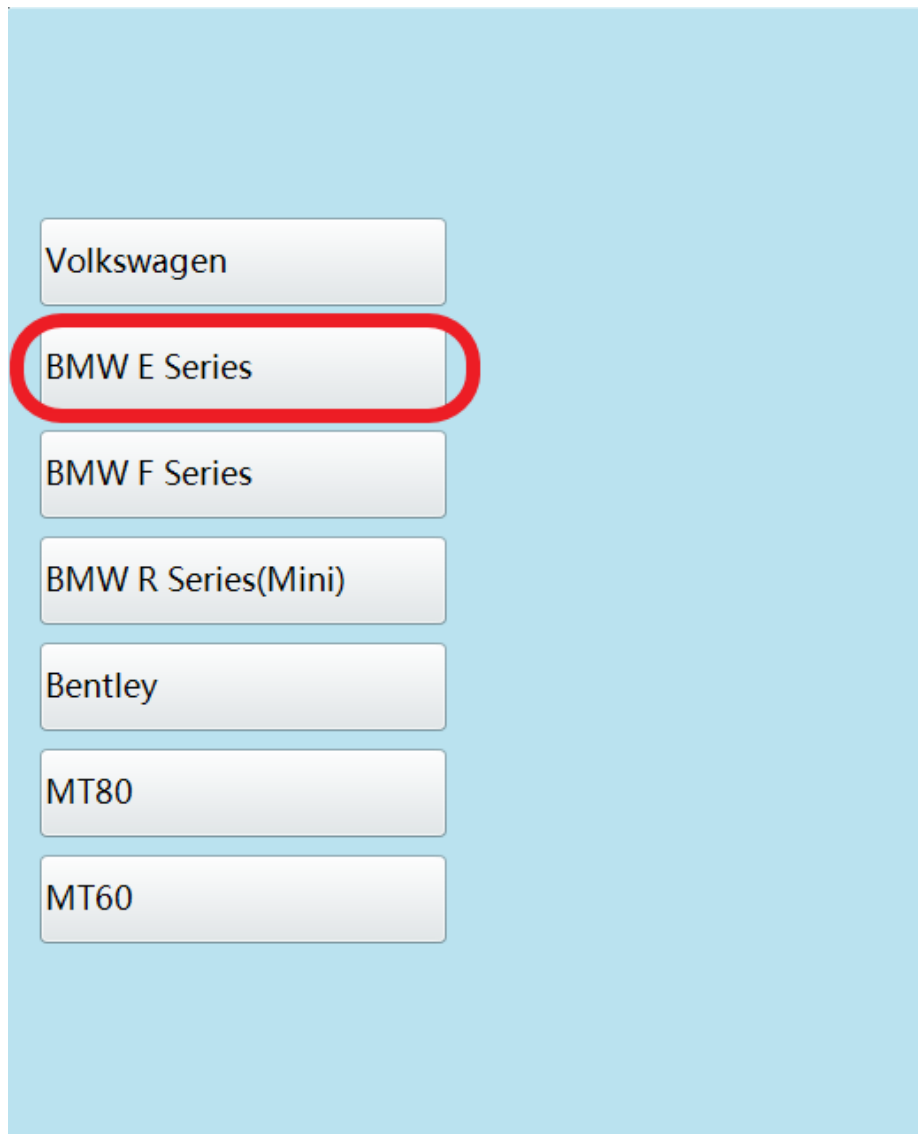


Setting



Other functions

Click to enter "ECU"



Click on the engine model option to enter the current vehicle

ISN:

VIN:

Please use the new adapter

Fullscreen

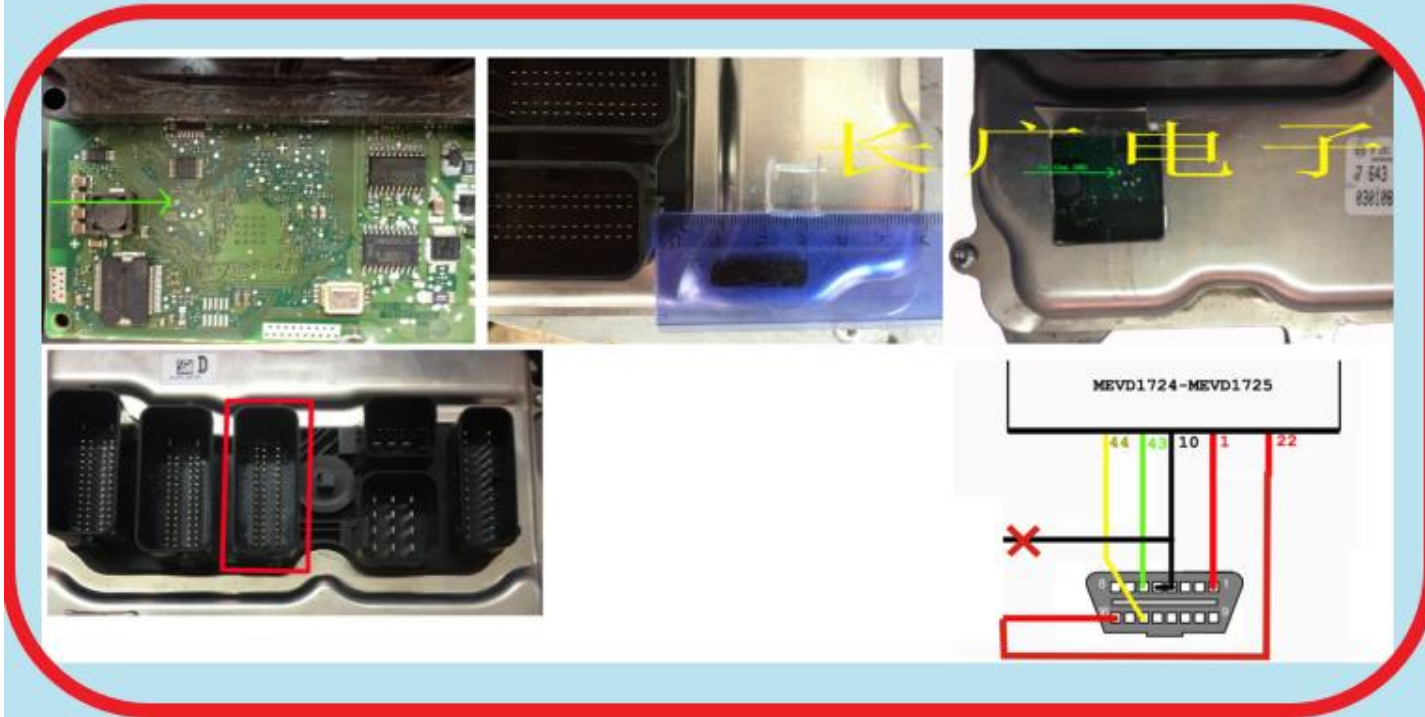
Return

Read EEPROM

Write EEPROM

Read FLASH

Write FLASH

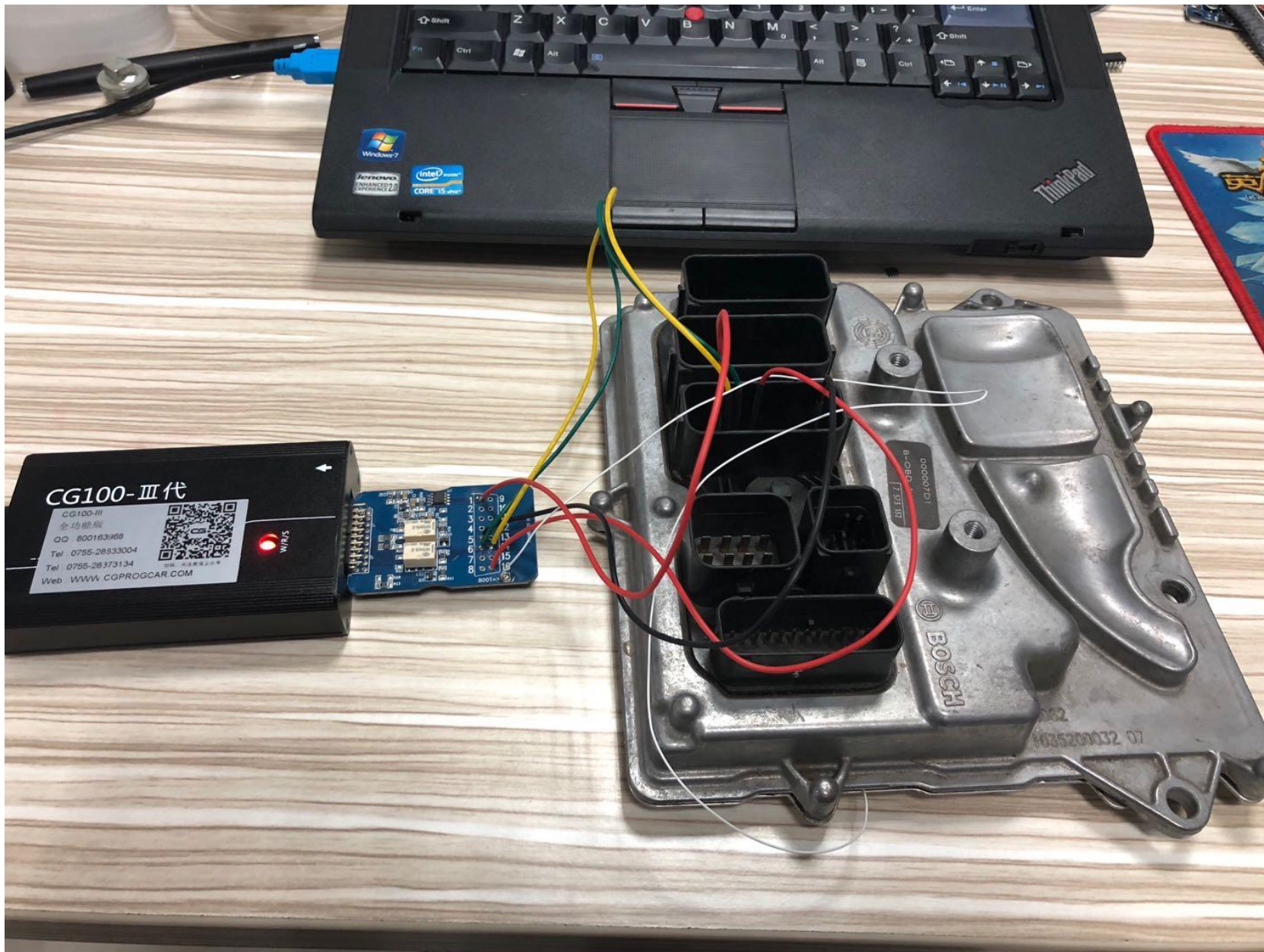


Picture:

CAN Diagram

Wiring Diagram 1

According to the software physical wiring diagram wiring



Engine module wiring

ISN:

VIN:

Please use the new adapter

Fullscreen

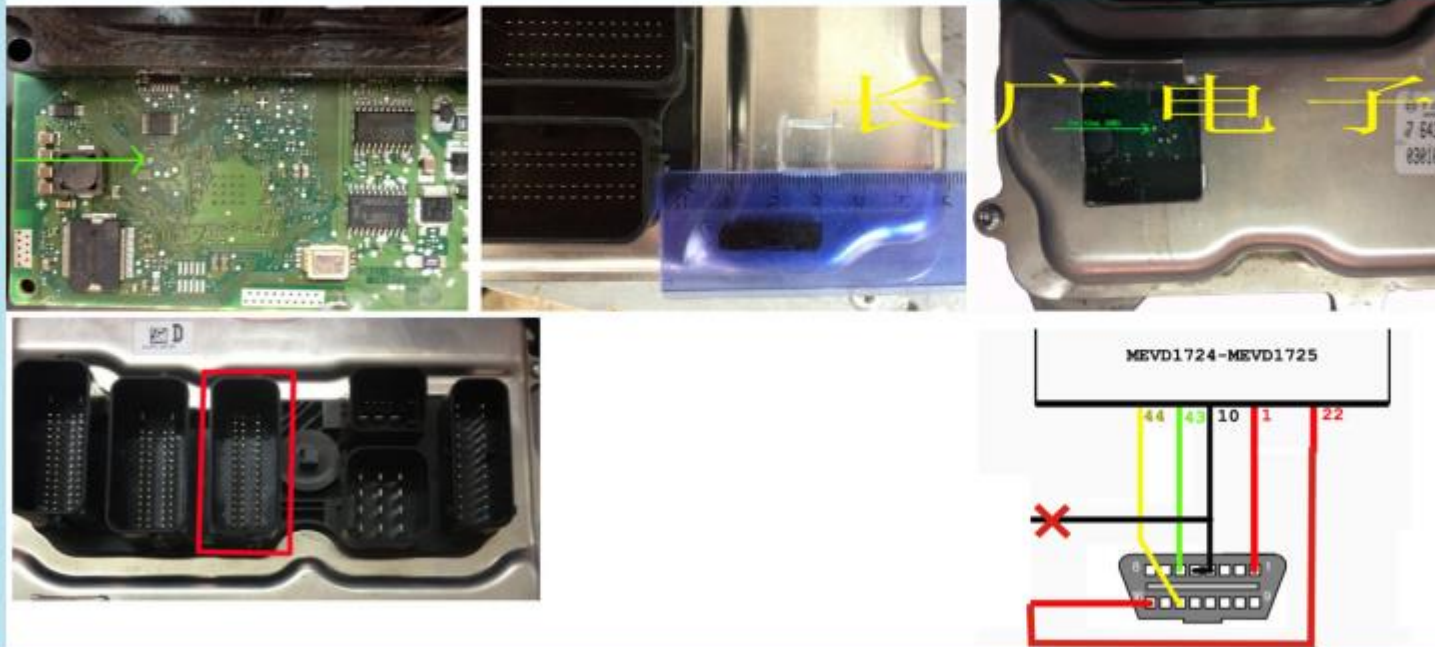
Return

Read EEPROM

Write EEPROM

Read FLASH

Write FLASH



Picture:

CAN Diagram

Wiring Diagram 1

Click read EEPROM

ISN:

VIN:

Please use the new adapter

Fullscreen Return

Read EEPROM

Write EEPROM

Read FLASH

Write FLASH

Picture:

CAN Diagram

Wiring Diagram 1

Device connecting

Reading data, please wait

Start initialize access data memory
Checking the status of the Flash
Reading chip data memory
Reading chip program memory
Is off the power supply
Power off is completed, t

CG100III

Reading succeeded

确定

Read successfully and save the data

ISN: 8E76BEDF12DEC25BE3A47A4AEFE254C6

VIN: SCBFN63W1EC094039

Please use the new adapter

Fullscreen

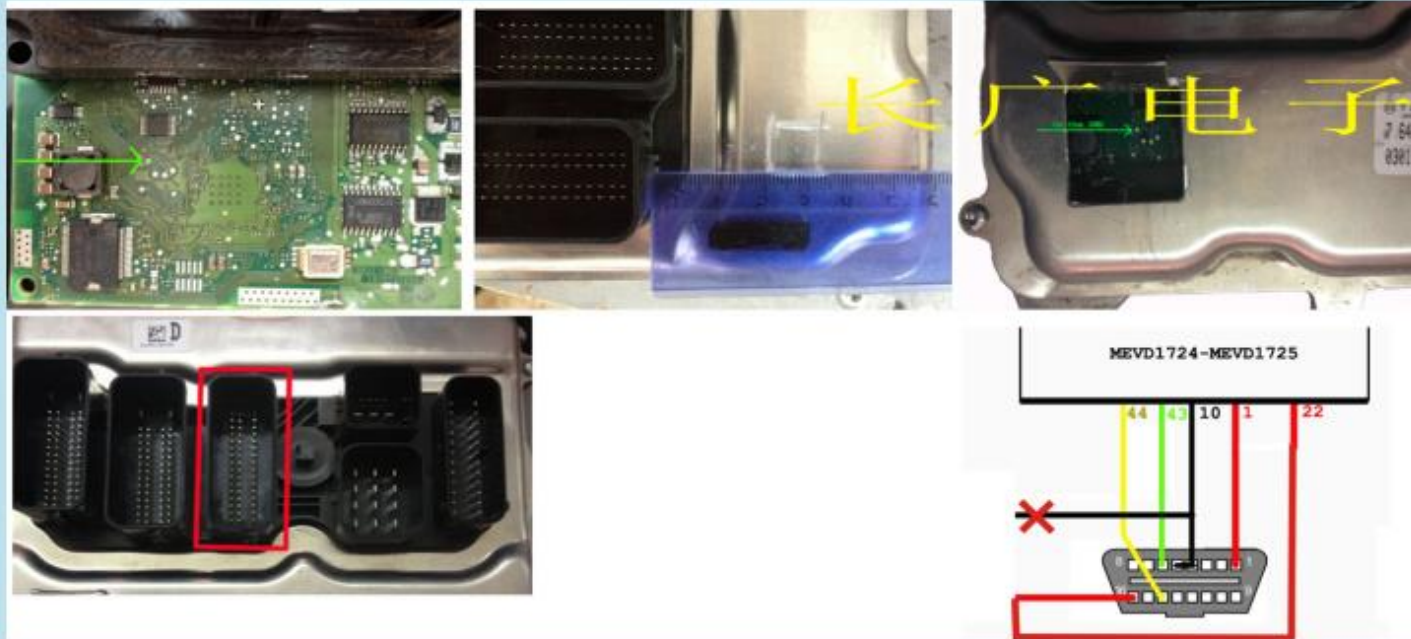
Return

Read EEPROM

Write EEPROM

Read FLASH

Write FLASH



Picture:

CAN Diagram

Wiring Diagram 1

Show ISN and VIN

Operating CG – DI
Match the new key



BMW OBD Key Match



BMW X Series Key Match



BMW ISN



FEM/BDC Key Match



CAS4 Key Match



BMW Enable/Disable key



BMW F Series Program

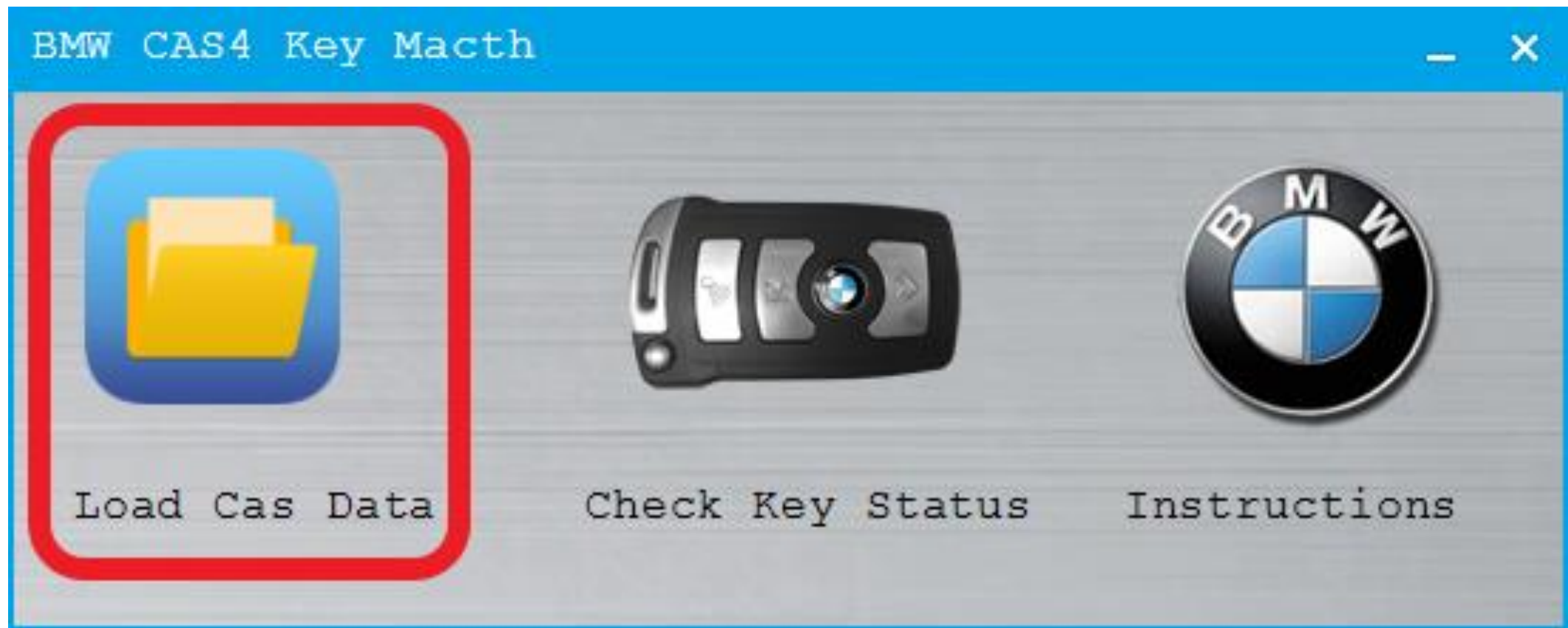


BMW F Series Coding

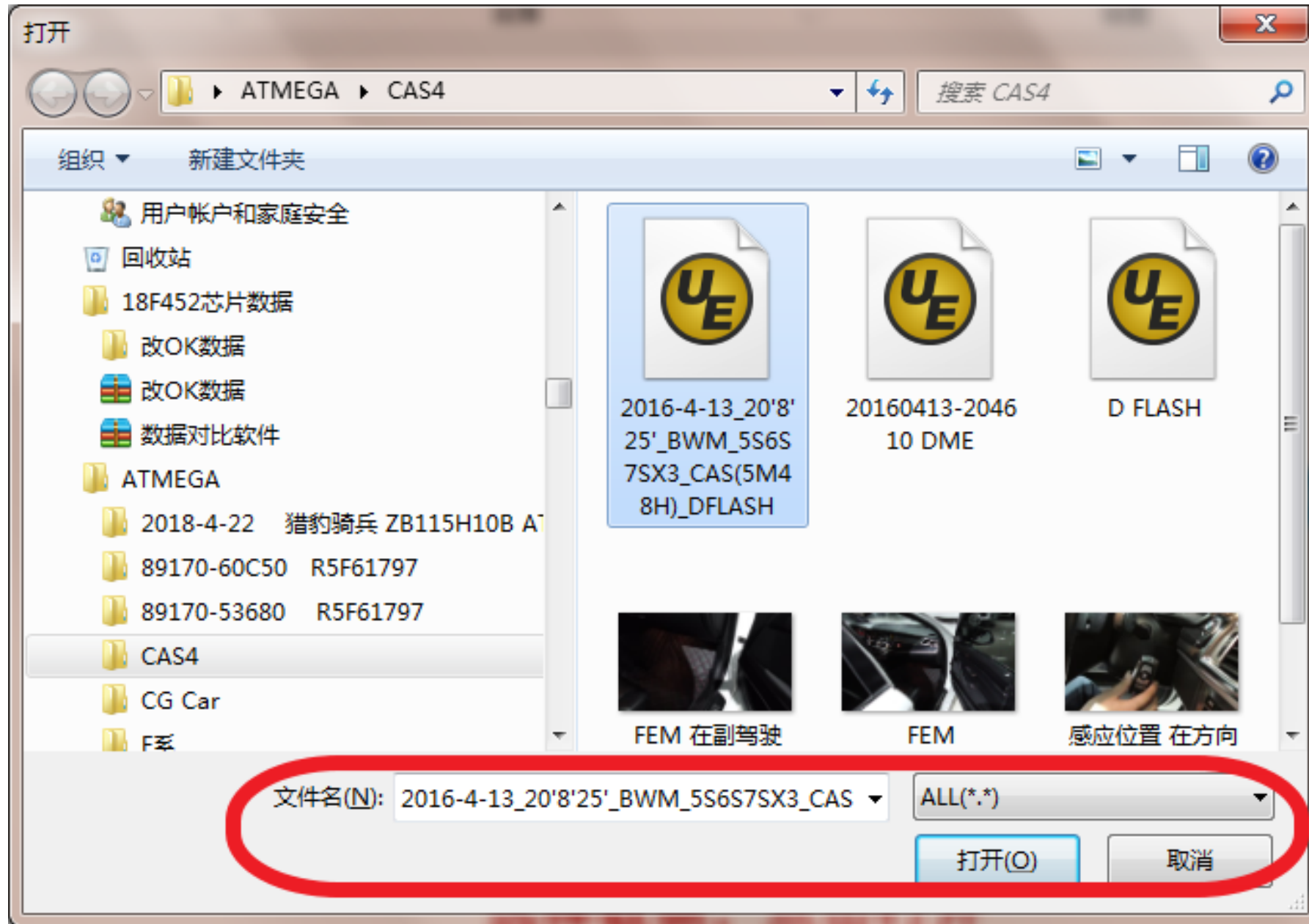


EGS ISN

Click on the "CAS4 key match"



Load CAS 4+ data read by CG-Pro



Select data and click open

VIN LBV5S3103ESJ15958

CAS Version: CAS4+

Key Number	Key ID	Key Status
<input type="radio"/> Key1	4D76BE33	Used
<input type="radio"/> Key2	9071BE33	Used
<input type="radio"/> Key3	FFFFFFFF	Unuse
<input type="radio"/> Key4	FFFFFFFF	Unuse
<input type="radio"/> Key5	FFFFFFFF	Unuse
<input type="radio"/> Key6	FFFFFFFF	Unuse
<input type="radio"/> Key7	FFFFFFFF	Unuse
<input type="radio"/> Key8	FFFFFFFF	Unuse
<input type="radio"/> Key9	FFFFFFFF	Unuse
<input type="radio"/> Key10	FFFFFFFF	Unuse

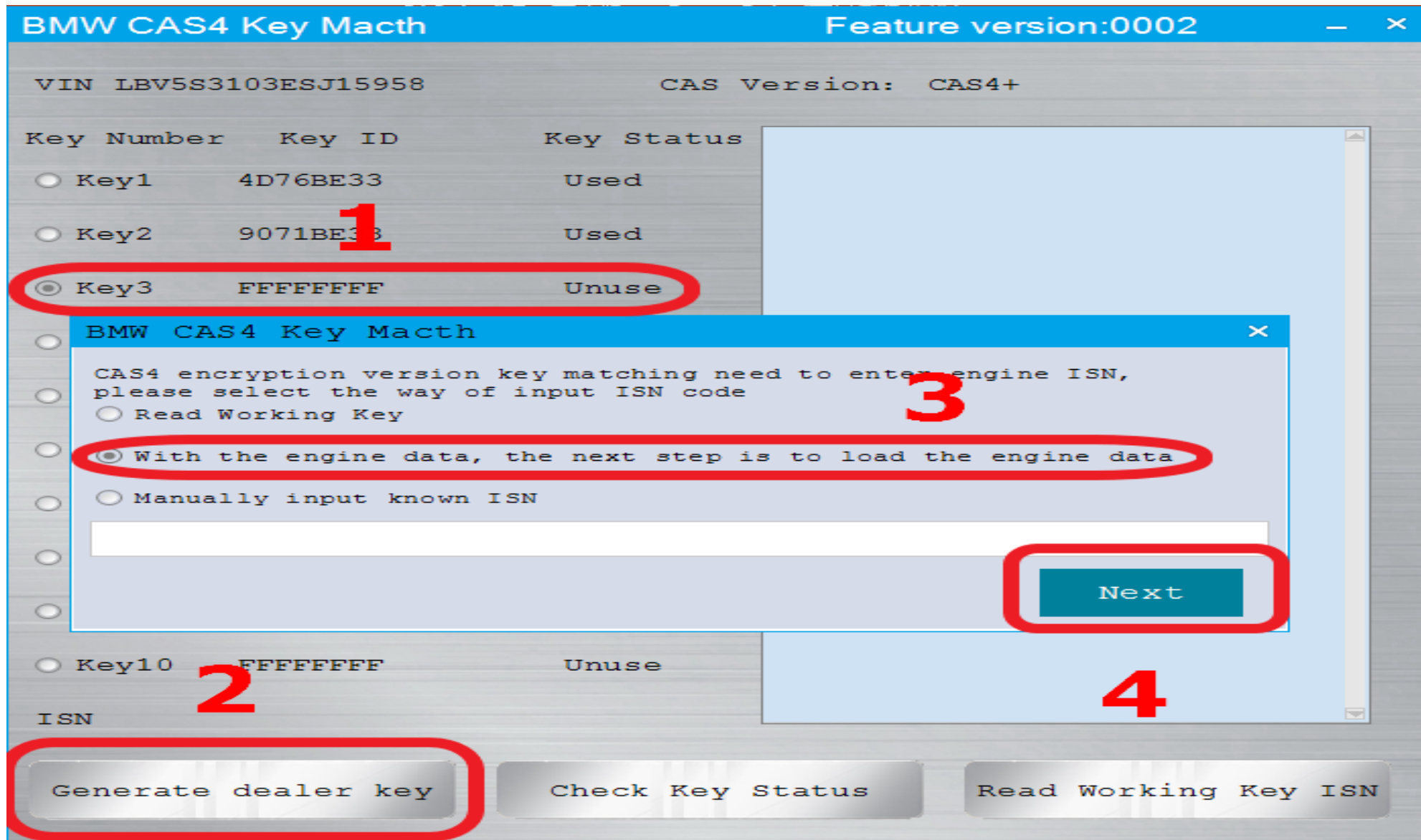
ISN

Generate dealer key

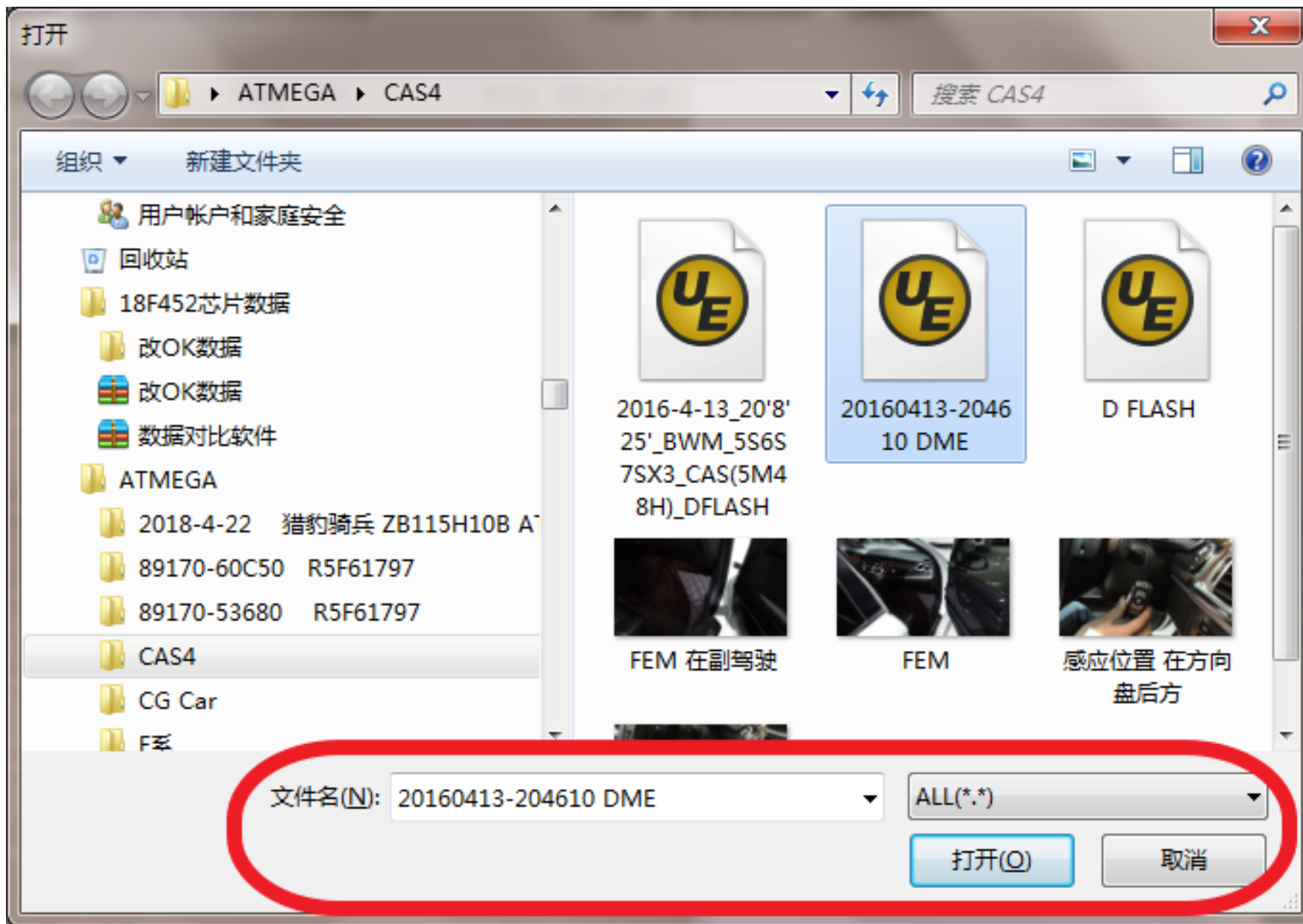
Check Key Status

Read Working Key ISN

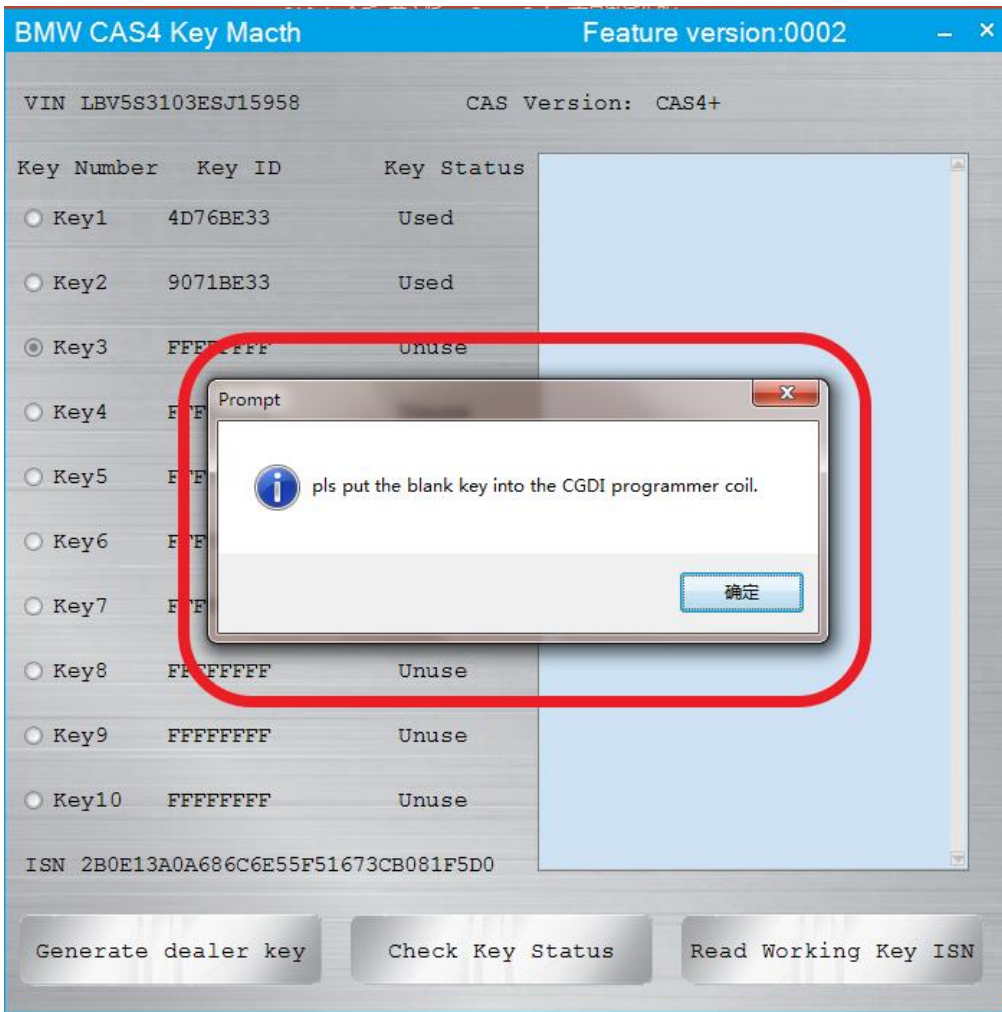
Display relevant information



Select the key position that needs to be configured, click to generate the dealer key, and click on the engine data to determine the next step



Choose the engine data with CG-100



Blank key

BMW CAS4 Key Macth Feature version:0002

VIN LBV5S3103ESJ15958 CAS Version: CAS4+

Key Number	Key ID	Key Status
<input type="radio"/> Key1	4D76BE33	Used
<input type="radio"/> Key2	9071BE33	Used
<input checked="" type="radio"/> Key3	FFFFFFFF	Unuse
<input type="radio"/> Key4	FFFFFFFF	Unuse
<input type="radio"/> Key5	FFFFFFFF	Unuse
<input type="radio"/> Key6	FFFFFFFF	Unuse
<input type="radio"/> Key7	FFFFFFFF	Unuse
<input type="radio"/> Key8	FFFFFFFF	Unuse
<input type="radio"/> Key9	FFFFFFFF	Unuse
<input type="radio"/> Key10	FFFFFFFF	Unuse

ISN 2B0E13A0A686C6E55F51673CB081F5D0

The key is being program
program key successful

New key programming success



After learning, it can be used normally