

How to update Cummins INSITE 7.6.1 and 7.6.2

INSITE 7.6.1, and 7.6.2 Software Download at:

<https://insite.cummins.com/insite/downloads/index.html>

Note: First download and upgrade INSITE 7.6.1 then INSITE 7.6.2.

General method to download and update as follows:

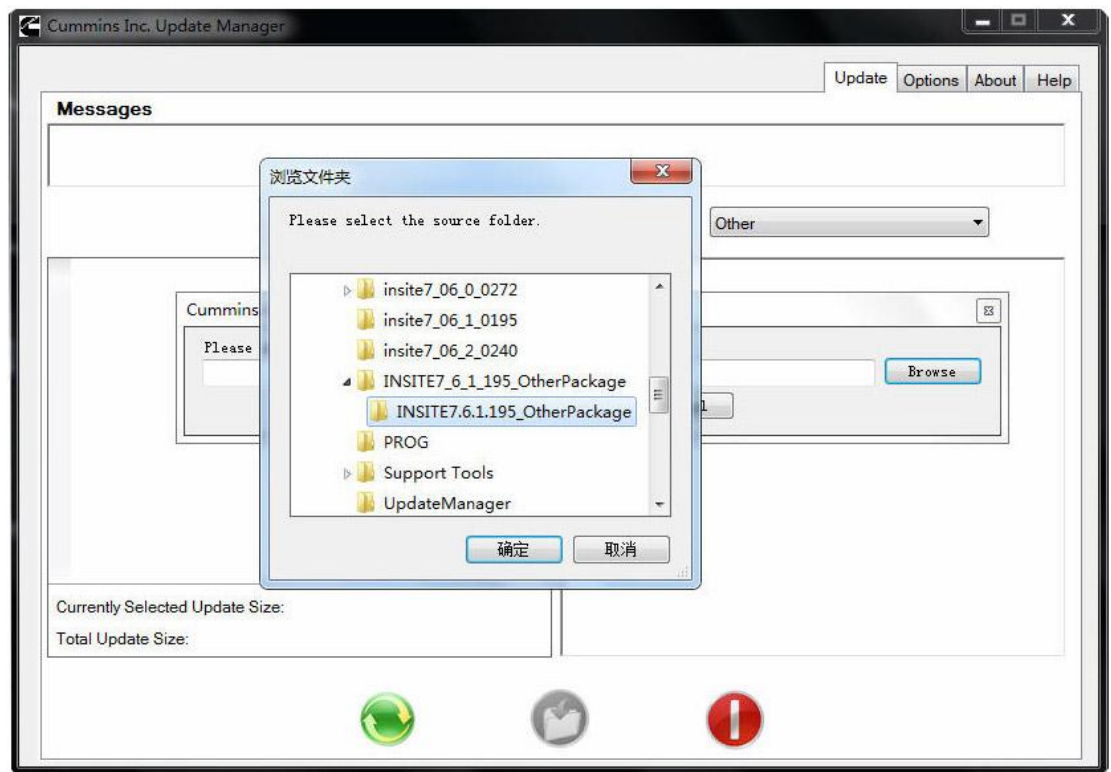
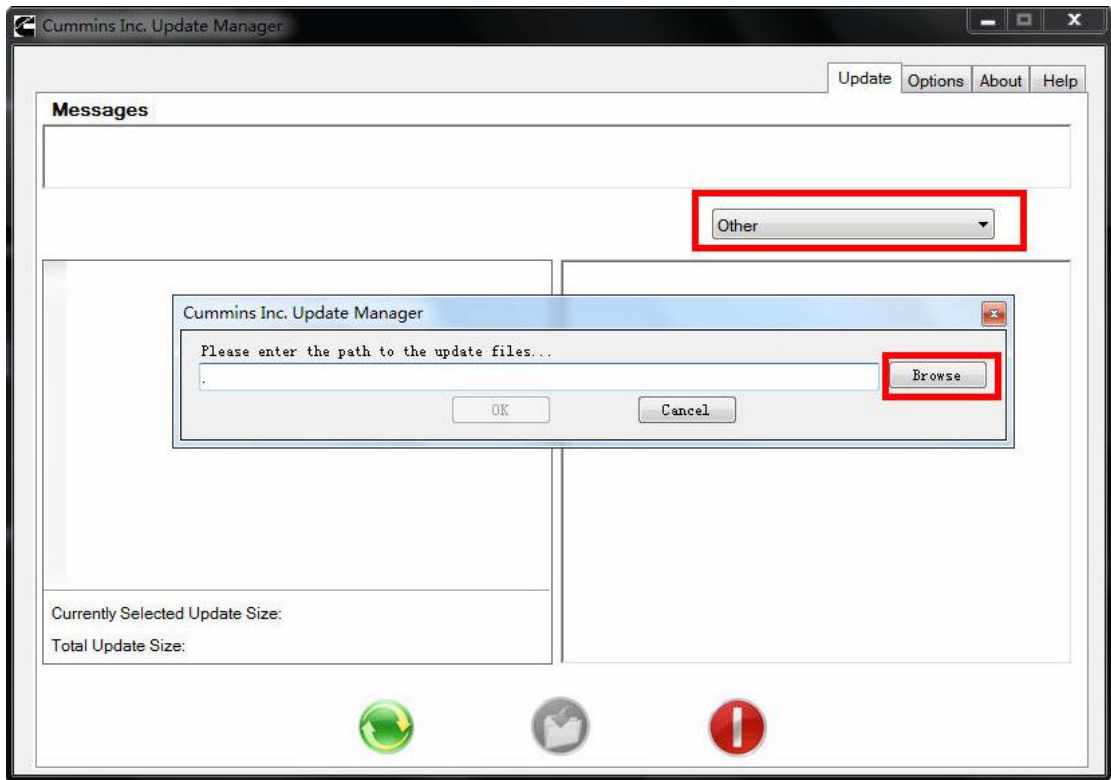
1. Download zip file from link above
2. Extract contents to network location.
3. Share location on the network.
4. Point Update Manager to look at that location for updates

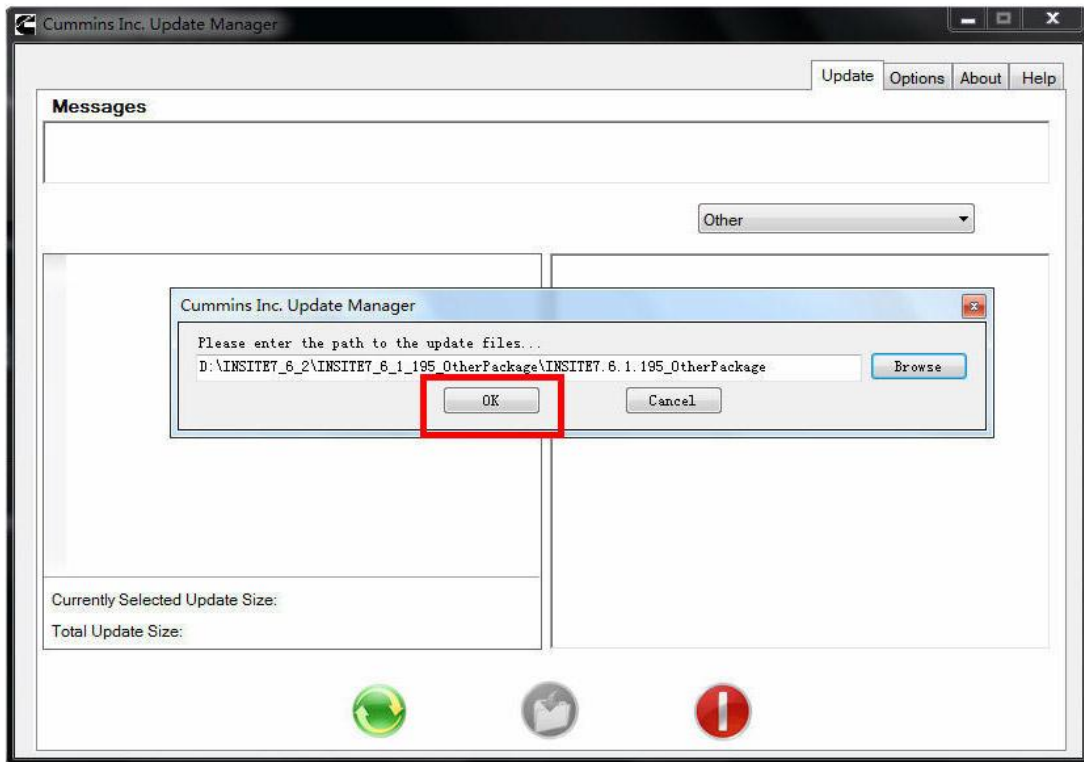
Step – by – step operation

1. Choose Cummins Inc. Update Manager

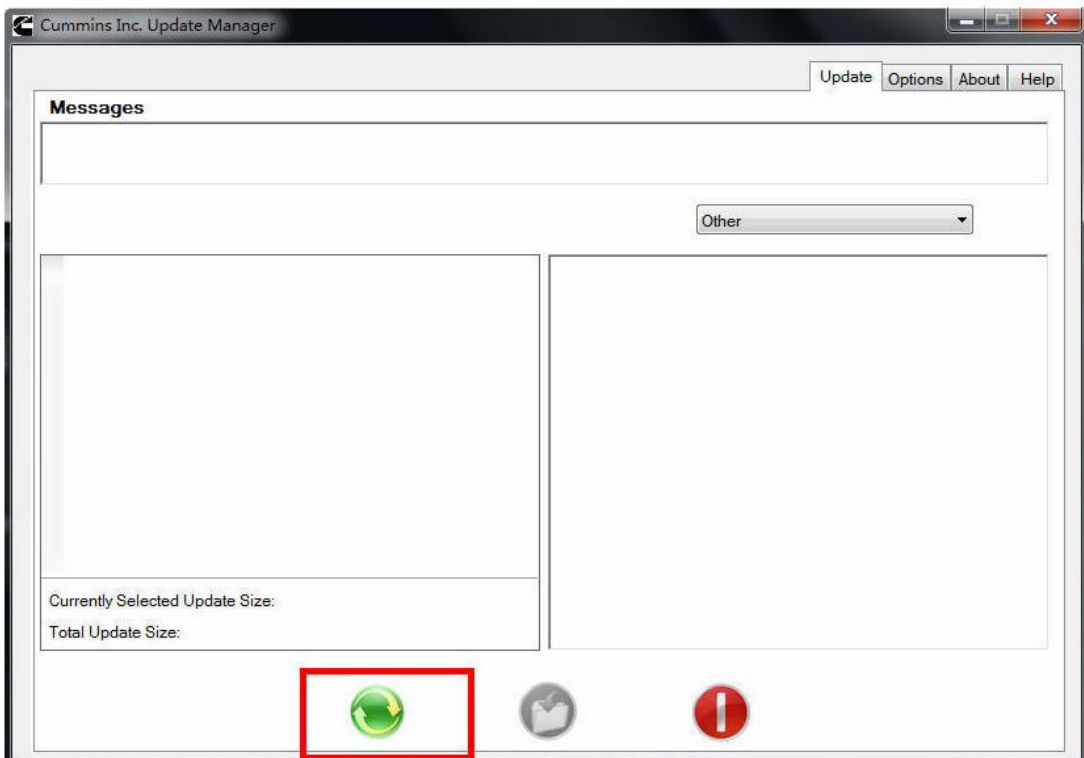


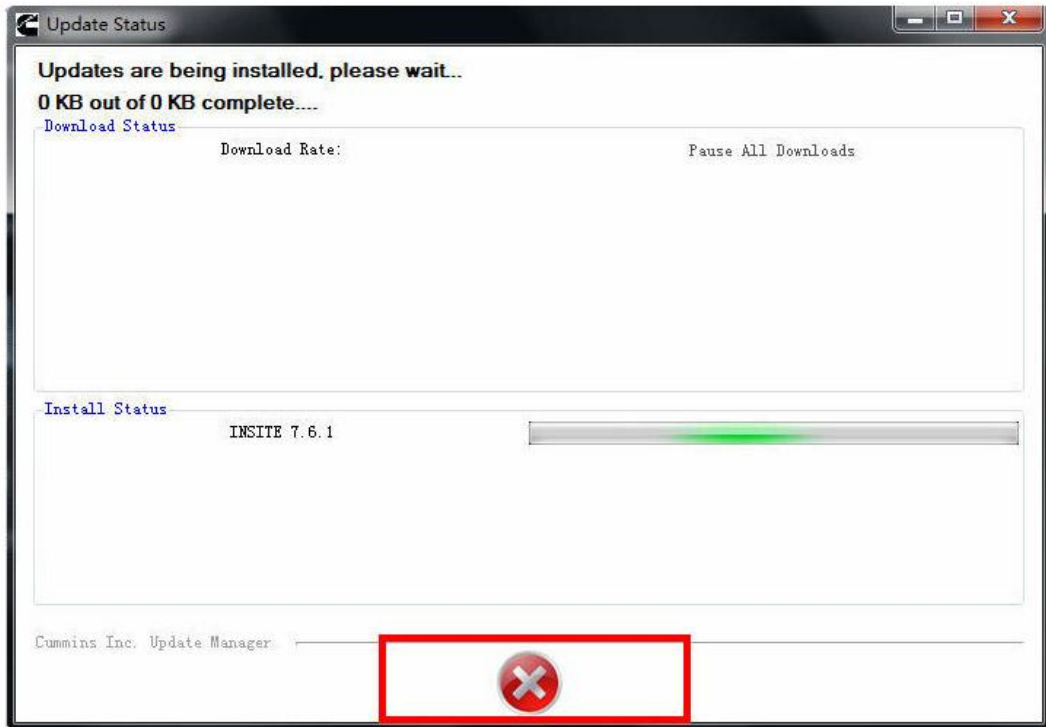
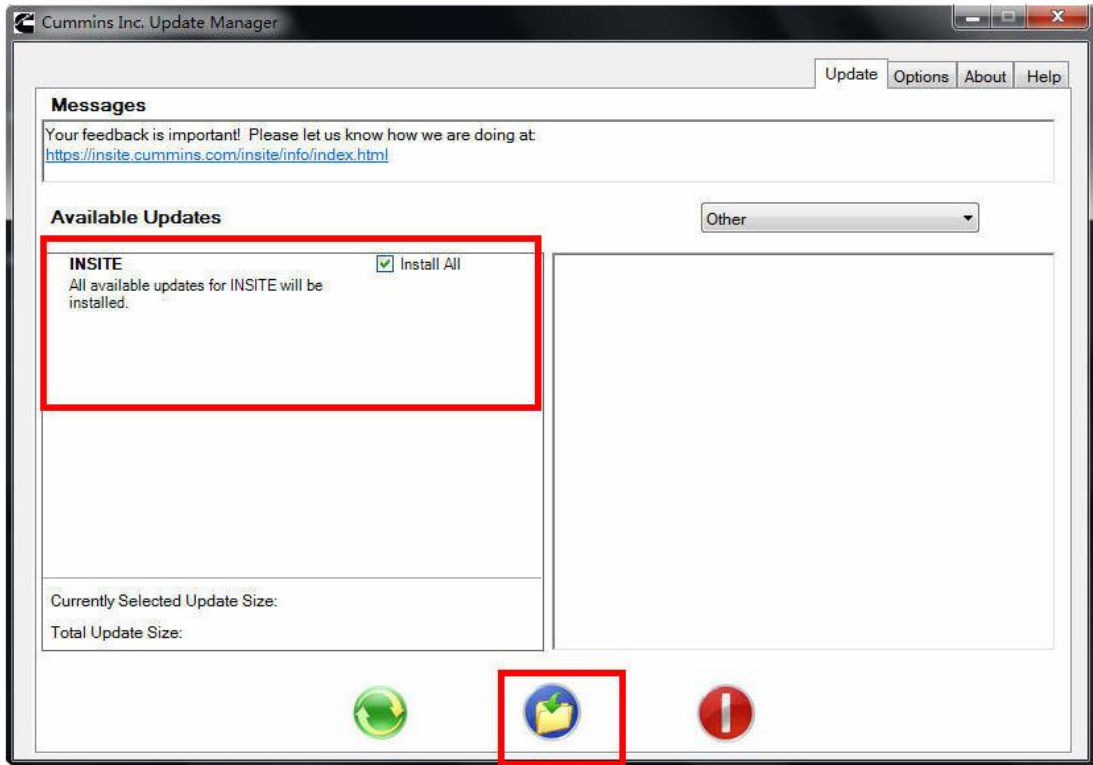
2. Browse "INSITE 7.6.1.195_OtherPackage" to update INSITE 7.6.1.

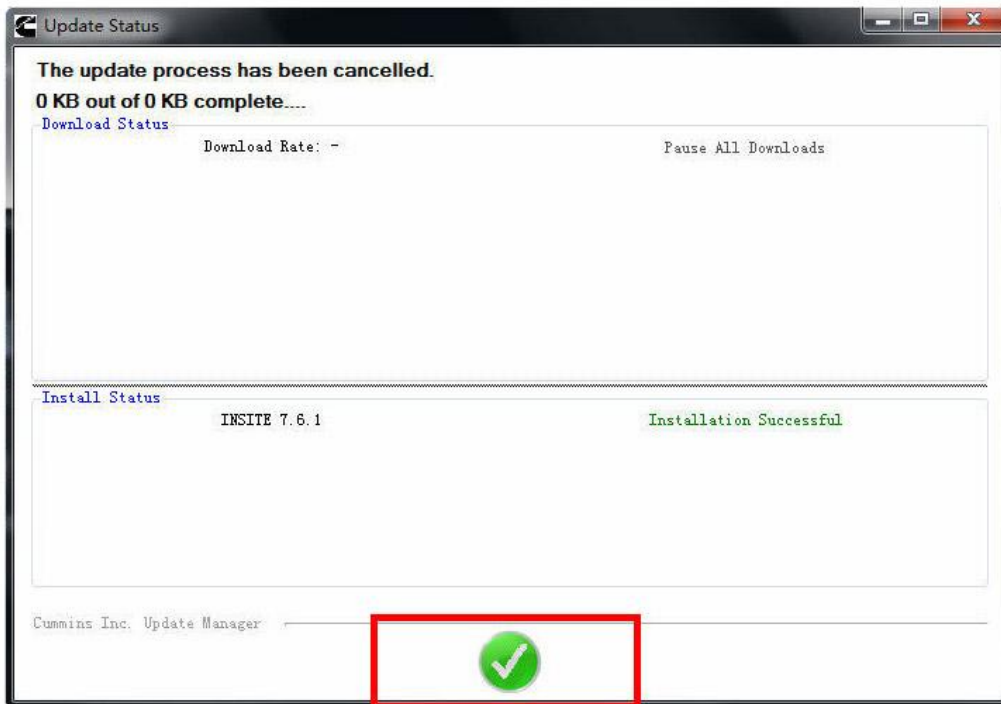




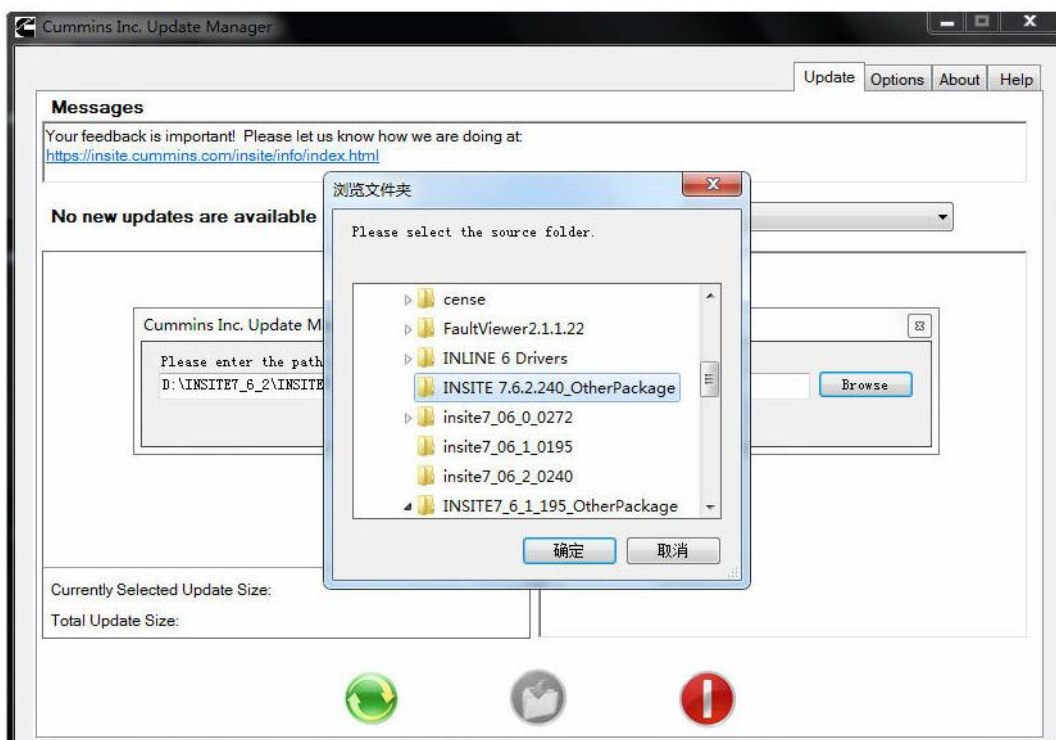
3. Install INSITE 7.6.1 update by following steps.

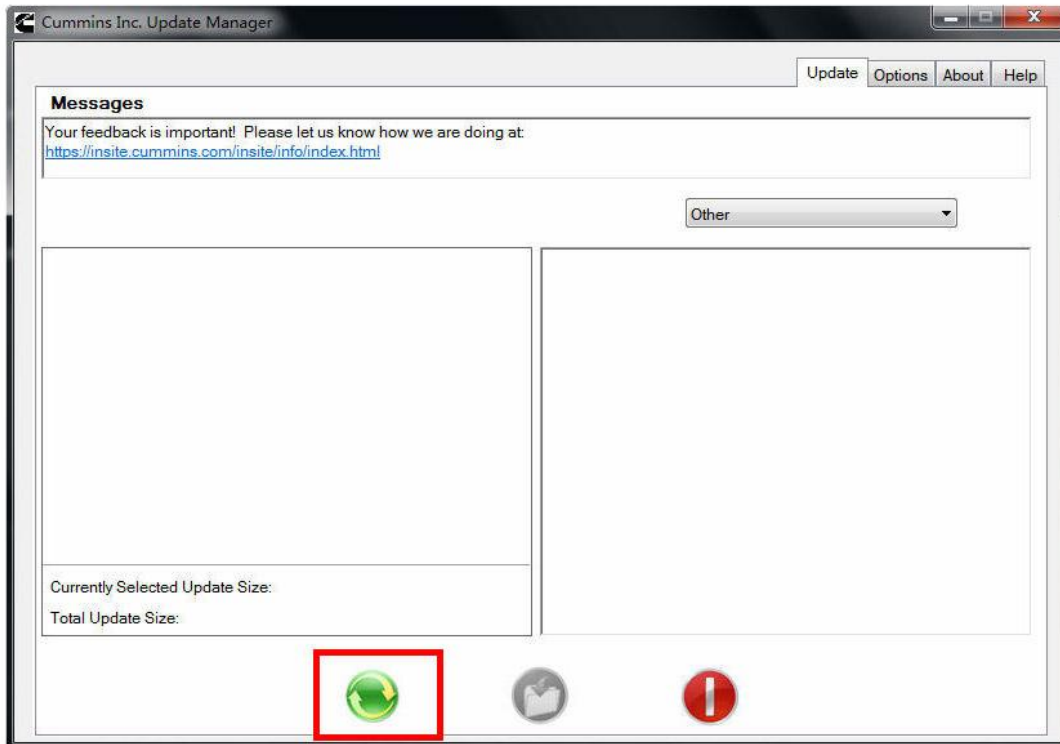
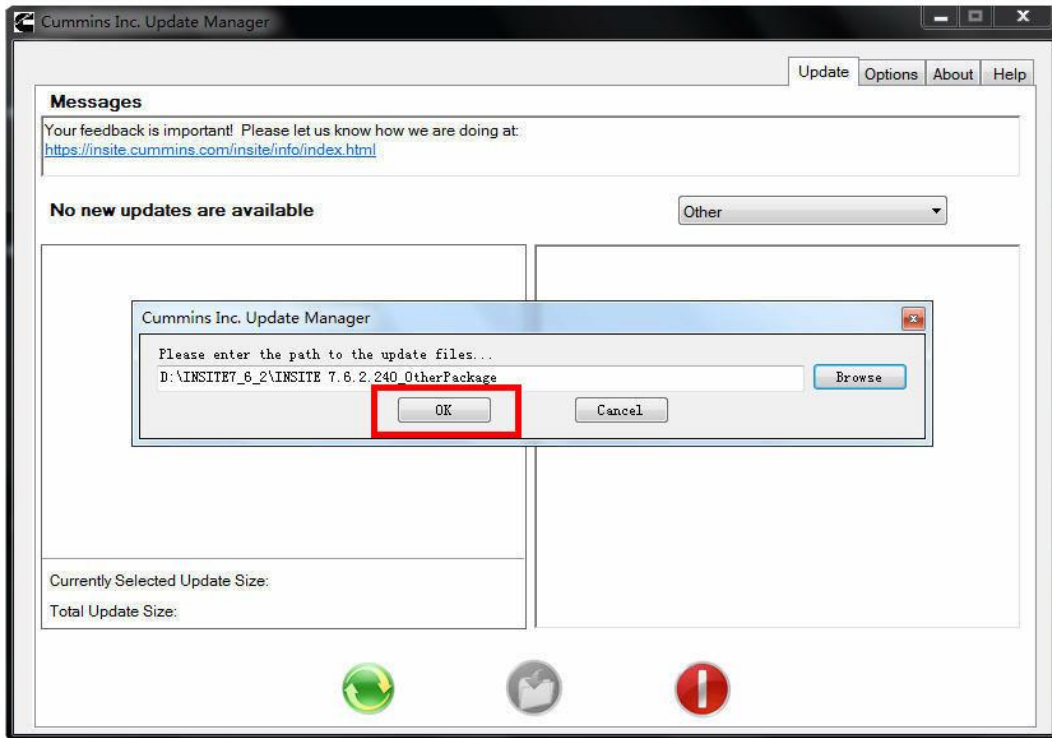




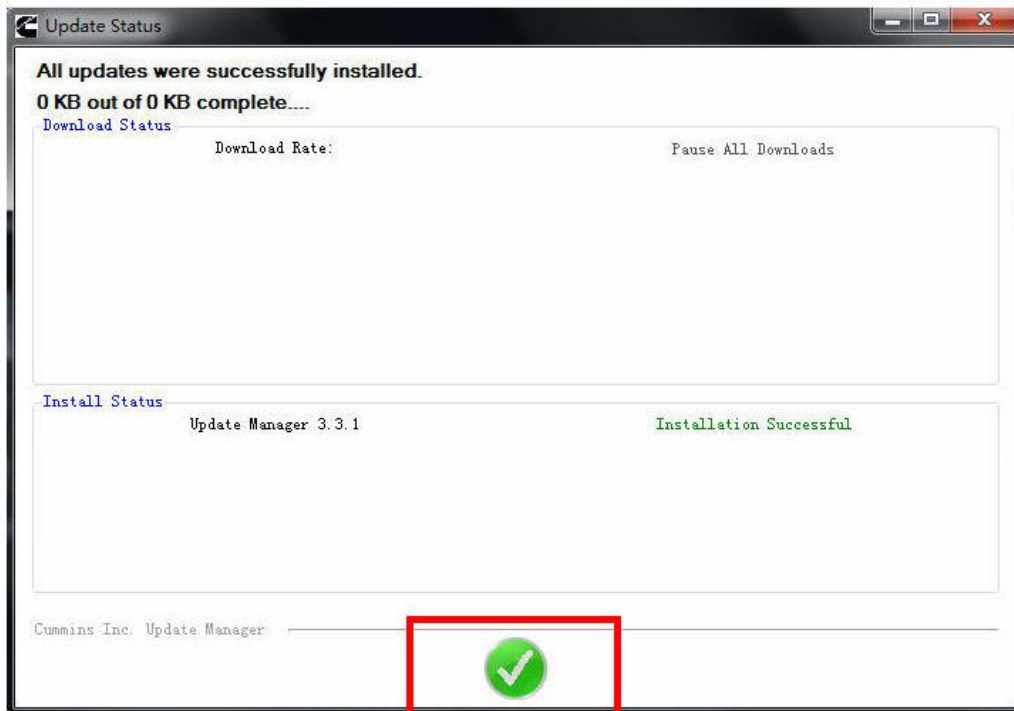
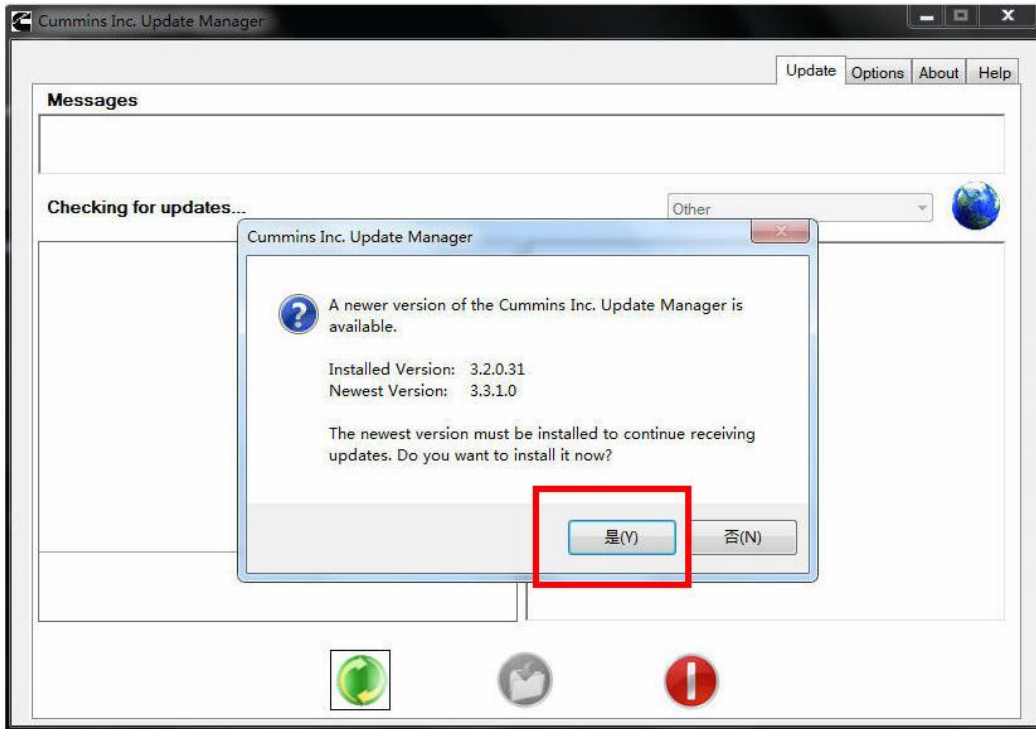


4. Choose "INSITE 7.6.2.240_OtherPackage" to update INSITE 7.67.2

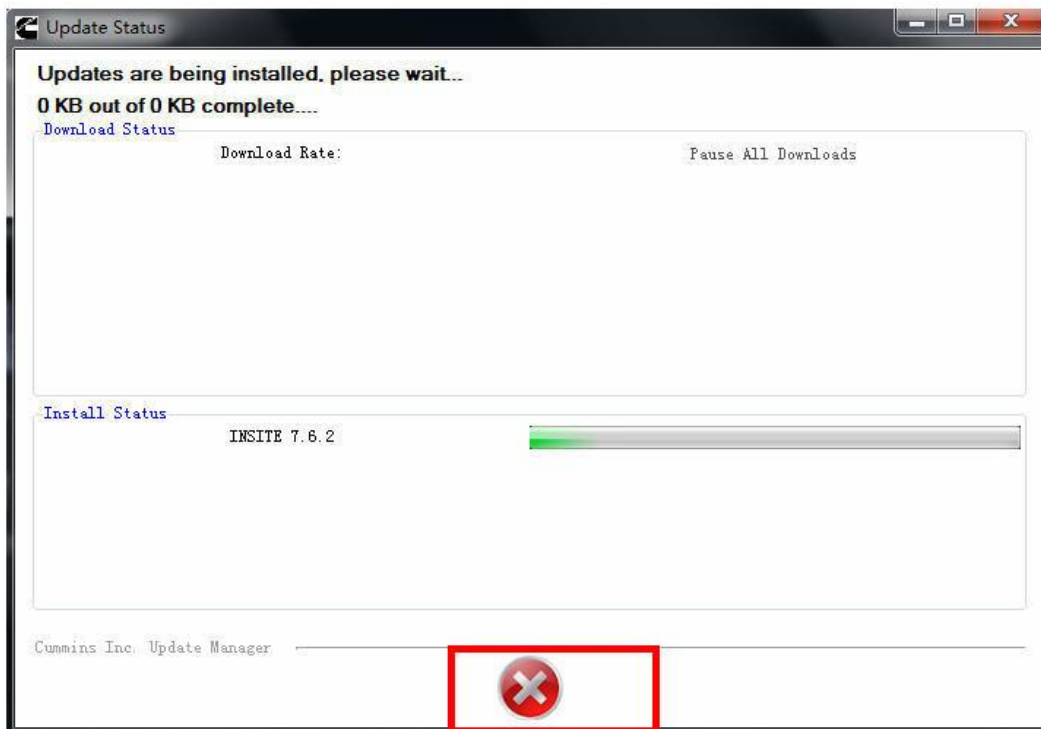
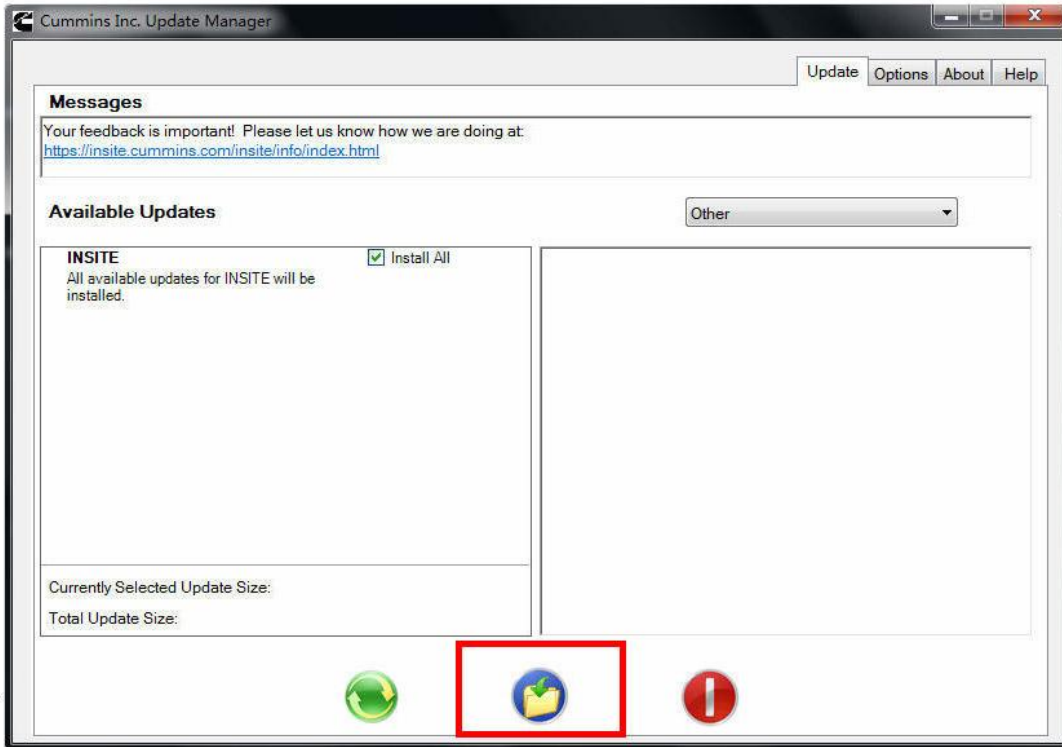


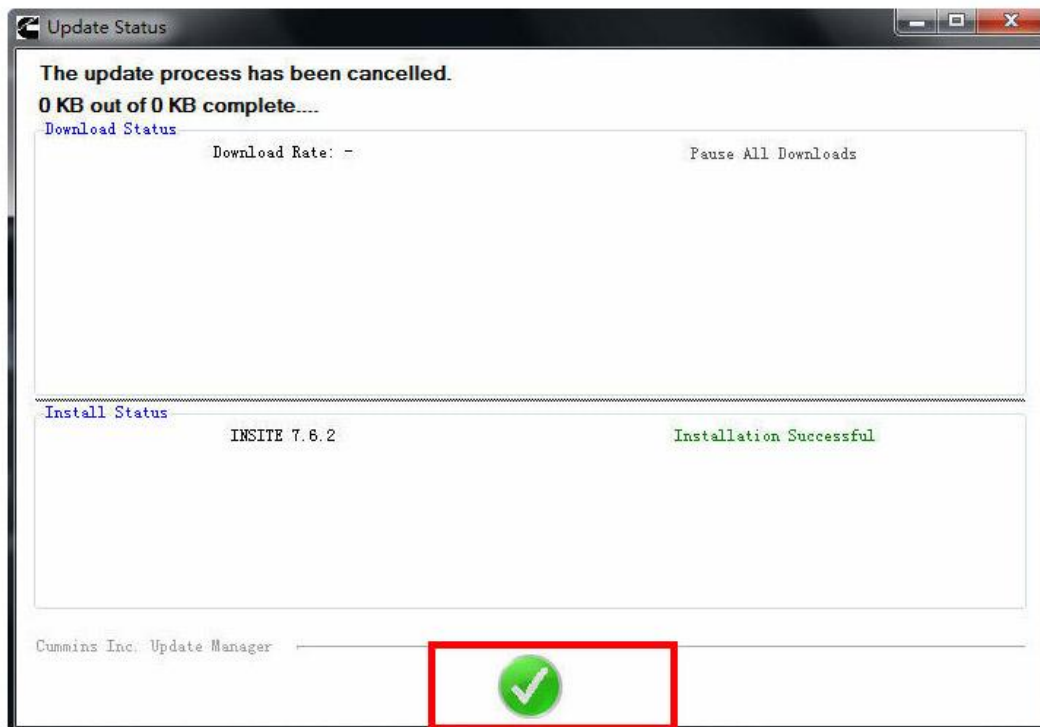
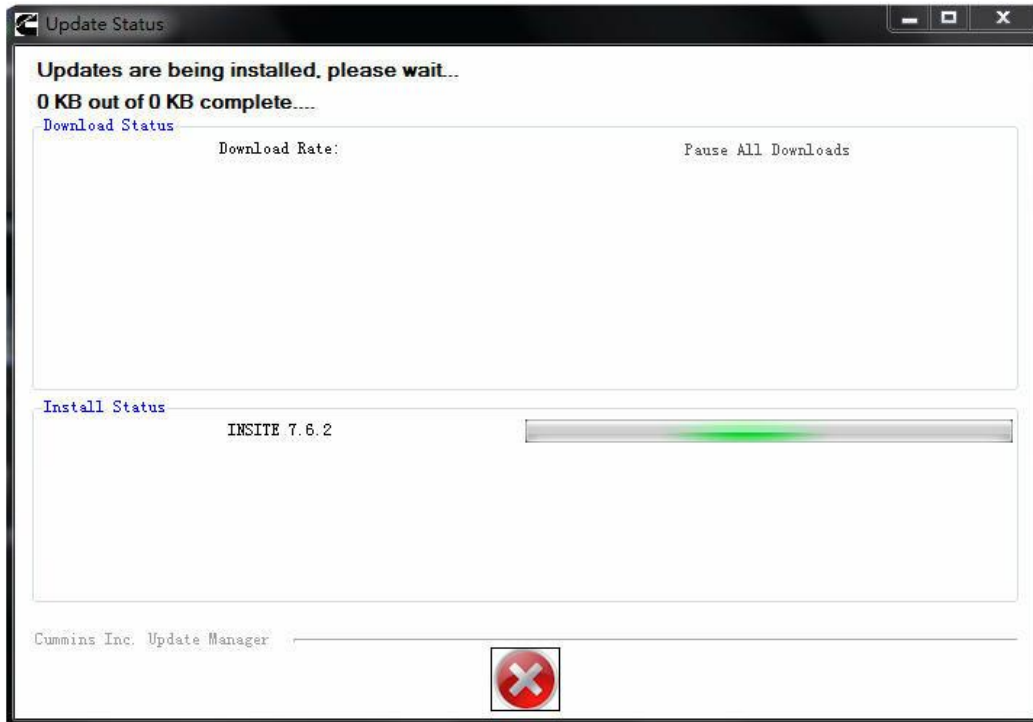


5. Install Cummins Inc. Update Manager V3.3.1.0



6. Click the folder icon to go on update INSITE 7.6.2.





7. INSITE 7.6.2 is successfully installed.