

# MVCI Cable User Manual



X-Horse Electronics Co., Ltd.

## Table of Contents

1.	Safety Precautions and Warnings .....	3
2.	General Information.....	4
3.	MVCI Overview.....	5
3.1.	Tool Description .....	5
3.2.	Specifications.....	6
3.3.	Accessories Included.....	7
3.4.	System Requirements .....	7
3.5.	Features.....	8
4.	Installation.....	9
5.	MVCI Firmware Update Tool .....	12
5.1.	Device Information.....	12
5.2.	Firmware Update Online.....	13
5.3.	Firmware Update from File .....	14
5.4.	Feedback .....	15
5.5.	Language.....	16
6.	Warranty and Service .....	17
6.1.	Limited One Year Warranty .....	17
6.2.	Service Procedures .....	17

# 1. Safety Precautions and Warnings

To prevent personal injury or damage to vehicles and/or the tool, read this instruction manual first and observe the following safety precautions at a minimum whenever working on a vehicle:

- Always perform automotive testing in a safe environment.
- Wear safety eye protection that meets ANSI standards.
- Keep clothing, hair, hands, tools, test equipment, etc. away from all moving or hot engine parts.
- Operate the vehicle in a well ventilated work area: Exhaust gases are poisonous.
- Put blocks in front of the drive wheels and never leave the vehicle unattended while running tests.
- Use extreme caution when working around the ignition coil, distributor cap, ignition wires and spark plugs. These components create hazardous voltages when the engine is running.
- Put the transmission in PARK (for automatic transmission) or NEUTRAL (for manual transmission) and make sure the parking brake is engaged.
- Keep a fire extinguisher suitable for gasoline/chemical/electrical fires nearby.
- Don't connect or disconnect any test equipment while the ignition is on or the engine is running.
- Keep the tool dry, clean, free from oil/water or grease. Use a mild detergent on a clean cloth to clean the outside of the scan tool, when necessary.

## 2. General Information

**Thank you for choosing MVCI Automotive Diagnostic Tool.**

This manual includes the use of equipment notes, please read this manual carefully before use so that you can correctly use it.

### **X-Horse Electronics, 2010**

All rights reserved. No part of this publication may be reproduced, stored in a retrieval system, or transmitted, in any form, or by any means, mechanical, electronic, photocopying, recording, or otherwise, without the prior written permission of X-Horse Electronics.

All copyright and trademarks acknowledged.

No patent liability is assumed with respect to the use of the information contained herein. Moreover, because X-Horse Electronics is constantly striving to improve its high-quality products, the information contained in this manual is subject to change without notice. Every precaution has been taken in the preparation of this manual. Nevertheless, X-Horse Electronics assumes no responsibility for errors or omissions. Neither is any liability assumed for damages resulting from the use of the information contained in this publication.

## 3. MVCI Overview

### 3.1. Tool Description



### 3.2. Specifications

ITEM	Description		
Operating Temperature	-20 to 70 °C   ( -4 to 158 °F )		
Storage Temperature	-40 to 85 °C   ( -40 to 185 °F )		
Diagnostic Interface	16 PIN		
USB Interface	USB 2.0		
Power	DC 5 V - 36 V		
Consumption	0.3 W		
Dimensions	Length 76 mm(2.99")	Width 43 mm(1.69")	Height 19 mm(0.75")
Net Weight	62 g		
Gross Weight	103 g		

### 3.3. Accessories Included

ITEM	Description
User Manual	Instructions on tool operations.
CD	Includes user manual, drivers, and etc.
OBD II cable	Communicates between tool and vehicle
USB cable	Communicates between tool and PC/Laptop
Carry case	A nylon case to store the tool when not in use.

### 3.4. System Requirements

#### PC/Laptop Minimum Specification

	Minimum Specification	Recommended Specification
CPU	Pentium 3/1GHz or above	Pentium 4/1.6GHz or above
Memory(RAM)	256M or above	512M or above
HDD	40G or above	60G or above
Display	800 x 600 or above	1024 x 768 or above
OS	Win98/2000/XP/Vista	WinXP
Port	USB	USB

### 3.5. Features

- Support Toyota TIS OEM diagnostic software
- Supports Diagnostics and Active tests
- Supports most 1996 and newer vehicles with OBDII/DLC3 diagnostics
- Easy to install and carry
- **Update firmware online**
- **Cost-effective**
- High performance with ARM chip inside
- Status LED

### Supported Protocols

- K-Line ISO 9141
- KWP 2000 ISO 14230-4
- CAN 2.0B ISO 11898
- CAN ISO 15765-4

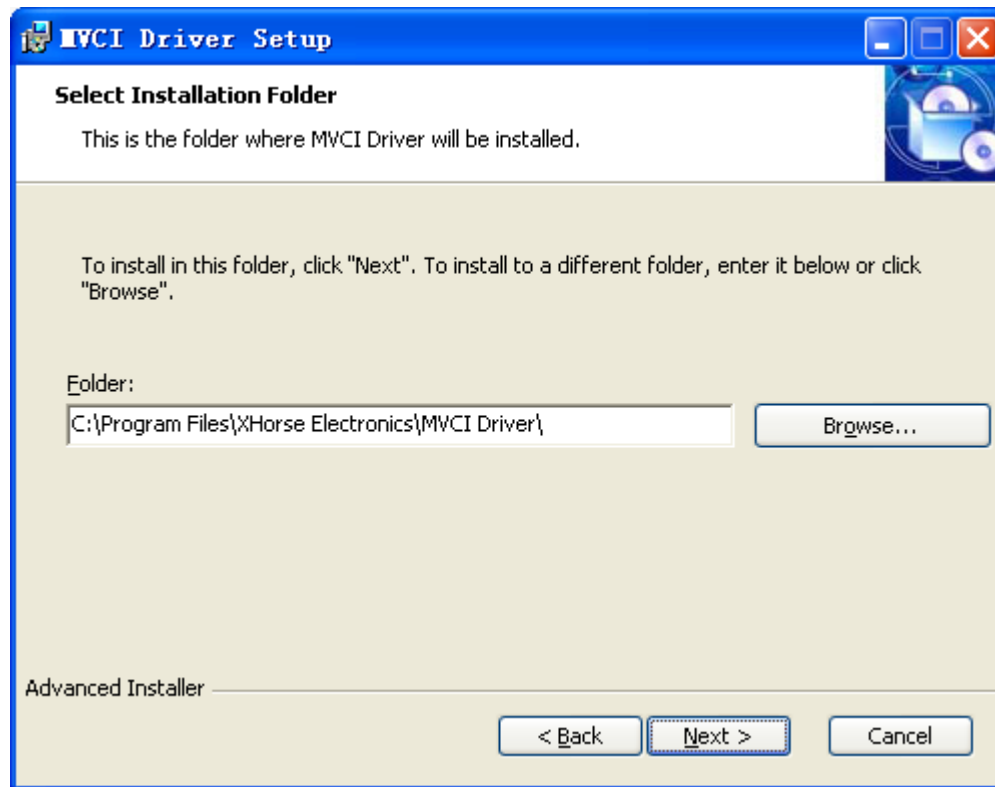


## 4. Installation

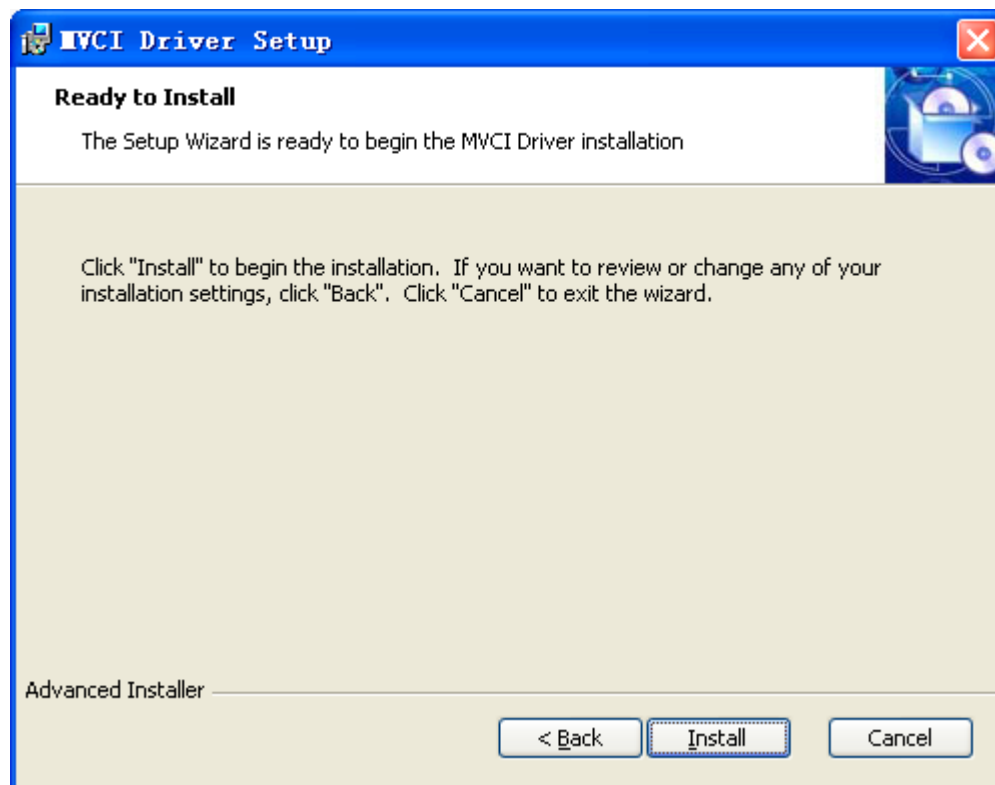
1) Click Next



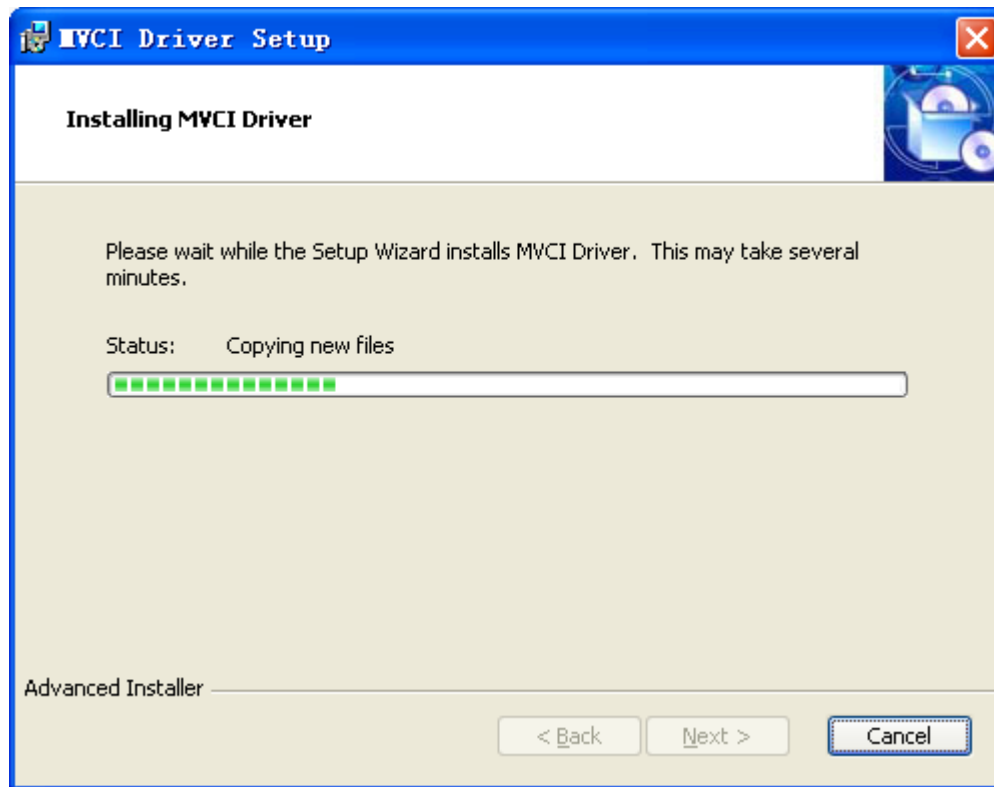
2) Select installation folder, then click Next



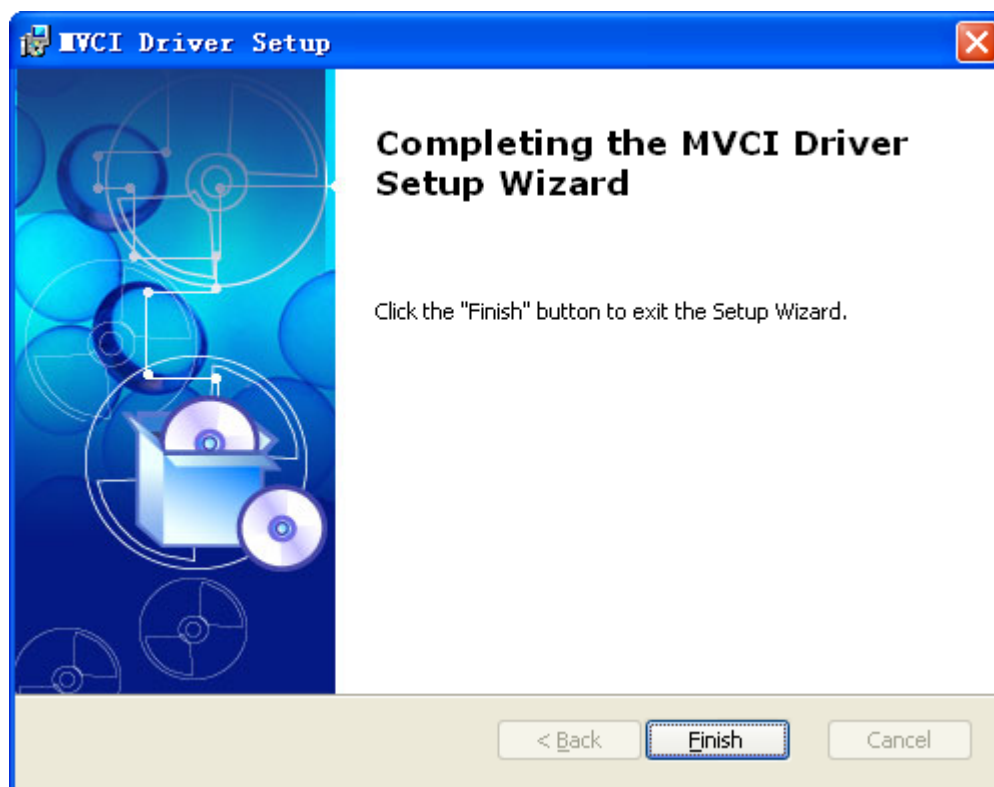
3) Click Install to begin installation



## 4) Installing...



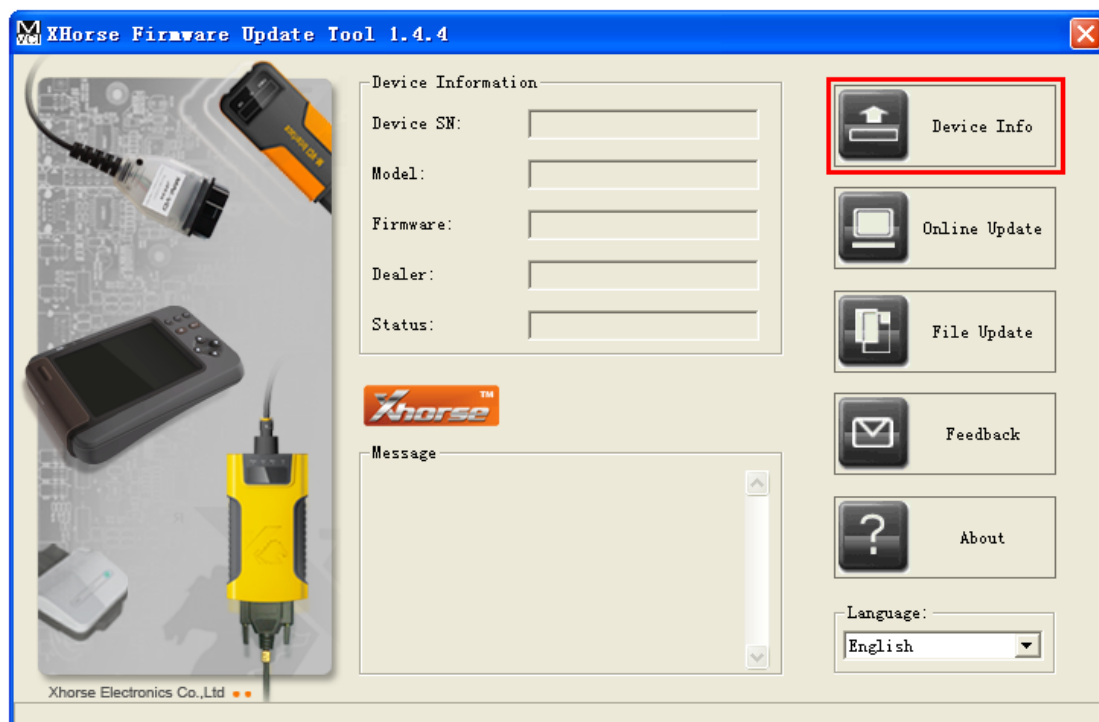
## 5) Click Finish to exit installation



## 5. MVCI Firmware Update Tool

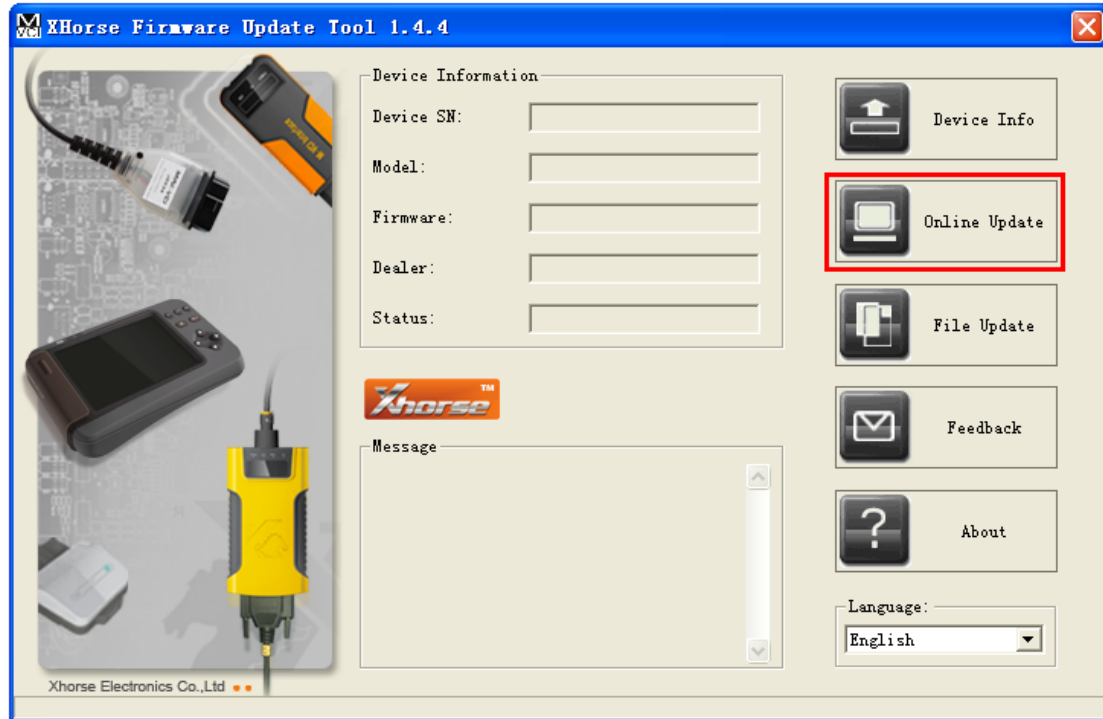
### 5.1. Device Information

Click **Device Info**

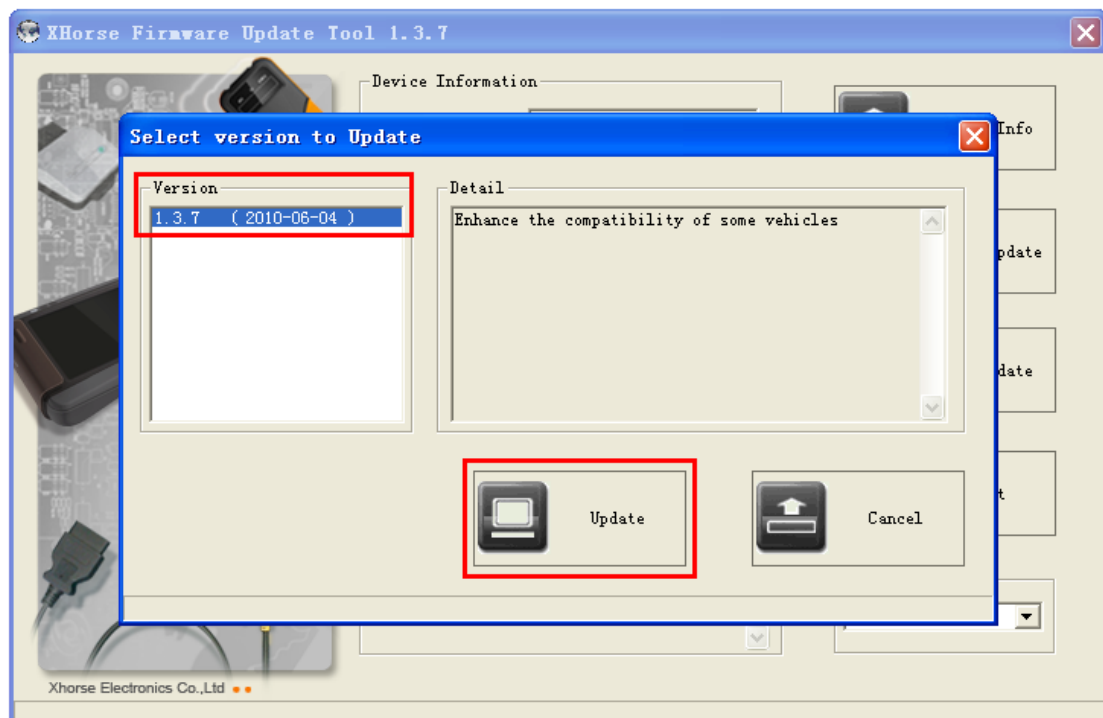


## 5.2. Firmware Update Online

Click **Online Update**

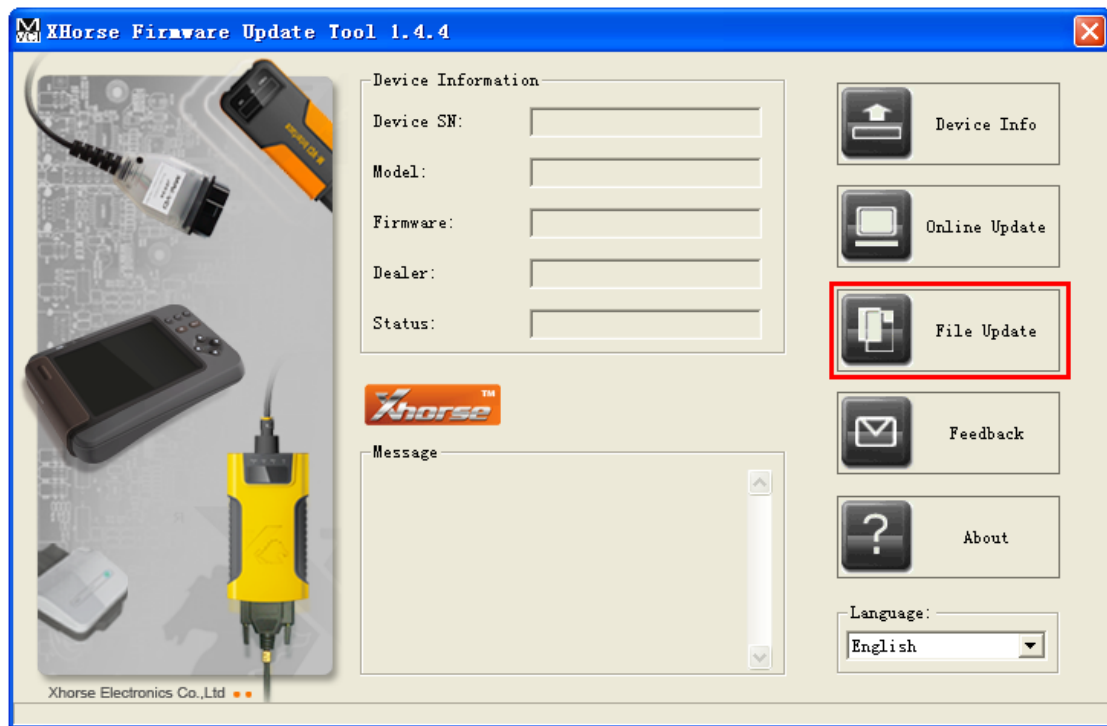


Select Version, then Click **Update**



### 5.3. Firmware Update from File

Click **File Update**



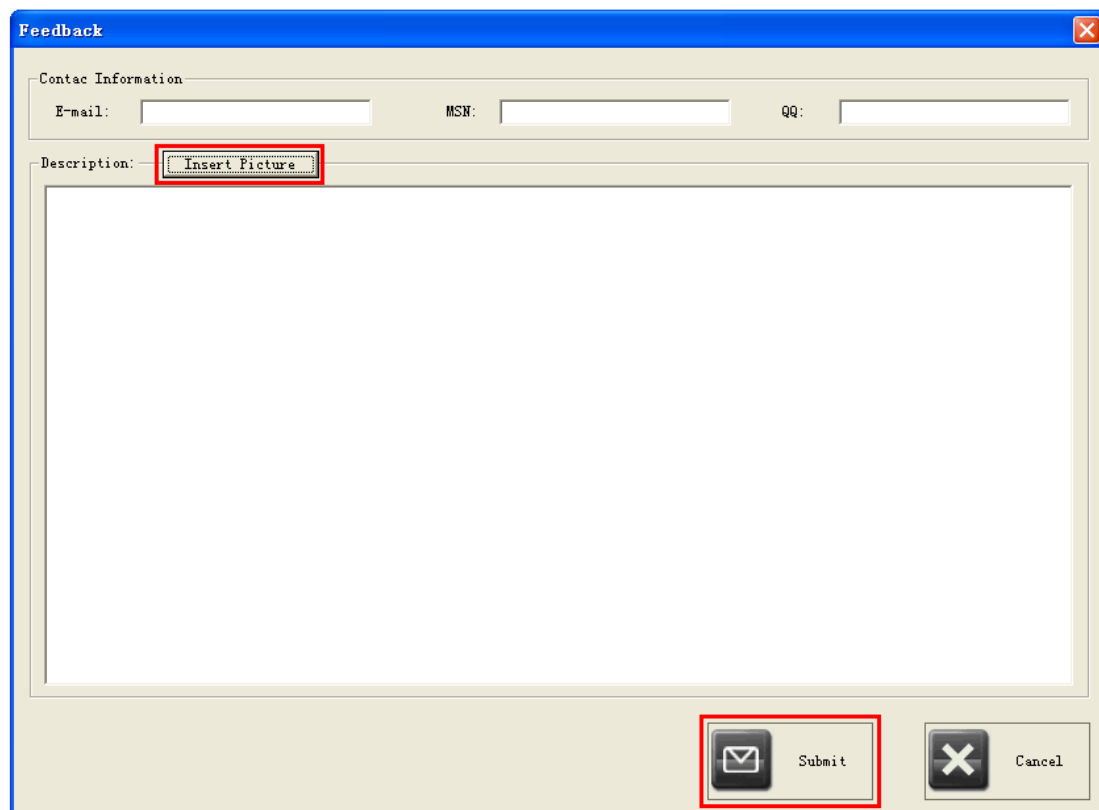
Please contact your dealer to get latest update file.

## 5.4. Feedback

Click **Feedback**

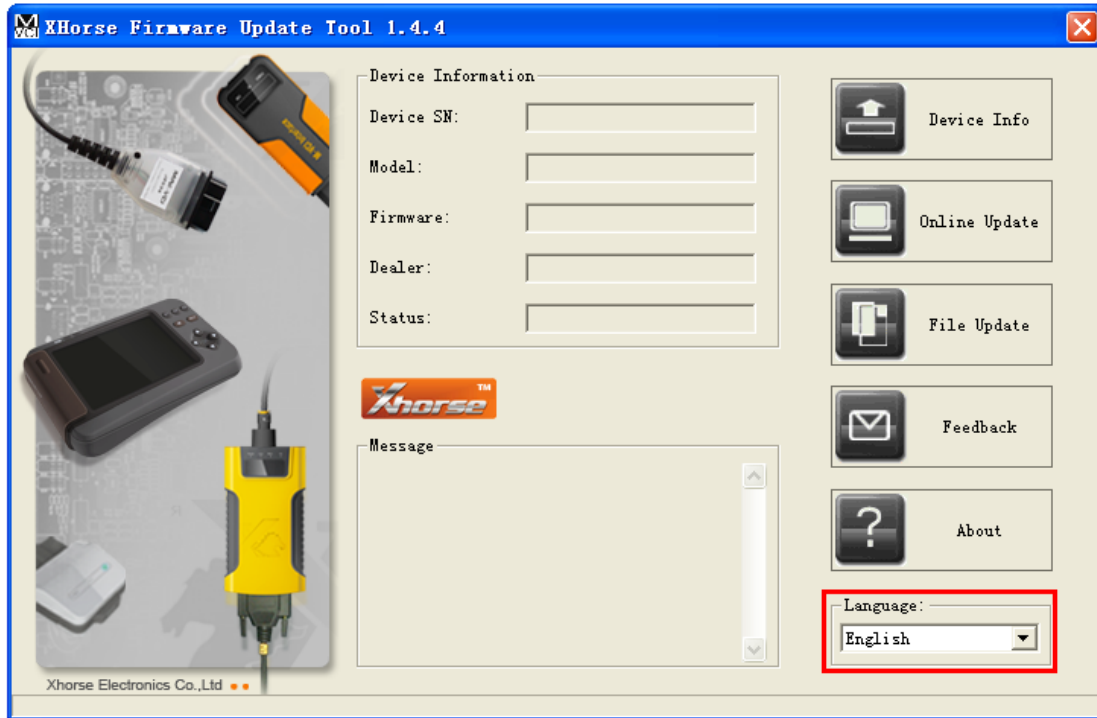


You can insert pictures to description. Click **Submit** when finish.



## 5.5. Language

Choose your preferred language.





## 6. Warranty and Service

### 6.1. Limited One Year Warranty

X-Horse warrants to its customers that this product will be free from all defects in materials and workmanship for a period of one(1) year from the date of the original purchase, subject to the following terms and conditions:

- This warranty does not apply to damages caused by improper use, accident, flood, lightning, or if the product was altered or repaired by anyone other than the Manufacturer's Service Center.
- X-Horse shall not be liable for any incidental or consequential damages arising from the use, misuse, or mounting of the tool. Some states do not allow limitations on how long an implied warranty lasts, so the above limitations may not apply to you.
- All information in this manual is based on the latest information available at the time of publication and no warranty can be made for its accuracy or completeness. X-Horse reserves the right to make changes at any time without notice.

### 6.2. Service Procedures

If you have any questions, please contact your distributor.

If it becomes necessary to return the tool for repair, contact your distributor for more information.