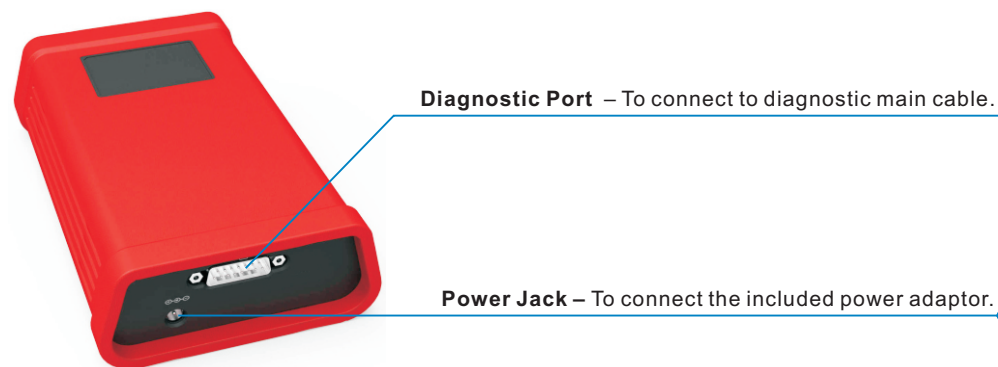
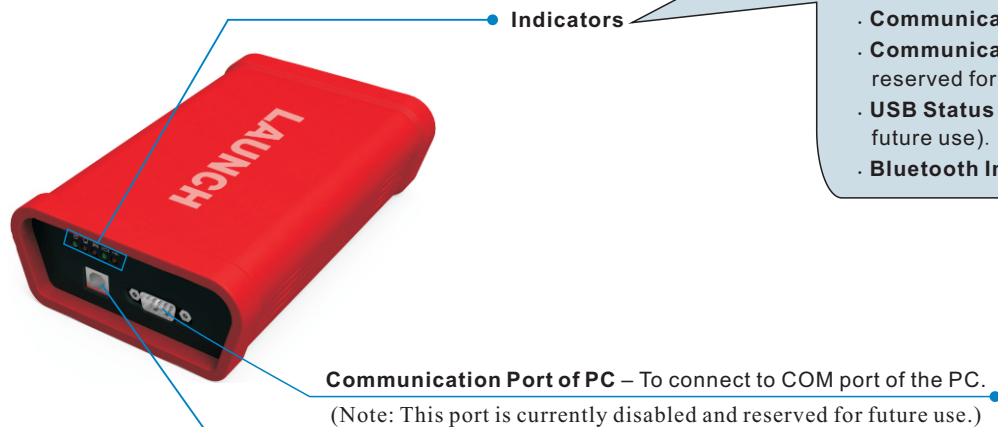


## X-431 HD Module

The indicators are defined as follows (from left to right):

- **Power Indicator:** It lights up when it is powered on.
- **Communication Indicator of Diagnostic Tool:** It illuminates when X-431 HD module is communicating with the diagnostic tool.
- **Communication Indicator of Vehicle:** It lights up once X-431 HD module is connected to a truck's DLC.
- **Communication Indicator of PC:** It lights up if X-431 HD module is connected to the COM port of a PC (Only reserved for future use).
- **USB Status Indicator:** It illuminates when the USB cable is plugged into X-431 HD module (Only reserved for future use).
- **Bluetooth Indicator:** It lights up if X-431 HD module is communicating with the vehicle's DLC.



### Technical Parameters

Working Voltage: 8~24V      Working Temperature: -15°C~60°C  
Storage Temperature: -20°C~70°C      Relative Temperature: 10%~80%

## 1 Vehicle Connections

1. Locate the DLC (Data Link Connector) of the truck. It is generally located in driver's cab. In case no DLC is found, please refer to the Repair Handbook of trucks.
2. Plug one end of the diagnostic main cable into DB15 connector and the other end into the truck's DLC. Normally the power indicator of X-431 HD module will light up.  
For trucks with non-16 pin DLC, please choose the corresponding diagnostic connector.



## 2 Download and Install X-431 HD Module App

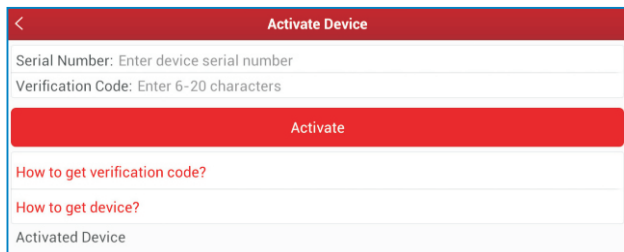
1. Visit the LAUNCH website and download the application corresponding to the X-431 HD module;  
Note: If downloading using the diagnostic tool, please be sure that Wi-Fi has good or strong signals. For details on Wi-Fi connection, refer to the user's manual of the diagnostic tool.
2. Follow the on-screen instructions to install it. Once installation is complete, an application icon will appear on the HOME screen.

## 3 Activate X-431 HD Module

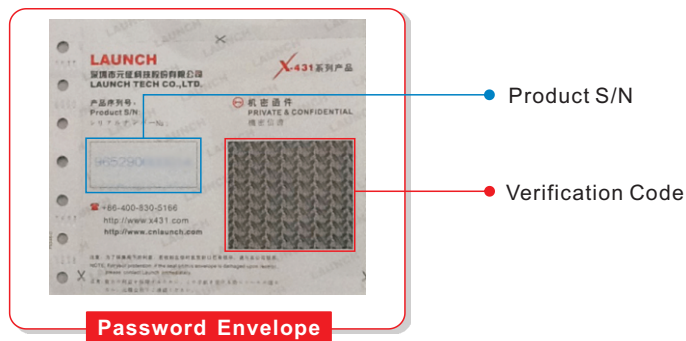
Follow the steps described below to activate X-431 HD module:

Note: Please make sure that your diagnostic tool is properly connected to the internet before proceed this step.

1. Launch the application you just installed, then tap --> "Profile" to enter, and then tap "Connector Activation" to go into a screen similar to the following:



2. Input the Product S/N and Verification Code (can be obtained from the included Password Envelope), then tap "Activate" to activate the X-431 HD module.



## 4 Bluetooth Settings

Before diagnosing a vehicle, you are suggested to make a Bluetooth pair between X-431 HD module and the diagnostic tool. Proceed as follows:

1. Enter Bluetooth setting screen ("Settings" --> "Bluetooth"), slide the Bluetooth switch to ON and will start searching all available Bluetooth devices.
2. Tap the desired one, then key in the PIN code (the default value is 0000) in the pop-up dialog box, and then tap "Pair".

By default, the Bluetooth name is 98454\*\*\*\*\*00 (where \*\*\*\*\* stands for 5 digits.).

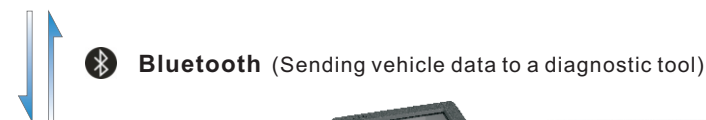
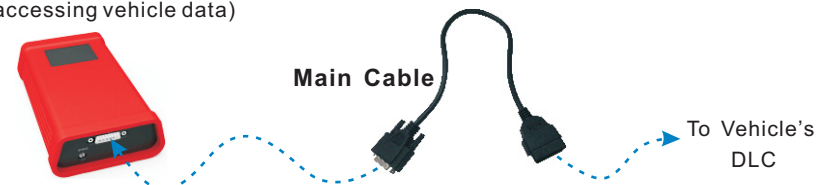
3. Once it is paired successfully, it will appear in the paired devices list.

Note: If no Bluetooth setting is done before diagnostic application is launched, you can also configure it while using the software.

## 5 How to Diagnose a Vehicle

**X-431 HD Module**  
(For accessing vehicle data)

**Vehicle Diagnosis Principle**

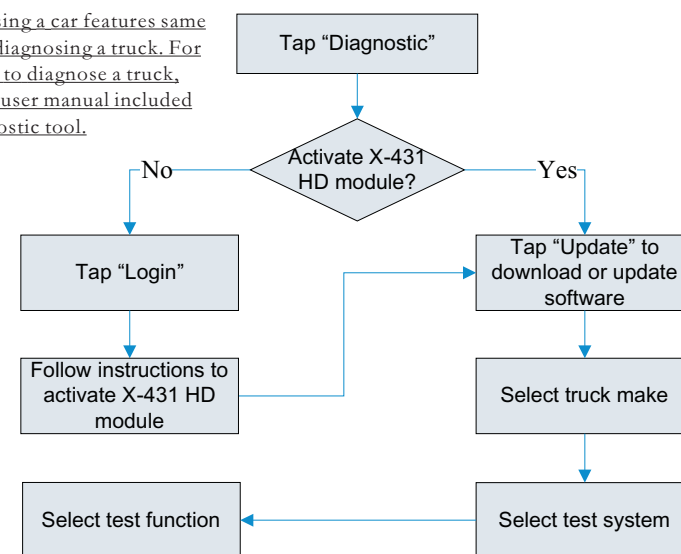


**Android-based Diagnostic Tool**  
(For analyzing collected vehicle data and displaying test results.)



### Vehicle Diagnosis Flowchart

Note: Diagnosing a car features same operations as diagnosing a truck. For details on how to diagnose a truck, please refer to user manual included with the diagnostic tool.



文档大小：原始文档为A4纸张（宽297mm x 高210mm），按照1:1输出

材质要求：157G双铜

印刷要求：彩色印刷