

T30 v57+sss39的使用 Installation manual  
for T30 version V57+SSS39

进入DISv57方法 how to enter DIS V57?

1插入t30硬盘到t30电脑 put T30 hard disk to  
IBM T30 laptop.

2开机一直等待【一定不要按任何】大概1-2分  
钟 Start the computer and waiting(do not  
press any button, just wait) wait 1-2 mins



Mark

F1.\*BMW DIS V57

F2. BMW SSS V39

ESC stops 10sec timer

ENTER boots default

F-keys boot OS

[98765432\_ ]

ESC stops 10sec timer

ENTER boots default

F-keys boot OS

[9876543210]

**SCO OpenServer(TM) Release 5**

**bootsmb: Init smb interface @ UniSoft GmbH 2002**

**86=(AH) SMBus Installation check: error**

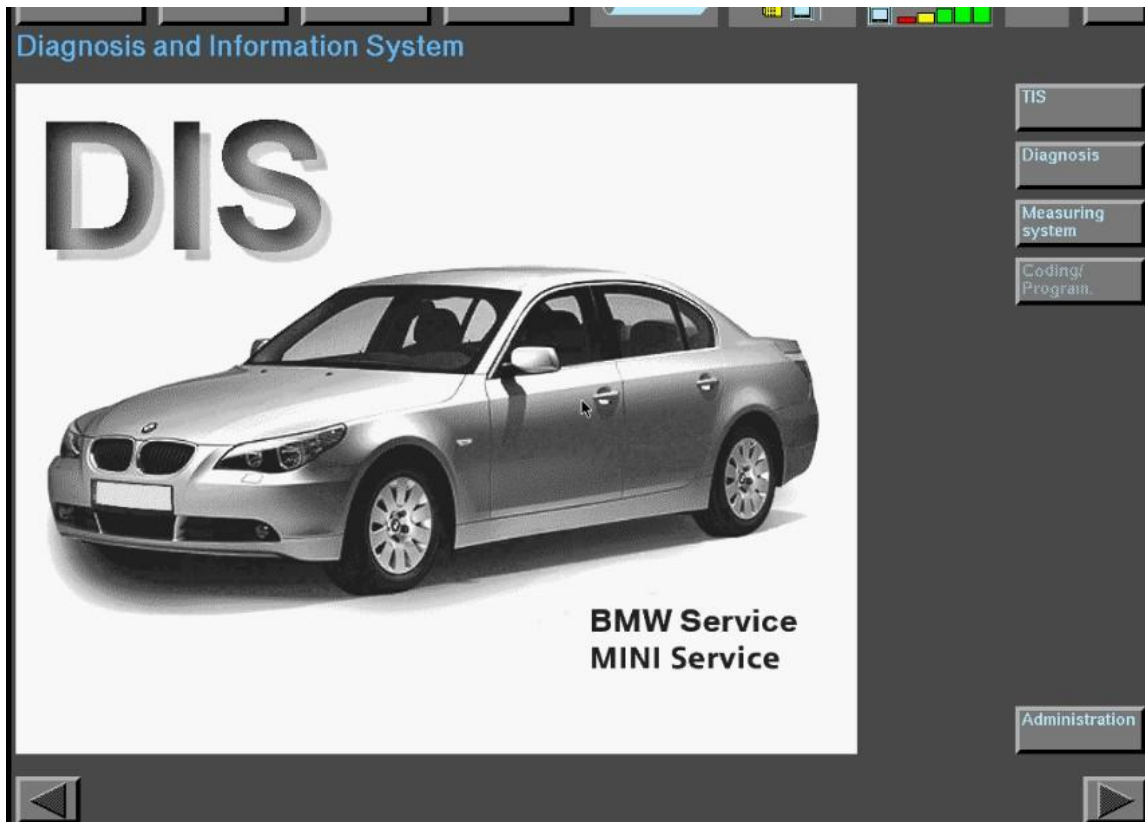
**Boot**

**:**

**hd(40)unix smb.enabled=1 swap=hd(41) dump=hd(41)**

**Sizing memory**

.....  
.....  
.....  
.....  
.....



直到出现这个界面----软件启动完成【开始诊断车】 Until you see this screen-that means software star completely(begin diagnose car)

SSS39编程软件的开启 SSS V39 coding software start

1开机启动软件 1. Star computer and open software

第一个画面

First screen



开机第二个画面时按下电脑的**F2**【大概**2秒**】  
When you see the second screen, press F2  
button on the laptop(about 2 seconds)

```
Mark  
F1.*BMW DIS V57  
F2. BMW SSS V39  
  
ESC stops 10sec timer  
ENTER boots default  
F-keys boot OS  
[9876      ]
```

这样的画面就进入了sss39 Then the computer will go to SSS39.



这就是sss39的版本 This is SSS V39 Version

A screenshot of a web interface showing an "SSS overview (total: 1)" table. The table has five columns: "Operating status", "Sessions current/max.", "Version Progman", "SSS name", and "IP address". The "Operating status" cell contains the word "usable" and is highlighted in green. The "Sessions" cell contains "0 / 5". The "Version" cell contains "39.0.0". The "SSS name" cell contains "SSSV39". The "IP address" cell contains "192.168.68.50".

Operating status	Sessions current/max.	Version Progman	SSS name	IP address
usable	0 / 5	39.0.0	SSSV39	192.168.68.50

这是sss39的语言 This is SSS39 language

deutsch	english(uk)	français	italiano	español	nederlands
svenska	japanese 日本語	english(usa)	thai ไทย	taiwanese 台語	chinese 汉语
korean 한국어	bahasa indonesia	russian русский	greek Ελληνικά	türkçe	português