

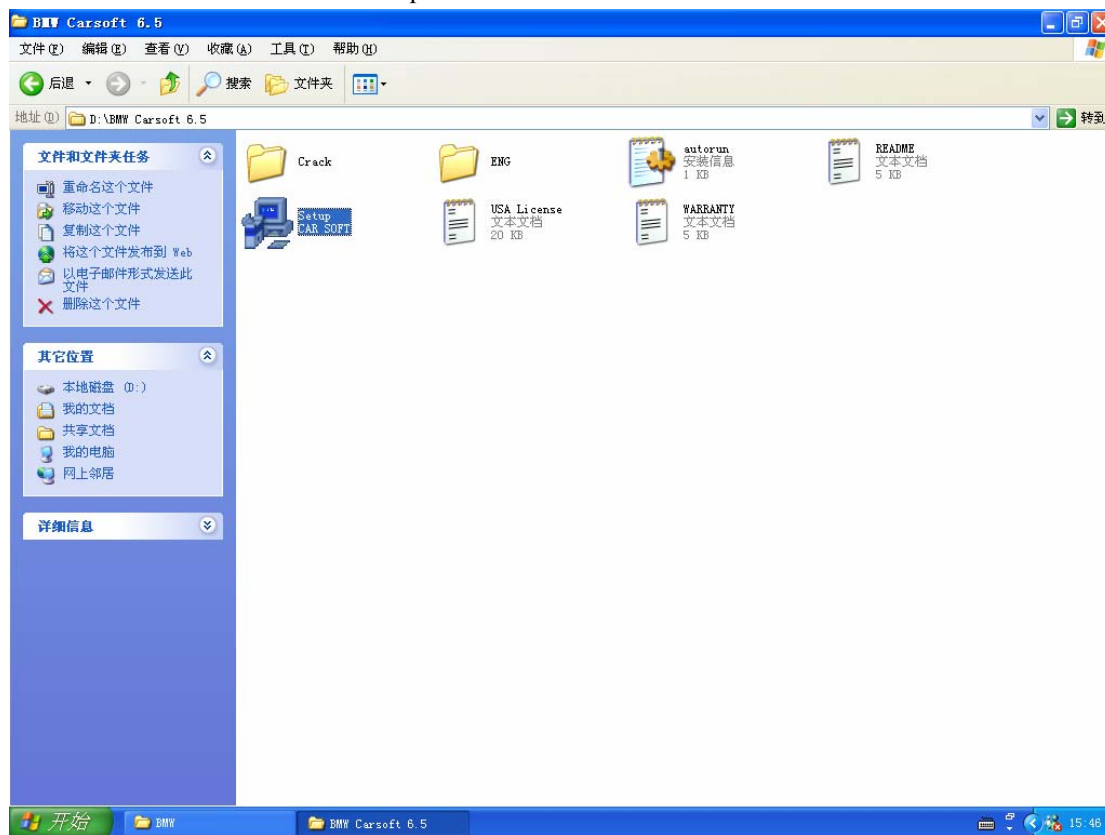
BMW Carsoft 6.5 Software Installation Instruction

Thanks for purchasing the BMW Carsoft 6.5 Car diagnostic device. Since the BMW Carsoft 6.5 software is cracked, so you need to carefully follow below software installation instruction for making sure the BMW Carsoft working properly.

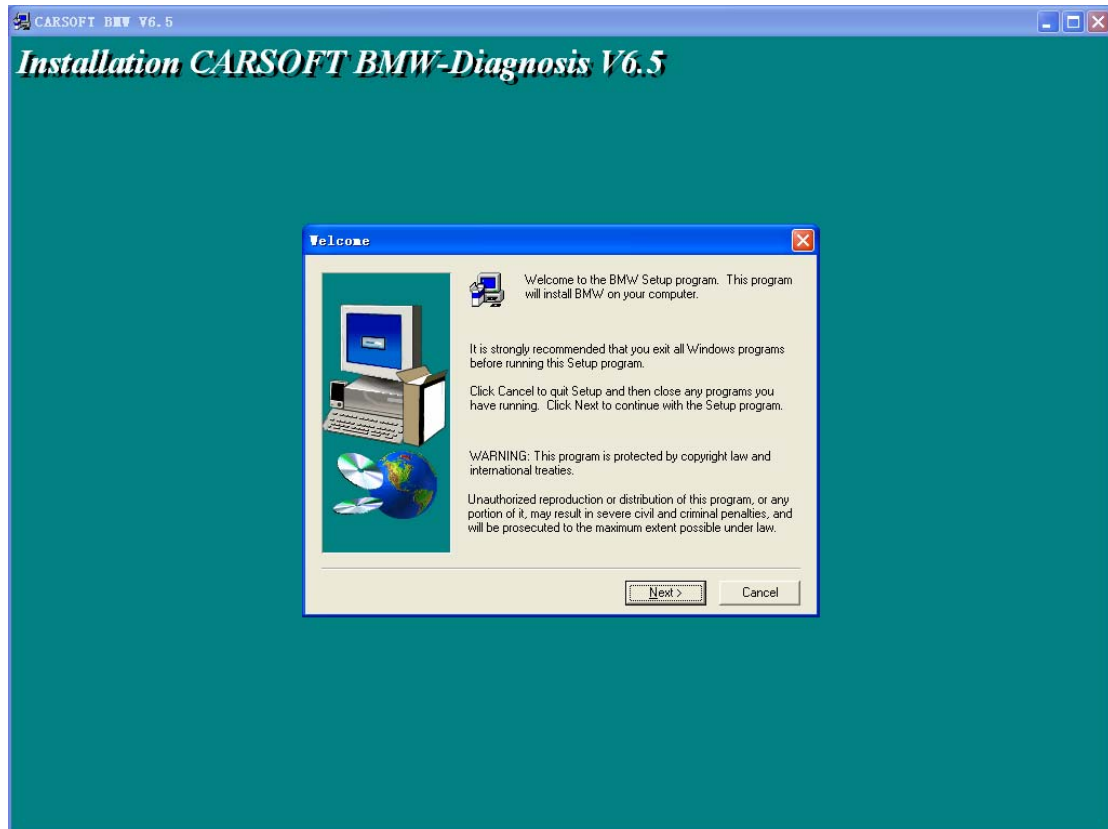
BMW Carsoft 6.5 Software Installation procedure:

Step 1: Copy the whole BMW Carsoft 6.5 File folder from the software driver CD to your hard-disk driver D or other hard driver. It is more stable and reliable to install the BMW Carsoft software from hard-disk directly.

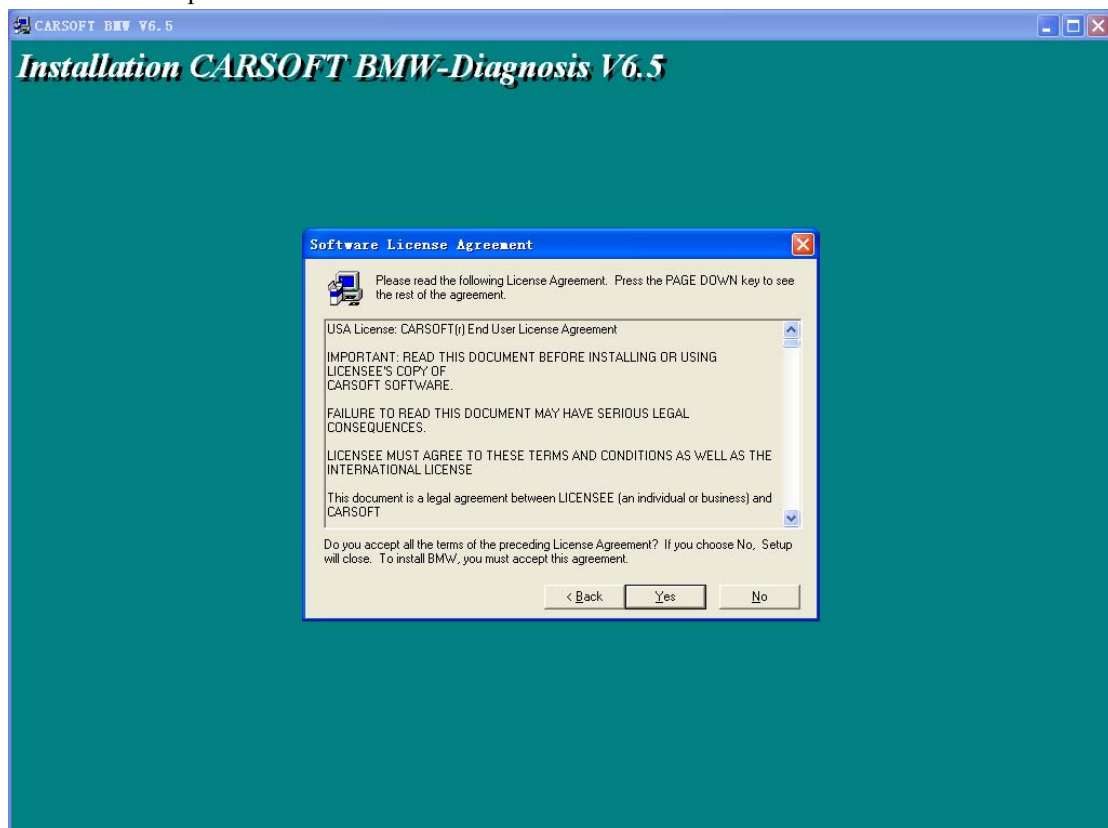
Step 2: In the hard-disk driver where you pasted the whole BMW Carsoft 6.5 software, please open the File folder of BMW Carsoft 6.5, then double click “SETUP CAR SOFT.exe” to run the BMW Carsoft software installation part 1.



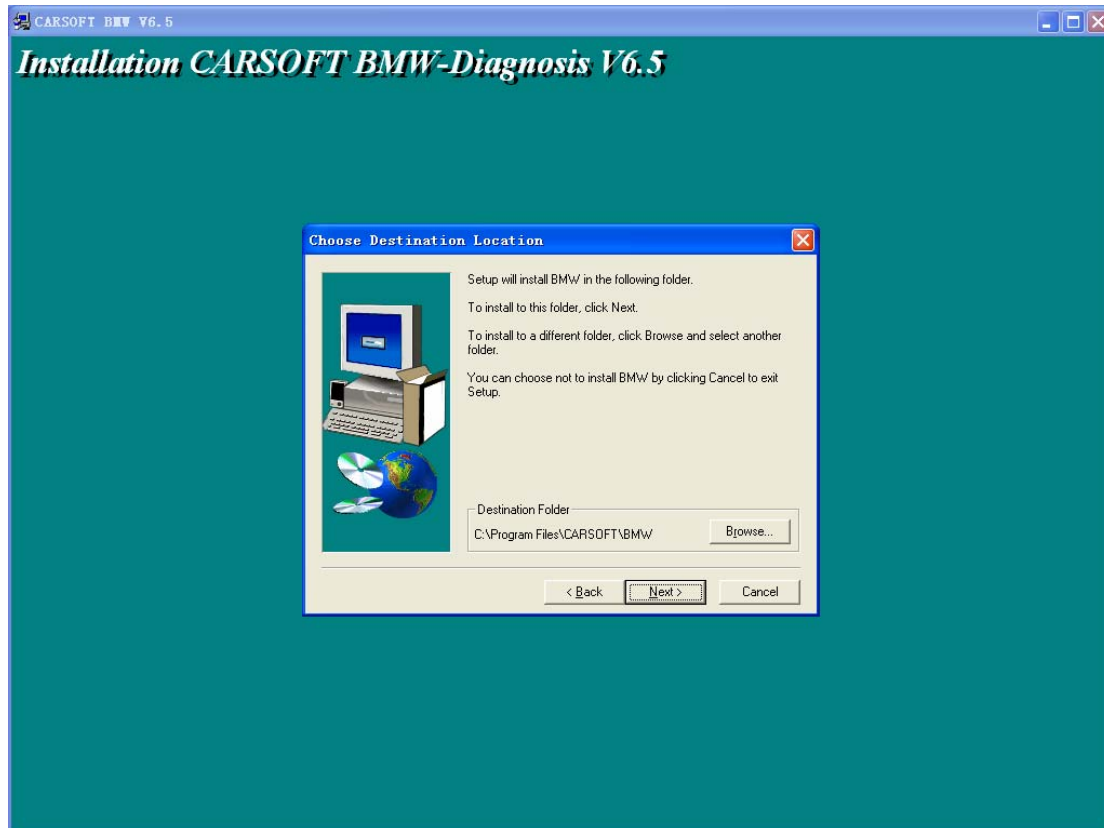
Step 3: The BMW Carsoft software installation proceeds automatically, click “Next” button for software installation when you see the BMW Carsoft 6.5 Welcome surface.



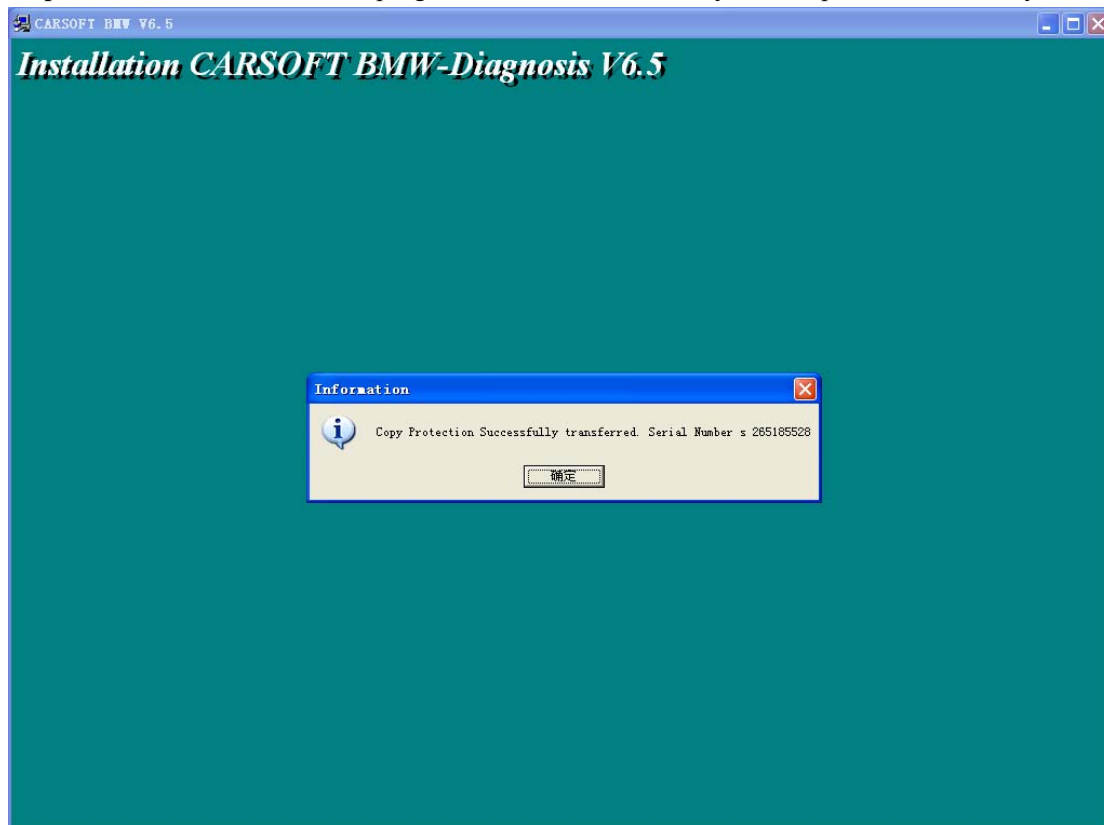
Step 4: The BMW Carsoft software installation asking about Software License Agreement, click "Yes" button to proceed the BMW Carsoft software installation.



Step 5: The BMW Carsoft software installation asking about directory in your hard-disk, you can change the directory or keep the default directory “C:\Program Files\CARSOFT\BMW as it is, then click “Next” button to proceed the BMW Carsoft 6.5 software installation.

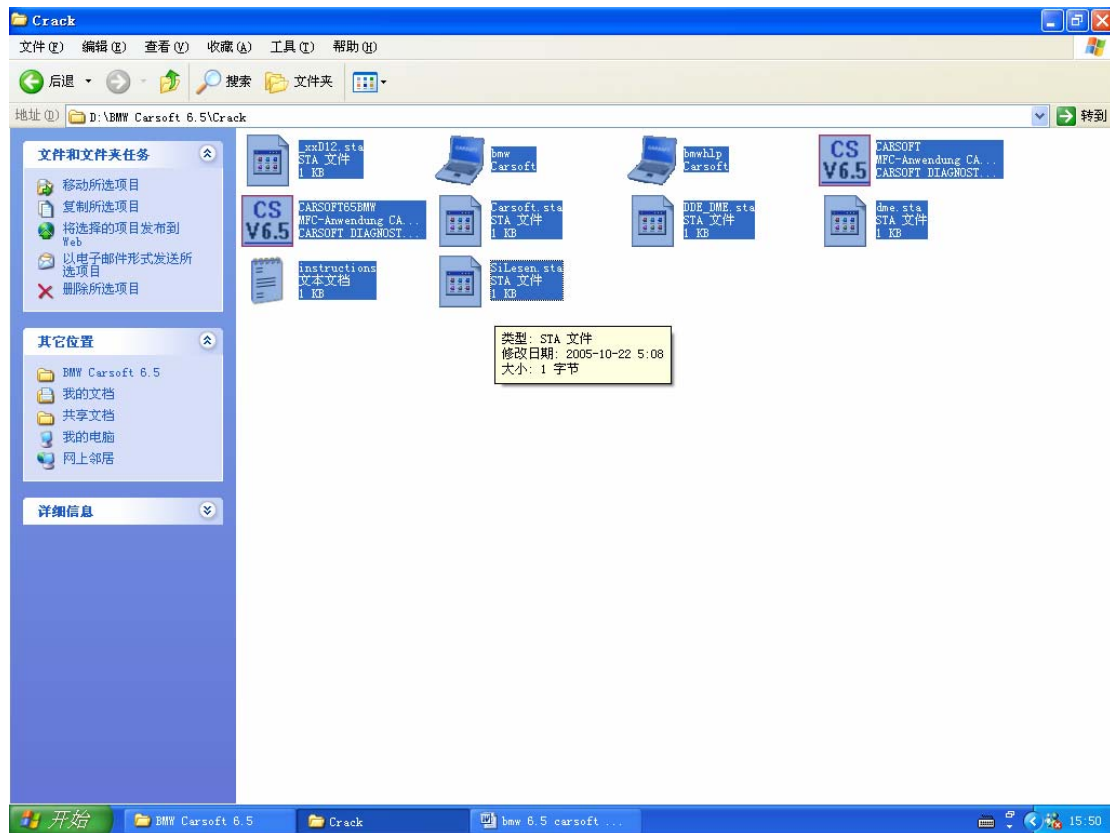


Step 6: The BMW Carsoft 6.5 program will be installed into your computer automatically..

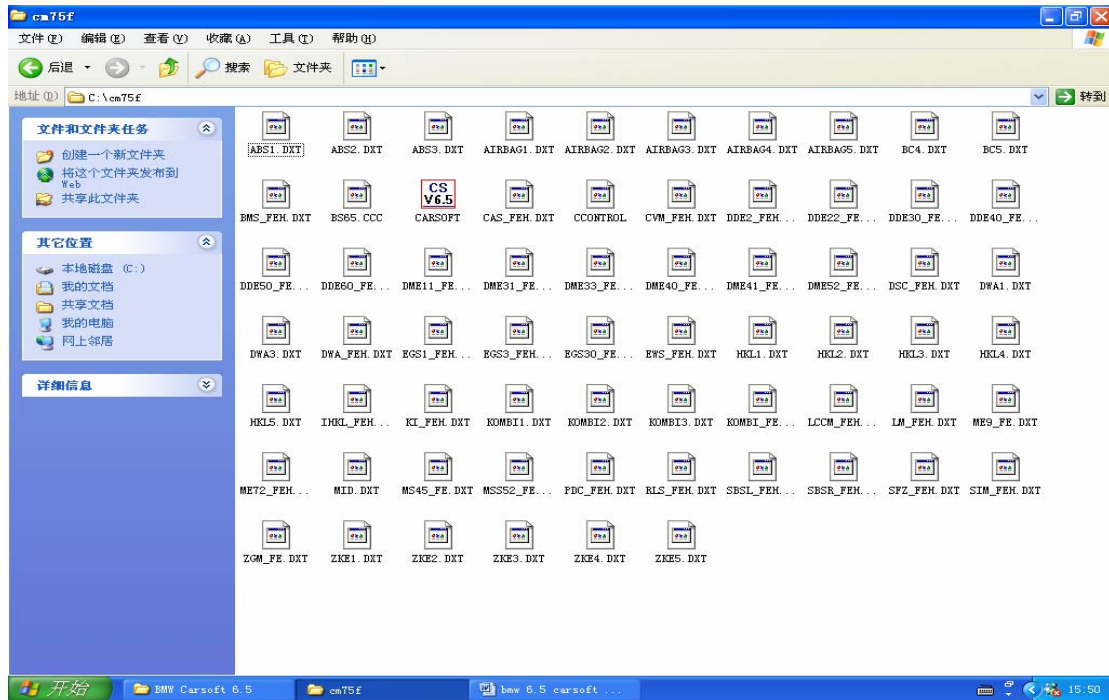


BMW Carsoft 6.5

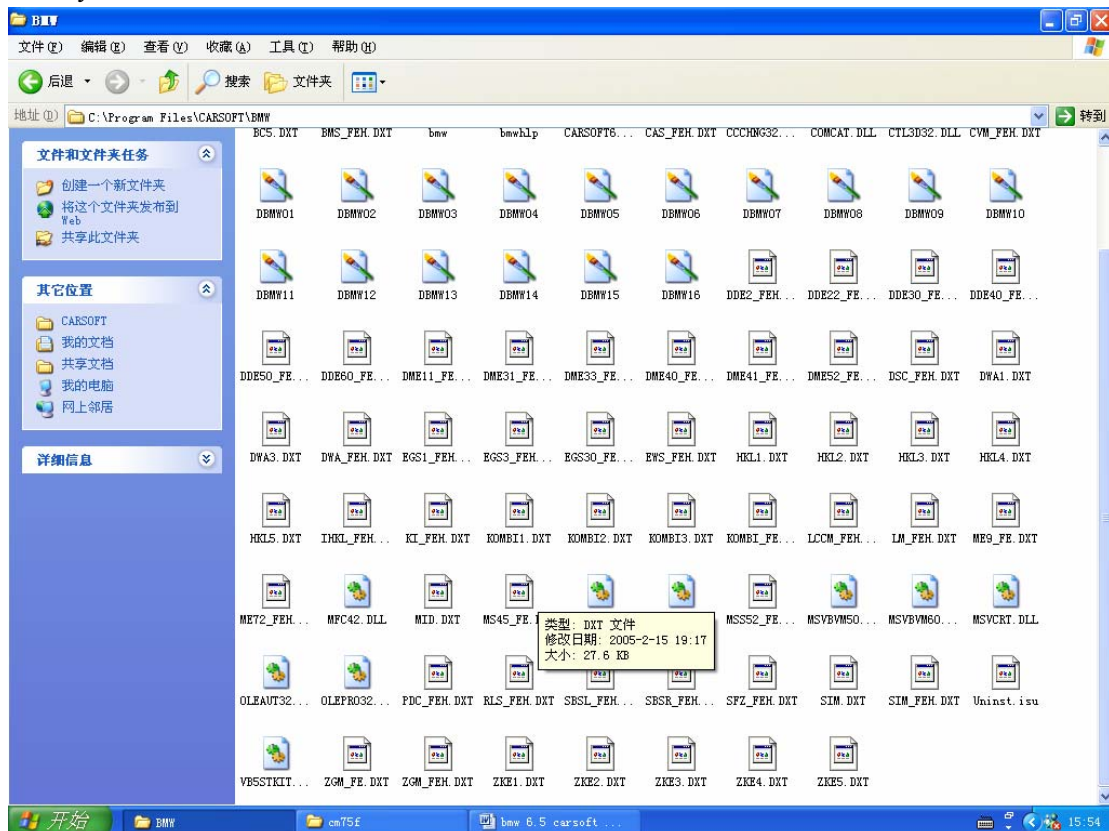
Step 8: In the hard-disk driver where you pasted the whole BMW Carsoft 6.5 software, please open the File folder of BMW Carsoft 6.5, then open the file holder of “crack”, copy all 10 files in this holder,



Step 9: Then paste all those 10 new files into the file holder of “cm75f” at directory C:\cm75f\ (this directory was created during the BMW Carsoft 6.5 software installation automatically). The system will ask you if you want to replace old file during pasting those 10 new files into the file holder “cm75f”, click “Yes all” button to replace all old files by those cracked 10 new files in “cm75f” file holder.



Step 10: Then paste all those 10 new files into the file holder of “BMW” at directory C:\Program Files\CARSOFT\BMW (this directory was created during the BMW Carsoft 6.5 software installation automatically). The system will ask you if you want to replace old file during pasting those 10 new files into the file holder “BMW”, click “Yes all” button to replace all old files by those cracked 10 new files in “BMW” file holder.

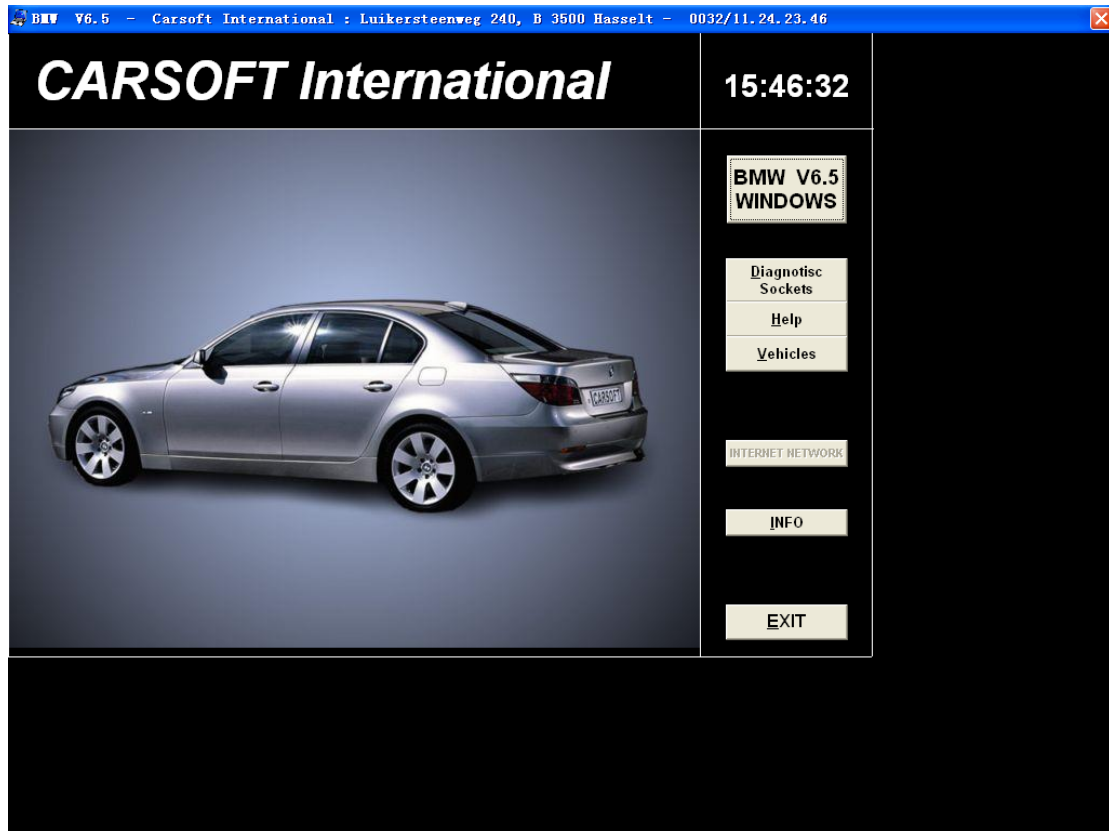


Step 11: Then you can run the BMW Carsoft 6.5 program now, click “Start” button at the left corner, select “Programs” menu, then select “CARSOFT” holder, click “BMW” to run the BMW Carsoft 6.5 program.

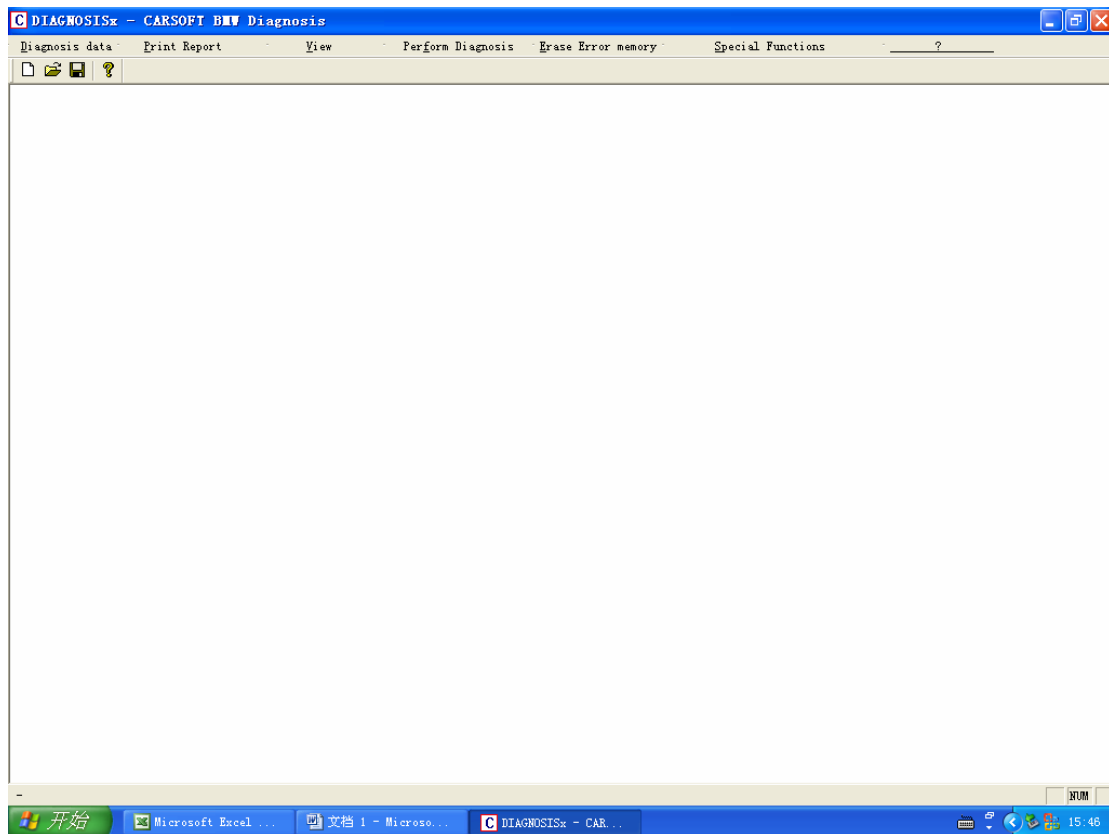


Step 12: Then you can see the BMW Carsoft Diagnostic program surface, click “BMW V6.5 WINDOWS” button to go ahead the BMW Carsoft 6.5 program.

BMW Carsoft 6.5



Step 13: Then you can apply full functions of BMW Carsoft 6.5 Diagnostic program with the hardware together.



--- End ---